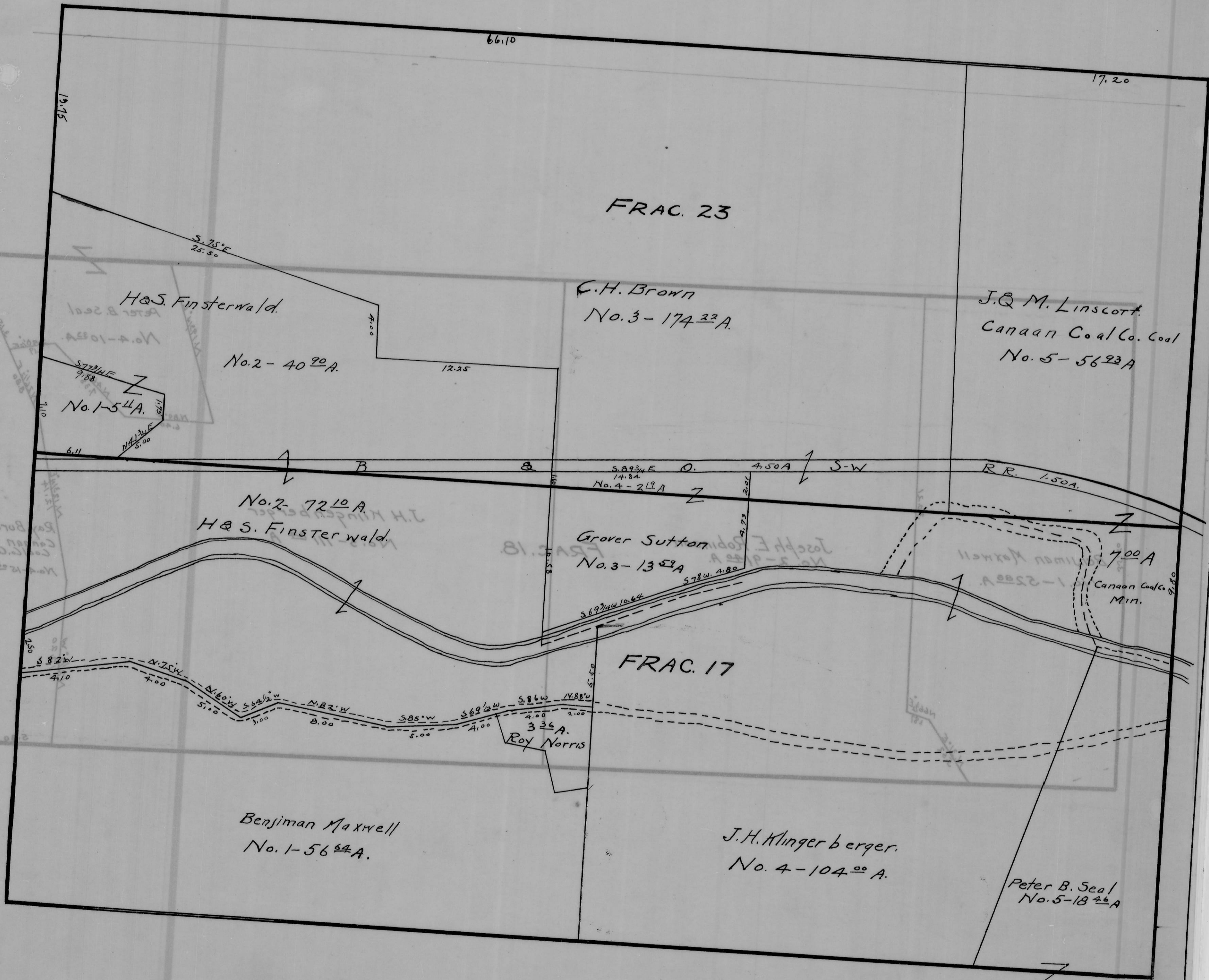


CANAAN TWP, - SEC. 22 - TOWN, 5 - RANGE, 13.  
SCALE 20 RODS TO INCH.



66.10

17.20

FRAC. 23

H&S. Finsterwald

C.H. Brown

J.Q.M. Linscott

No. 2 - 40<sup>90</sup>A.

No. 3 - 174<sup>22</sup>A.

Canaan Coal Co. Coal

No. 1 - 54<sup>4</sup>A.

No. 5 - 56<sup>23</sup>A.

12.25

No. 4 - 21<sup>11</sup>A.

R.R. 1.50A.

No. 2 - 72<sup>10</sup>A.  
H&S. Finsterwald

Grover Sutton  
No. 3 - 13<sup>52</sup>A.

7<sup>00</sup>A.

FRAC. 17

3<sup>36</sup>A.  
Roy Norris

Benjamin Maxwell  
No. 1 - 56<sup>54</sup>A.

J.H. Mingerberger  
No. 4 - 104<sup>00</sup>A.

Peter B. Seal  
No. 5 - 18<sup>26</sup>A.

See FRAC. 18