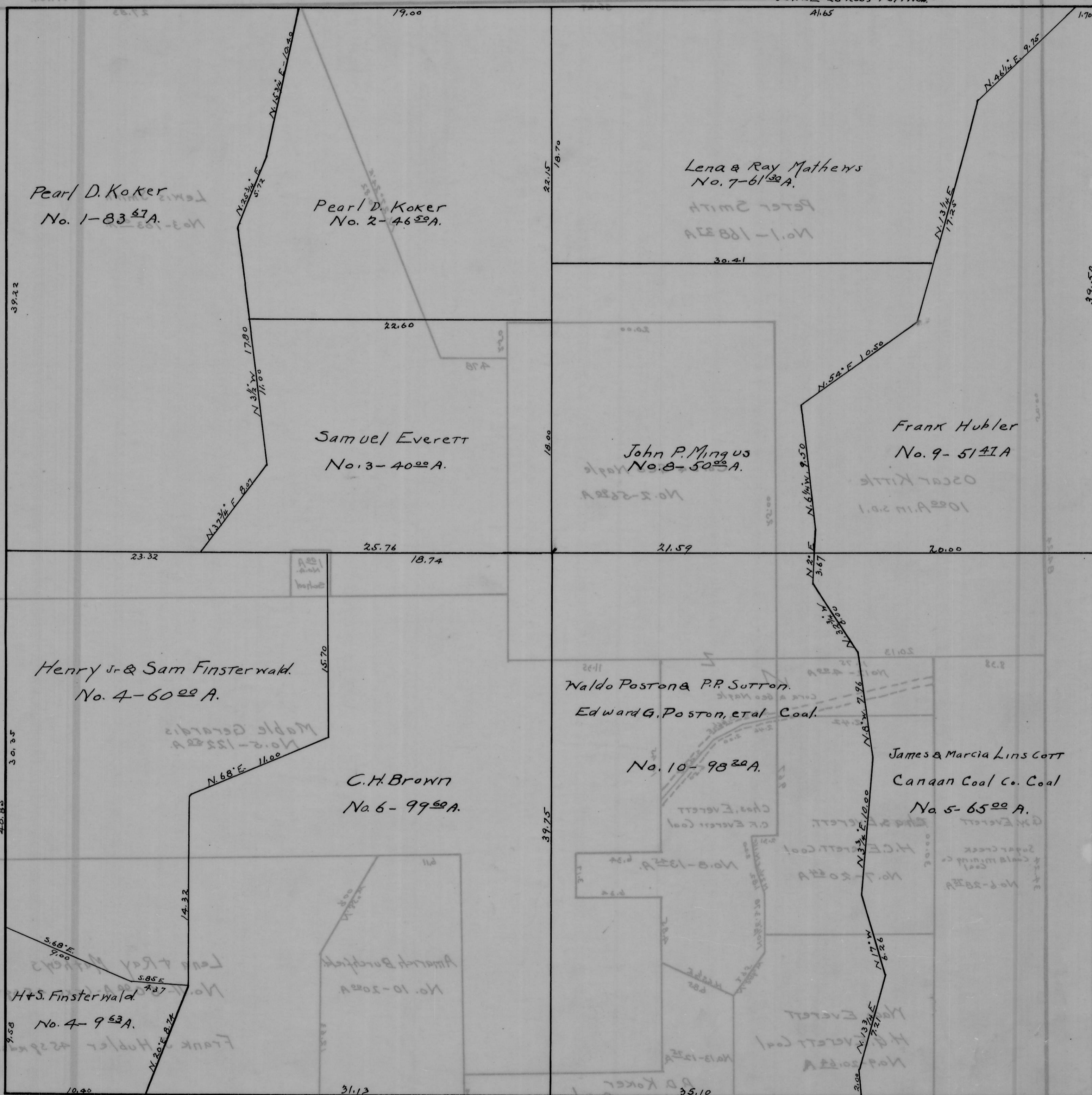


# CANAAN TWP. - SEC. 23 - TOWN, 5 - RANGE, 13.

SCALE 20 FEET TO 1 INCH



Pearl D. Koker  
No. 1-83.67A.

Pearl D. Koker  
No. 2-46.50A.

Lena & Ray Mathews  
No. 7-61.30A.

Samuel Everett  
No. 3-40.00A.

John P. Mings  
No. 8-50.00A.

Frank Hubler  
No. 9-51.41A.

Henry Jr. & Sam Finsterwald  
No. 4-60.00A.

C.H. Brown  
No. 6-99.00A.

Waldo Poston & P.R. Sutton.  
Edward G. Poston, et al. Coal.

No. 10-98.30A.

James & Marcia Linscott  
Canaan Coal Co. Coal  
No. 5-65.00A.

H & S. Finsterwald  
No. 4-9.53A.

