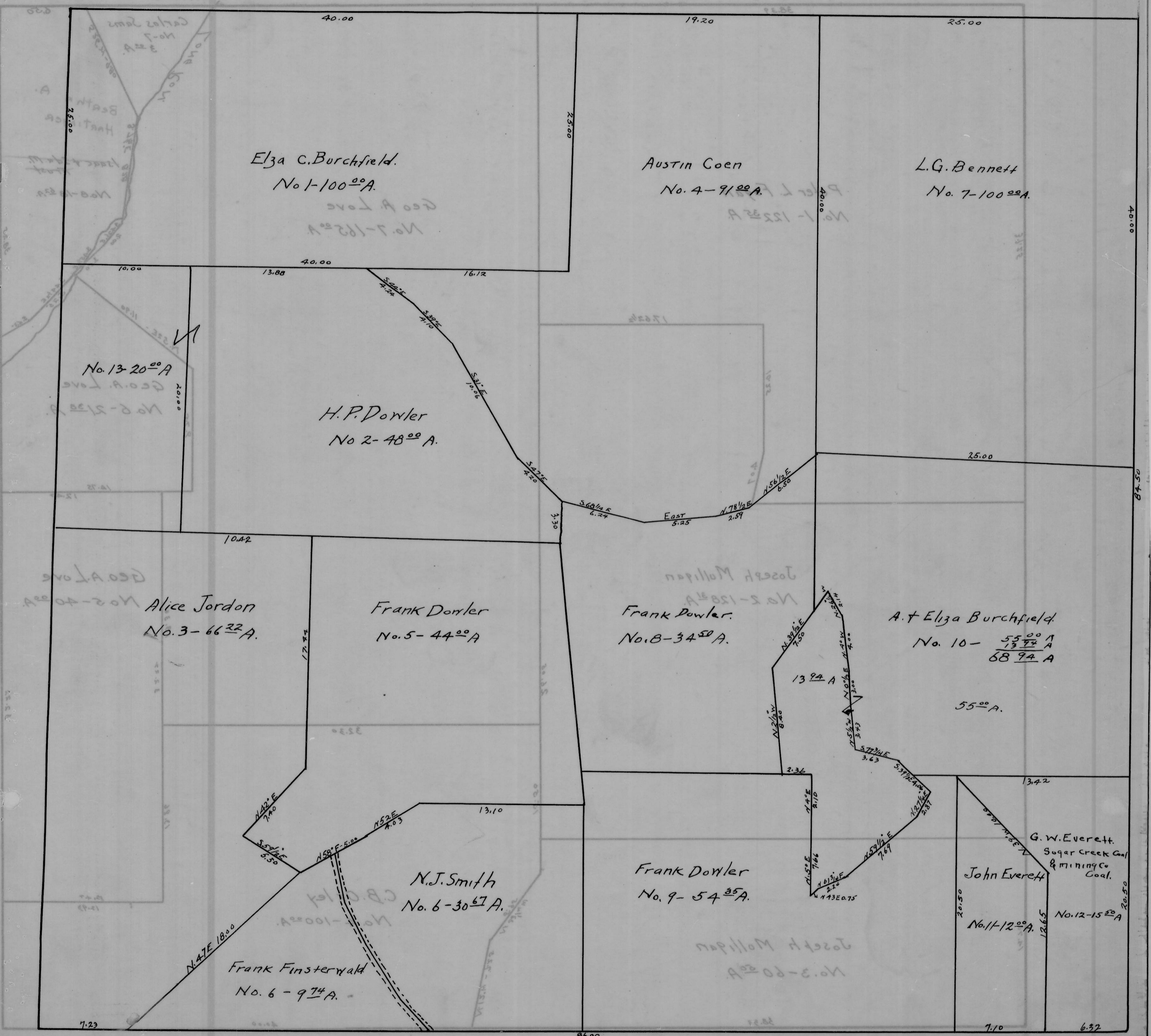


CANAAN TWP - SEC. 30 - TOWN, 5 - RANGE, 13.

SCALE 20 FEET TO 1 INCH.



Elza C. Burchfield.  
No. 1-100<sup>00</sup> A.

Austin Coen  
No. 4-91<sup>00</sup> A.

L.G. Bennett  
No. 7-100<sup>00</sup> A.

No. 13-20<sup>00</sup> A

H.P. Dowler  
No. 2-48<sup>00</sup> A.

Alice Jordan  
No. 3-66<sup>22</sup> A.

Frank Dowler  
No. 5-44<sup>00</sup> A.

Frank Dowler.  
No. 8-34<sup>50</sup> A.

A. + Eliza Burchfield.  
No. 10-  $\frac{55\ 00\ A}{13\ 72\ A}$   
68 94 A

N.J. Smith  
No. 6-30<sup>67</sup> A.

Frank Finsterwald  
No. 6-9<sup>74</sup> A.

Frank Dowler  
No. 9-54<sup>35</sup> A.

John Everett  
No. 11-12<sup>00</sup> A.

G.W. Everett  
Sugar Creek Coal  
& Mining Co.  
Coal.

No. 12-15<sup>00</sup> A