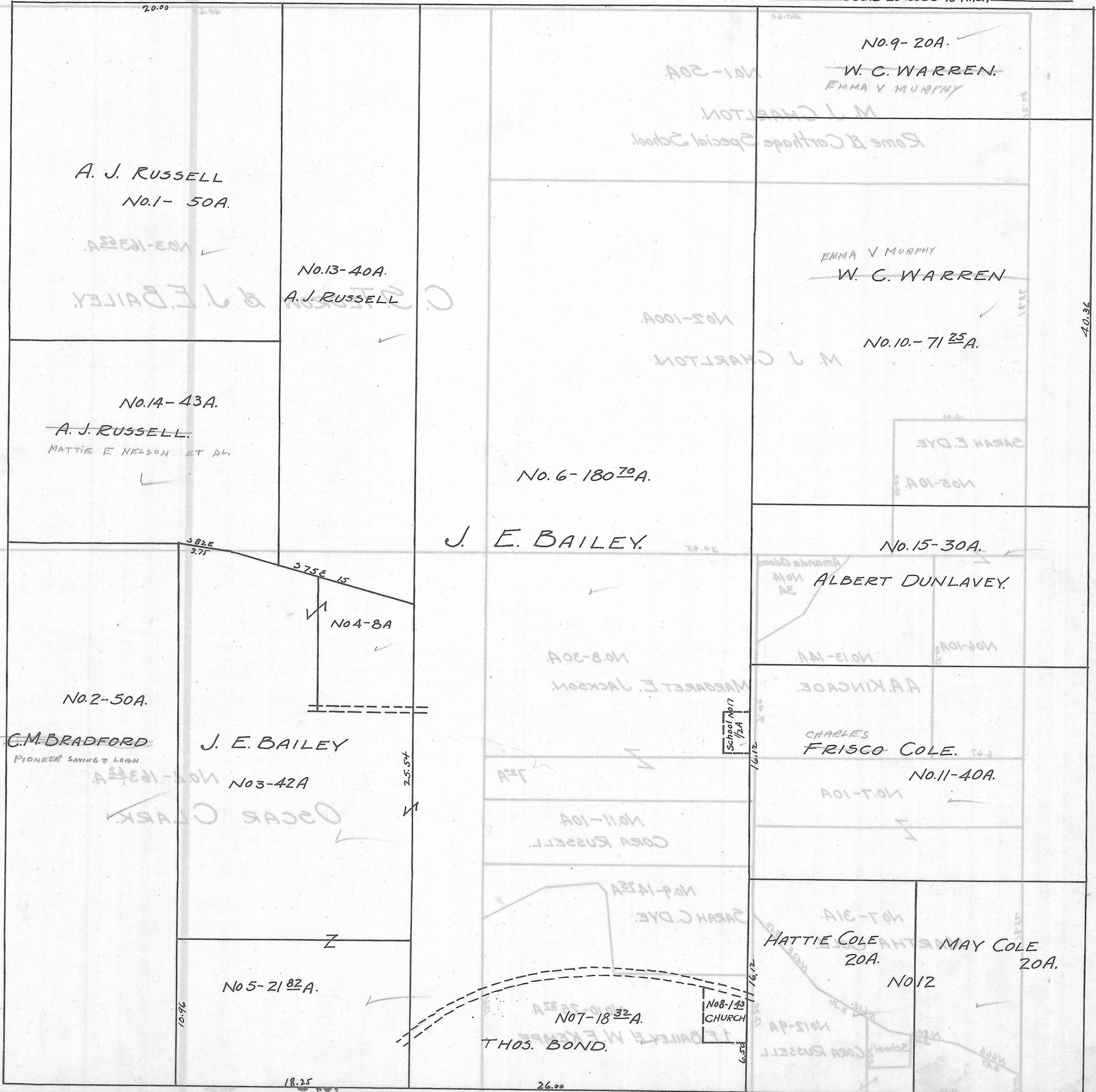


CARTHAGE TWP. SEC. 5 TOWN 5 RANGE 12.

Scale 20 Rods To 1 Inch



A. J. RUSSELL  
No. 1-50A.

No. 13-40A.  
A. J. RUSSELL

No. 9-20A.  
W. C. WARREN.  
EMMA V MURPHY

EMMA V MURPHY  
W. C. WARREN

No. 10-71<sup>25</sup>A.

No. 14-43A.  
A. J. RUSSELL.  
MATTIE E NELSON ET AL.

No. 6-180<sup>70</sup>A.

J. E. BAILEY.

No. 15-30A.  
ALBERT DUNLAVEY.

No. 2-50A.  
C. M. BRADFORD  
PIONEER SAVING & LOAN

J. E. BAILEY  
No. 3-42A

CHARLES  
FRISCO COLE.  
No. 11-40A.

No. 5-21<sup>82</sup>A.

No. 7-18<sup>32</sup>A.  
THOS. BOND.

HATTIE COLE  
20A.

MAY COLE  
20A.

No. 12

School No. 17  
1/2 A

No. 8-14<sup>43</sup>  
CHURCH

20.00

26.01

18.25

26.00

40.36

16.12

16.12

6.50