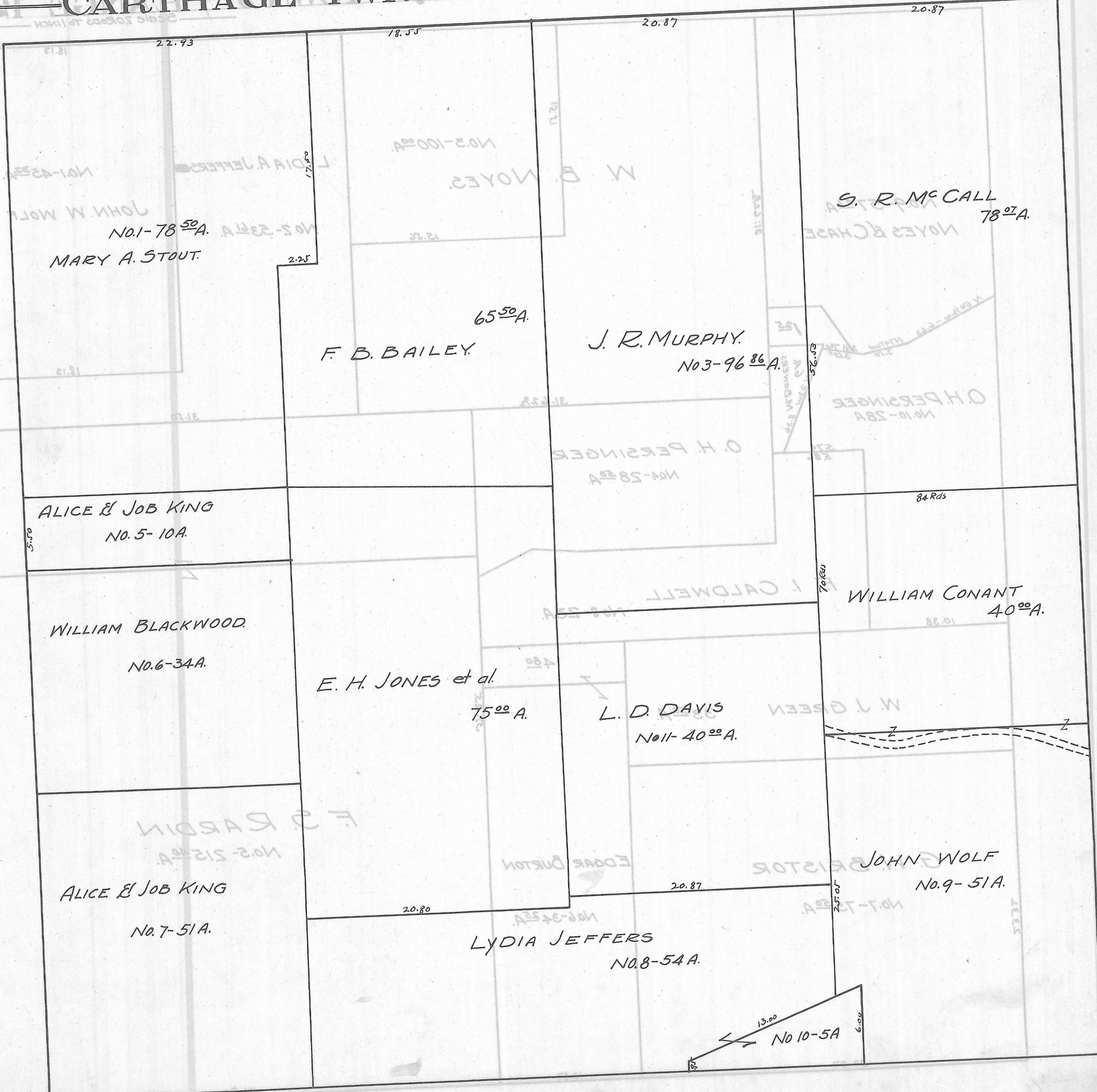


CARTHAGE TWP. — SEC. 8 — TOWN 5 — RANGE 12.

Scale 20 Rods To 1 INCH



NO. 1-78<sup>50</sup>A.  
MARY A. STOUT.

65<sup>50</sup>A.  
F. B. BAILEY.

J. R. MURPHY.  
NO. 3-96<sup>86</sup>A.

S. R. Mc CALL  
78<sup>00</sup>A.

ALICE & JOB KING  
NO. 5-10A.

WILLIAM BLACKWOOD.  
NO. 6-34A.

E. H. JONES et al.  
75<sup>00</sup>A.

L. D. DAVIS  
NO. 11-40<sup>00</sup>A.

WILLIAM CONANT  
40<sup>00</sup>A.

ALICE & JOB KING  
NO. 7-51A.

LYDIA JEFFERS  
NO. 8-54A.

JOHN WOLF  
NO. 9-51A.

13.00  
6.00  
No 10-5A