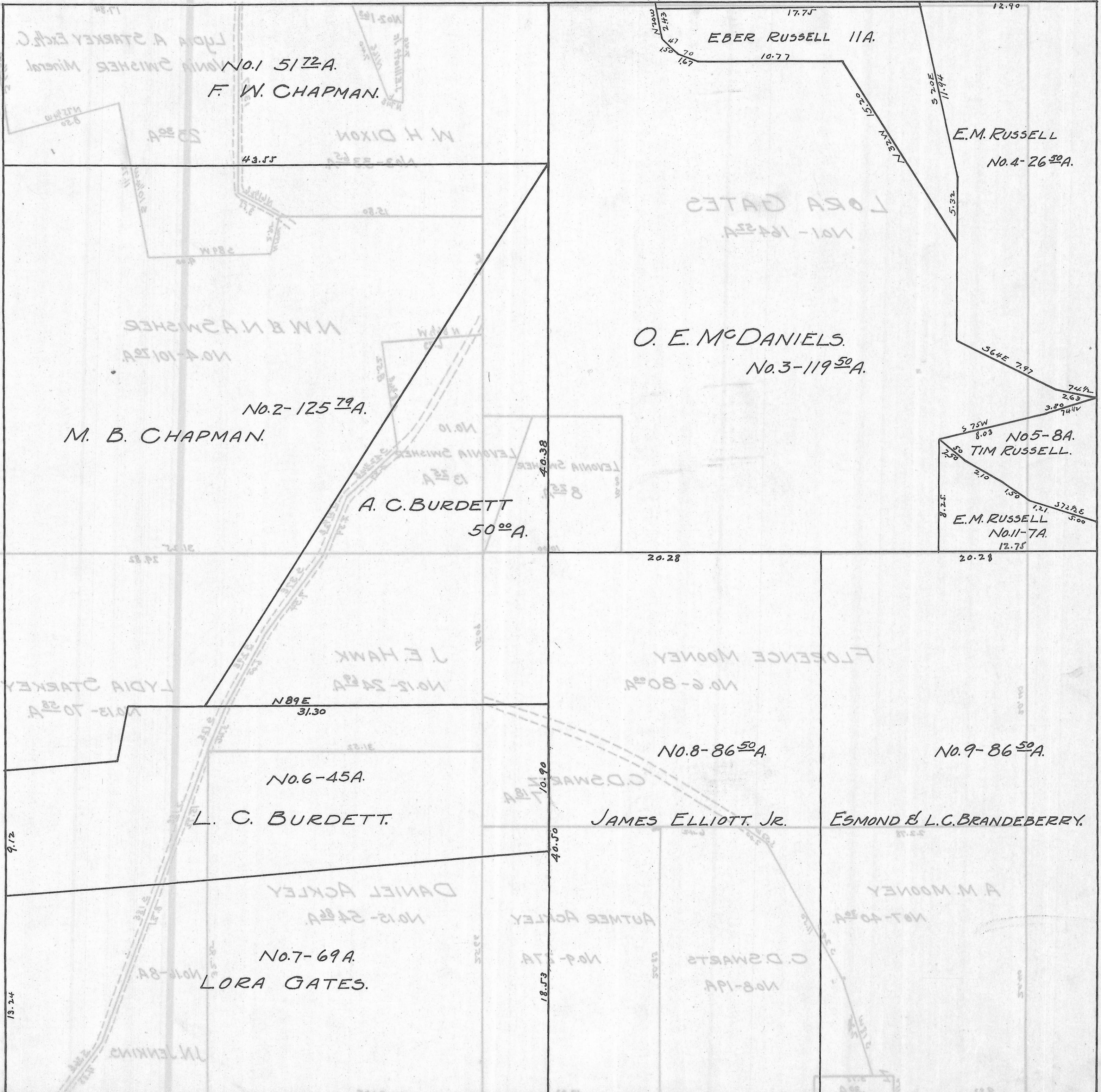


CARTHAGE TWP. — SEC. 17 — TOWN 5 — RANGE 12.

Scale 20 Rods To 1 INCH.



No. 1 51<sup>72</sup>A.  
F. W. CHAPMAN.

No. 2-125<sup>79</sup>A.  
M. B. CHAPMAN.

A. C. BURDETT  
50<sup>00</sup>A.

No. 6-45A.  
L. C. BURDETT.

No. 7-69A.  
LORA GATES.

EBER RUSSELL 11A.

E.M. RUSSELL  
No. 4-26<sup>50</sup>A.

O. E. MCDANIELS.  
No. 3-119<sup>50</sup>A.

No. 5-8A.  
TIM RUSSELL.

E.M. RUSSELL  
No. 11-7A.

No. 8-86<sup>50</sup>A.

JAMES ELLIOTT, JR.

No. 9-86<sup>50</sup>A.

ESMOND & L.C. BRANDEBERRY.

Dye & Russell-.66A.