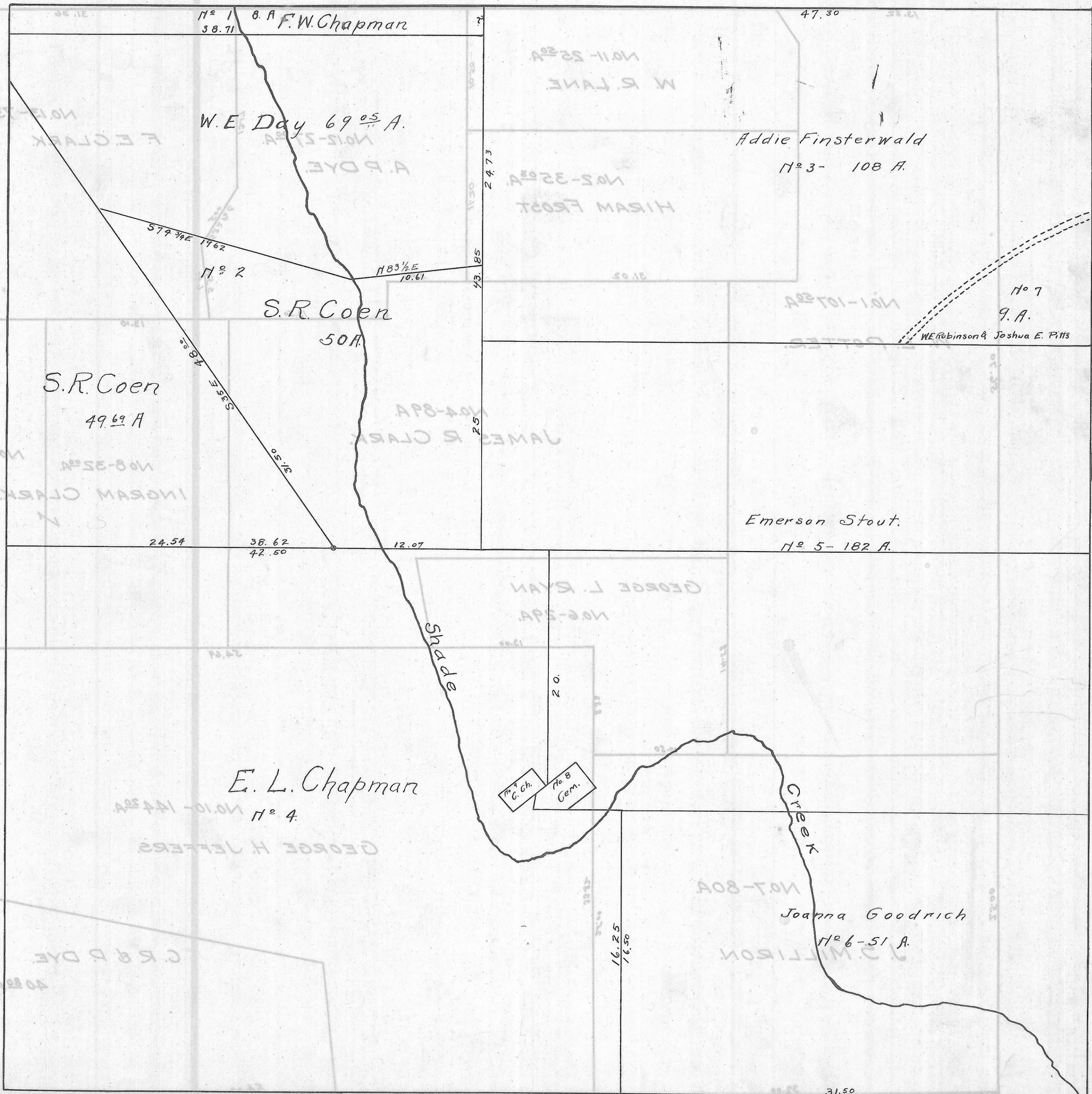


CARTHAGE TWP., - SEC. 19. - TOWN, 5 - RANGE, 12. SCALE 20 RODS = 1 IN.



N^o 1
38.71
8 A F.W. Chapman

W.E. Day 69⁰⁵ A.

Addie Finsterwald
N^o 3- 108 A.

N^o 2
S.R. Coen
50 A.

S.R. Coen
49.69 A

Emerson Stout.
N^o 5- 182 A.

E.L. Chapman
N^o 4.

Joanna Goodrich
N^o 6- 51 A.

Shades
Creek

No. 7
G.A.

No. 3
C. Ch.

No. 8
Gem.

31.50