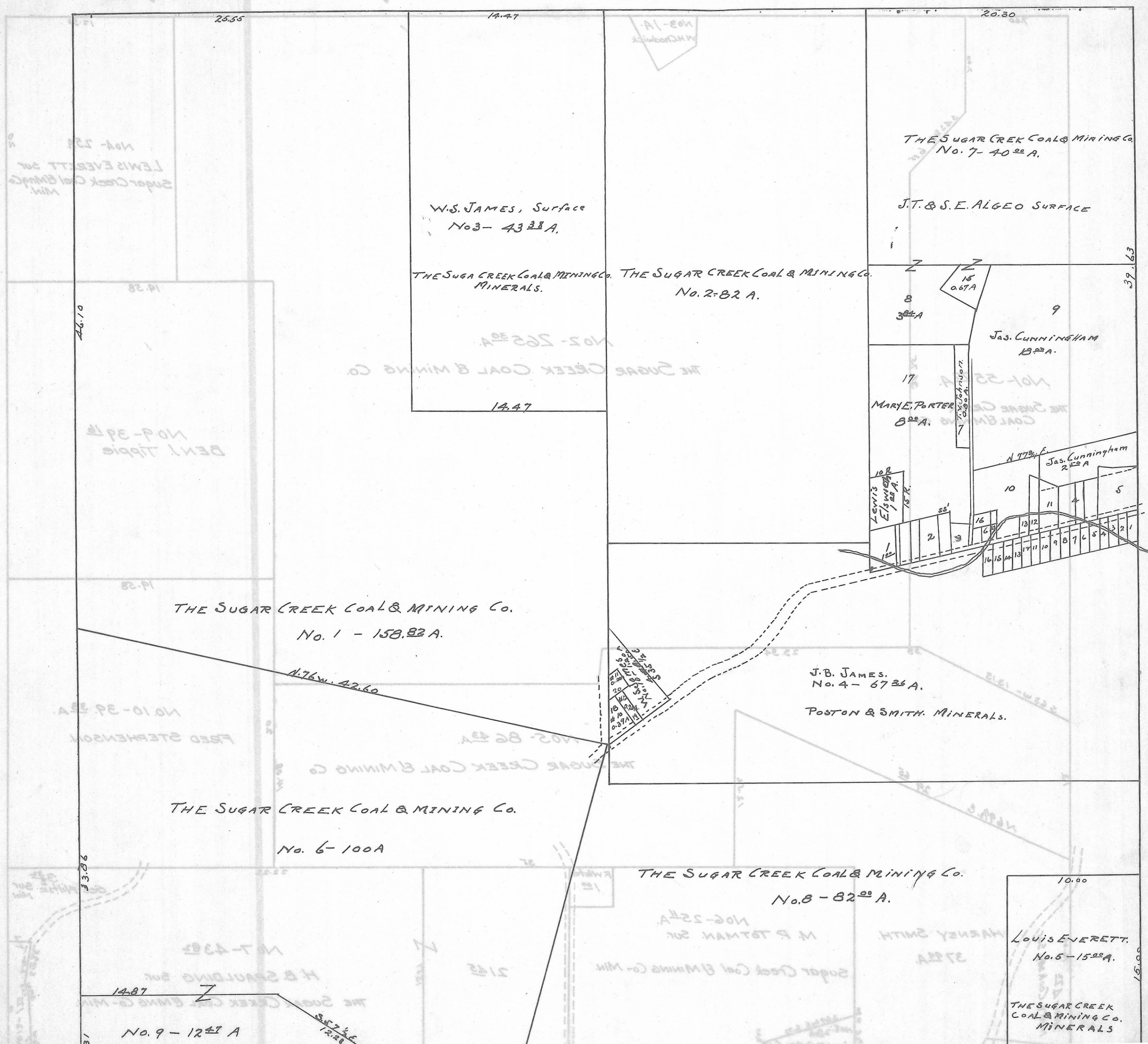


DOVER TWP,

SEC. 2 - TOWN, 10 - RANGE, 14

20 Rods = 1 in.



W.S. JAMES, Surface
No. 3 - 43²/₁₀ A.

THE SUGAR CREEK COAL & MINING CO.
No. 7 - 40²/₁₀ A.

J.T. & S.E. ALGEO SURFACE

THE SUGAR CREEK COAL & MINING CO. MINERALS.
THE SUGAR CREEK COAL & MINING CO.
No. 2 - 82 A.

Jas. CUNNINGHAM
13²/₁₀ A.

MARY E. PORTER
8²/₁₀ A.

Jas. Cunningham
2²/₁₀ A.

THE SUGAR CREEK COAL & MINING CO.
No. 1 - 158.82 A.

J.B. JAMES.
No. 4 - 67²/₁₀ A.

POSTON & SMITH. MINERALS.

THE SUGAR CREEK COAL & MINING CO.

No. 6 - 100 A

THE SUGAR CREEK COAL & MINING CO.
No. 8 - 82²/₁₀ A.

LOUIS EVERETT.
No. 5 - 15²/₁₀ A.

THE SUGAR CREEK
COAL & MINING CO.
MINERALS

No. 9 - 12²/₁₀ A