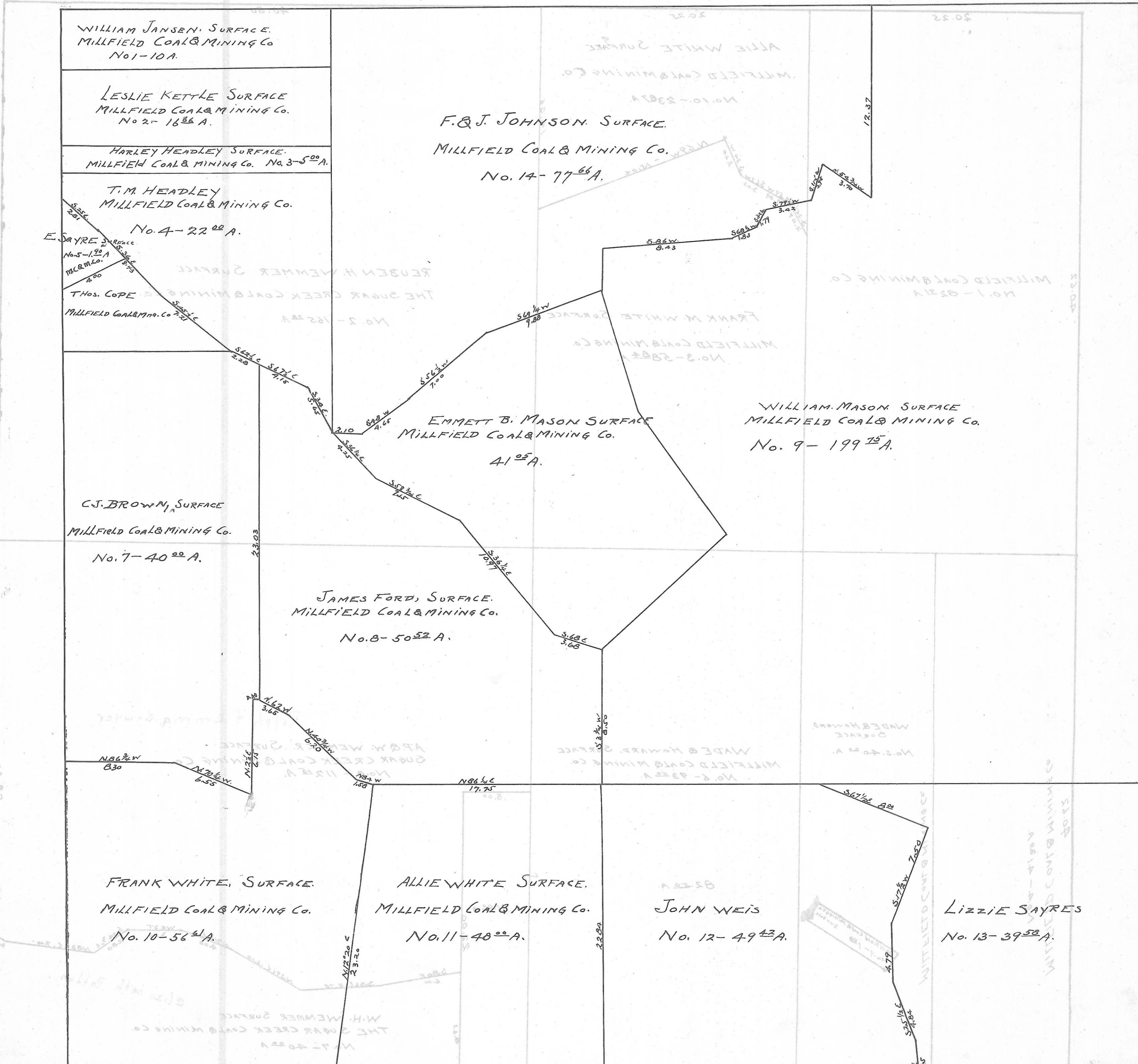


DOVER TWP, SEC. 6 - TOWN, 10 - RANGE, 14.

20 Rods = 1" = 1/2000'



WILLIAM JANSEN SURFACE.  
MILLFIELD COAL & MINING CO  
No. 1-10A.

LESLIE KETTLE SURFACE  
MILLFIELD COAL & MINING CO.  
No. 2-1686A.

HARLEY HEADLEY SURFACE.  
MILLFIELD COAL & MINING CO. No. 3-500A.

T.M. HEADLEY  
MILLFIELD COAL & MINING CO.  
No. 4-2200A.

E. SAYRE SURFACE  
No. 5-100A  
M.C. & M.CO.

T. HOS. COPE  
MILLFIELD COAL & MINING CO. No. 6-721A

C.J. BROWN SURFACE  
MILLFIELD COAL & MINING CO.  
No. 7-4000A.

JAMES FORD SURFACE.  
MILLFIELD COAL & MINING CO.  
No. 8-5052A.

FRANK WHITE SURFACE.  
MILLFIELD COAL & MINING CO.  
No. 10-564A.

ALLIE WHITE SURFACE.  
MILLFIELD COAL & MINING CO.  
No. 11-4800A.

JOHN WEIS  
No. 12-4942A.

LIZZIE SAYRES  
No. 13-3958A.

F. & J. JOHNSON SURFACE.  
MILLFIELD COAL & MINING CO.  
No. 14-7766A.

EMMETT B. MASON SURFACE  
MILLFIELD COAL & MINING CO.  
4105A.

WILLIAM MASON SURFACE  
MILLFIELD COAL & MINING CO.  
No. 9-19915A.