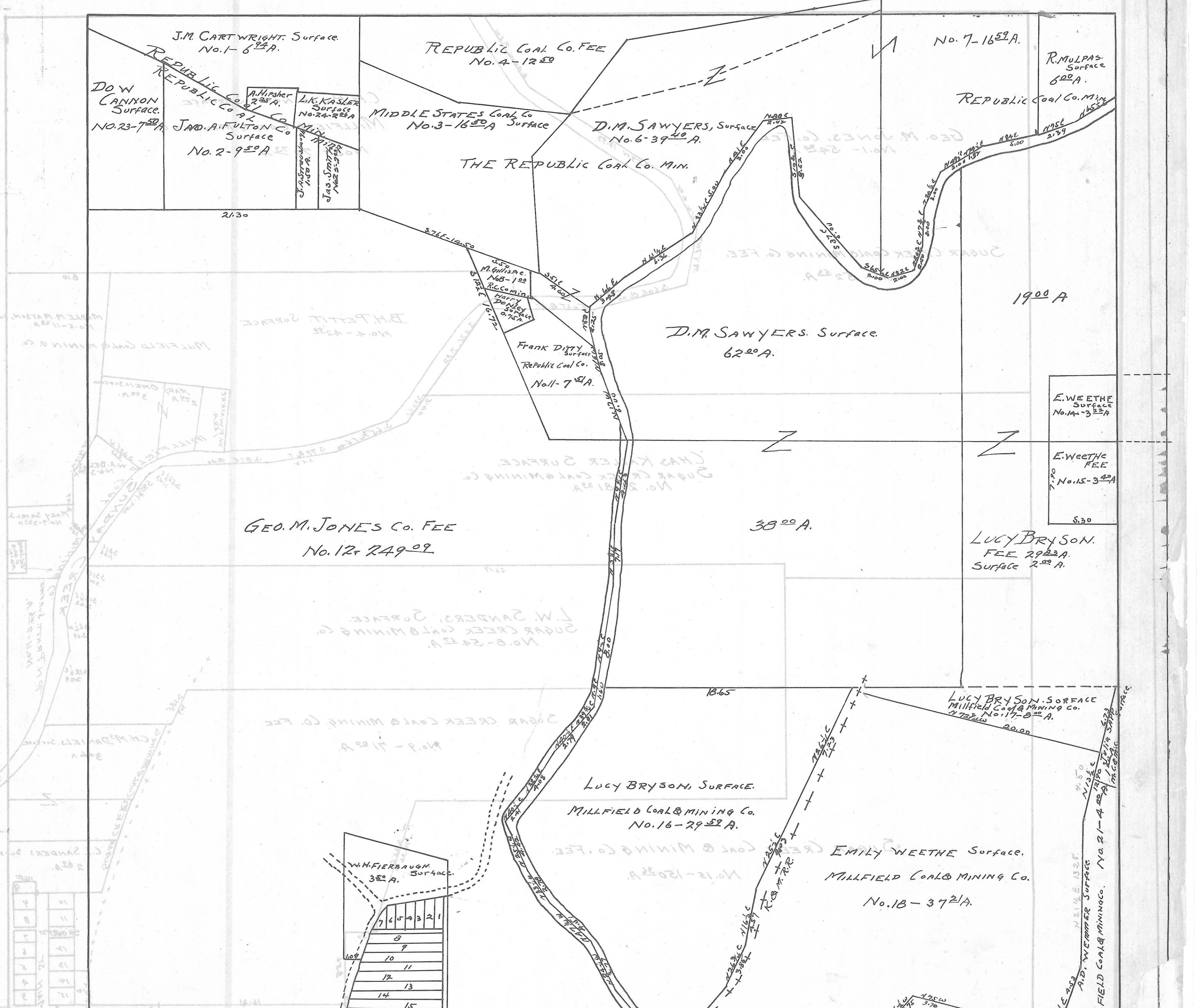


DOVER TWP., - SEC. 18 - TOWN, 10 - RANGE, 14.

20-Rods = 114.



J.M. CARTWRIGHT, Surface.
No. 1-6²⁴A.

REPUBLIC COAL CO. FEE
No. 4-12²⁰

No. 7-16²¹A.

R. MULPAS
Surface
600 A.

D.W. CANNON
Surface.
No. 23-7⁵⁰A.

J.A.D. A. FULTON Co
Surface
No. 2-9⁵⁰A.

A. HIRSHER
Surface
No. 24-2²⁵A.

L.K. KASLER
Surface
No. 24-2²⁵A.

M.L. SMITH
Surface
No. 25-9⁵⁰A.

MIDDLE STATES COAL Co
Surface
No. 3-16⁵⁰A.

D.M. SAWYERS, Surface
No. 6-39⁴⁰A.

REPUBLIC COAL Co. MIN.

THE REPUBLIC COAL Co. MIN.

2130

578E-14⁵⁰

M. Gillispie
No. 8-1⁰⁰

R.C. Comins
Harry
Doyle
No. 10-1⁰⁰

Frank Ditty
Surface
No. 11-7⁵¹A.

D.M. SAWYERS, Surface.
62⁰⁰A.

1900 A

E. WEETHE
Surface
No. 14-3²²A.

E. WEETHE
FEE
No. 15-3⁴⁰A.

GEO. M. JONES Co. FEE
No. 12-249⁰⁹

38⁰⁰A.

LUCY BRYSON.
FEE 29²³A.
Surface 2⁰⁰A.

530

L.W. SANDERS, Surface
SUGAR CREEK COAL & MINING Co.
No. 8-24²⁴A.

LUCY BRYSON, SURFACE
MILLFIELD COAL & MINING Co.
No. 17-B⁰⁰A.

LUCY BRYSON, SURFACE.
MILLFIELD COAL & MINING Co.
No. 16-29⁵²A.

EMILY WEETHE Surface.
MILLFIELD COAL & MINING Co.
No. 18-37²¹A.

W.H. FIERBAUGH
Surface
3⁵²A.

7	6	5	4	3	2	1
8						
9						
10						
11						
12						
13						
14						
15						
16						

475W
370
G.H. BOUNDNOTT