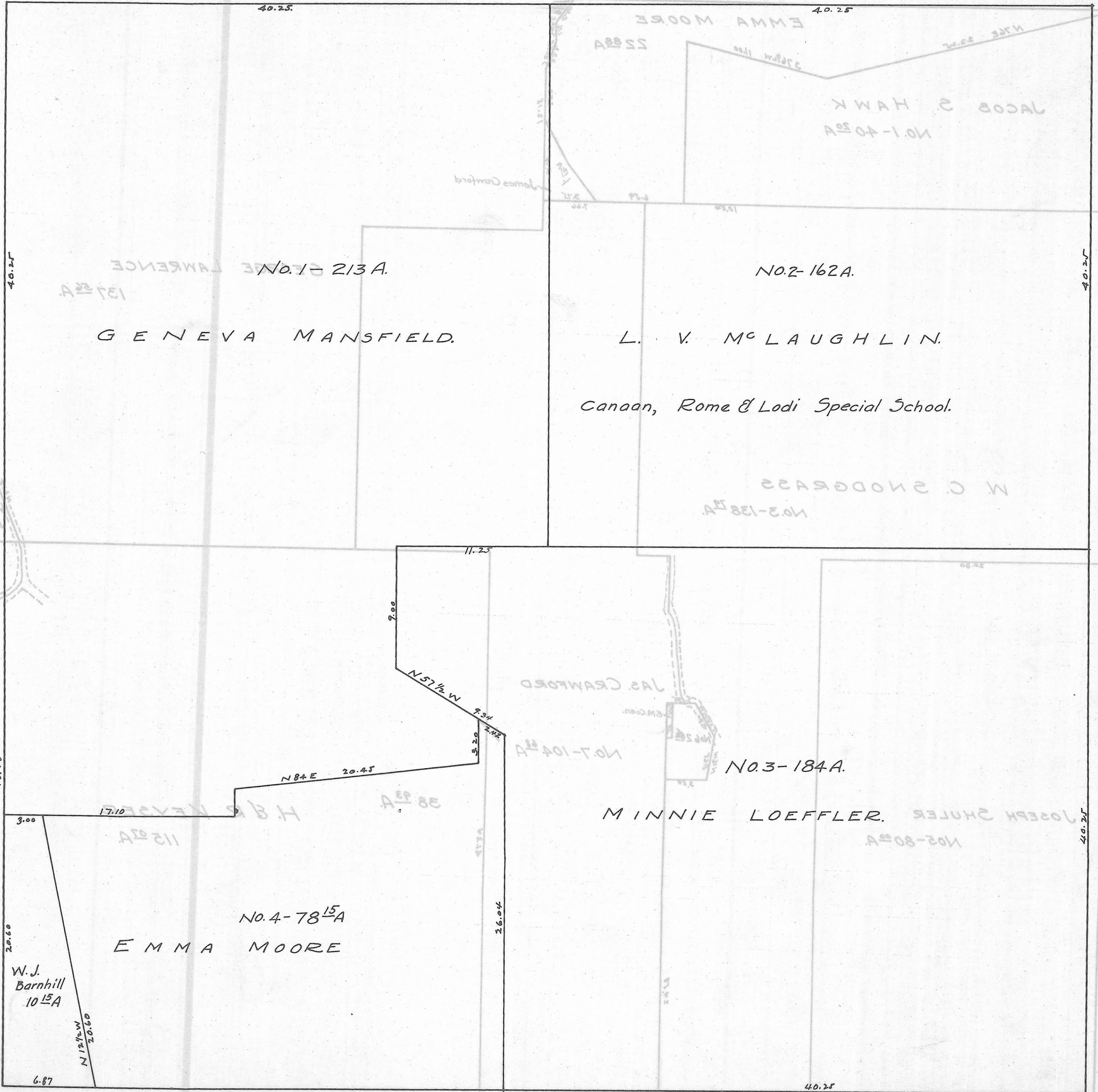


LODI TWP. SEC. 6 TOWN 4 RANGE 13.

Scale 20 Rods to 1 inch



GENEVA MANSFIELD.
No. 1-213A

L. V. McLAUGHLIN.
No. 2-162A.
Canaan, Rome & Lodi Special School.

EMMA MOORE
No. 4-78 1/2 A

MINNIE LOEFFLER.
No. 3-184A.

W. J. Barnhill
10 1/2 A
N 12 1/2 W 20.60
6.87

Jas. Crawford
No. 7-104 1/2 A

JACOB S. HAWK
No. 1-40 1/2 A

W. C. Snodgrass
No. 3-138 1/2 A

EMMA MOORE
2288A

James Crawford

H. B. Kevsler
No. 8-112 1/2 A

38 1/2 A

No. 2-80 1/2 A

40.25

40.25

40.25

40.25

40.25

40.25

40.25

11.25

2.00

9.34

2.32

3.20

4.75

26.04

3.00

17.10

20.60

N 12 1/2 W 20.60