

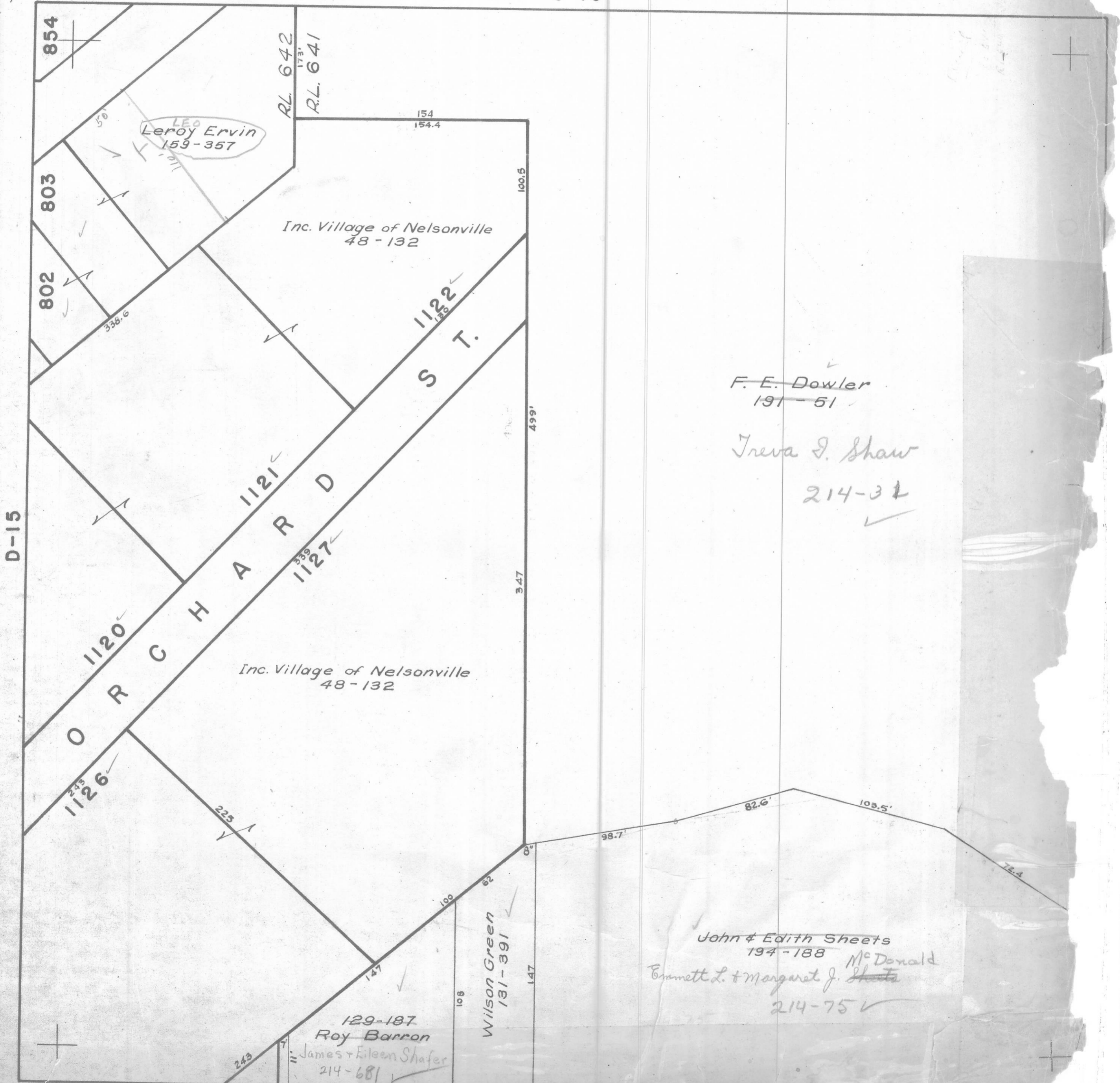
ATHENS COUNTY AUDITOR TAX PLAT

NELSONVILLE D

York Twp.
T12 - R15

Scale 1" = 50'

C-16



F. E. Dowler
191-51 ✓

Treva S. Shaw
214-31 ✓

John + Edith Sheets
194-188 ✓

Emmett L. + Margaret J. McDonald
214-75 ✓

C-16

REVISED TO AP