

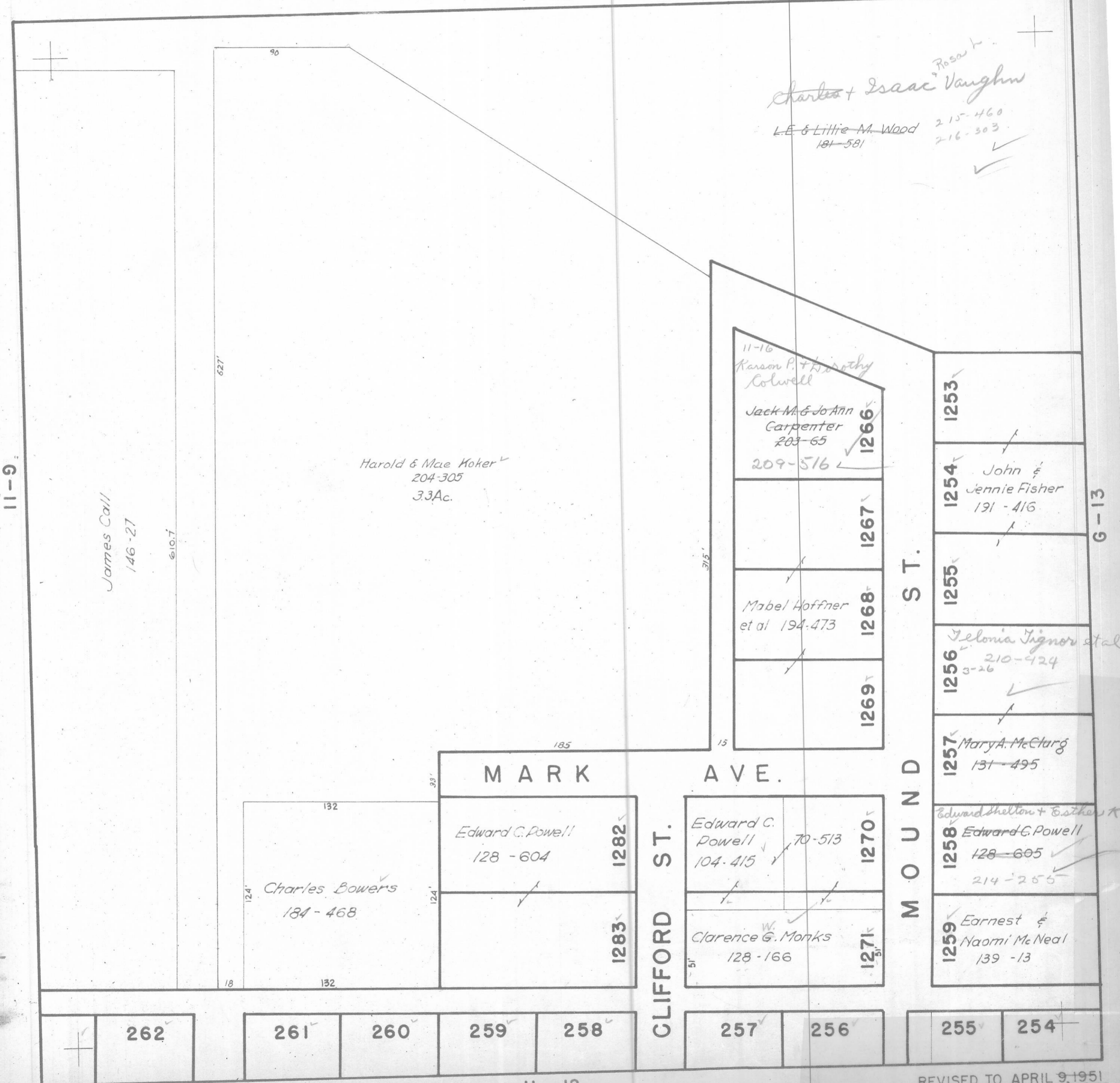
ATHENS COUNTY AUDITOR TAX PLAT

NELSONVILLE G-12

York Twp. ✓
T12-R15

Scale 1" = 50'

F-12



11-9

James Call
146-27

610.7

627

90

Harold & Mae Koker ✓
204-305
3.3Ac.

11-16
Carson P. & Dorothy
Colwell

Jack M. & Jo Ann
Carpenter ✓
203-65
209-516 ✓

Mabel Hoffner
et al 194-473

Edward C.
Powell ✓
104-415 ✓ 70-513

Clarence W. Monks ✓
128-166

Charles + Isaac Vaughan
Rosau ✓

L.E. & Lillie M. Wood ✓
181-581
215-460 ✓
216-303 ✓

John &
Jennie Fisher ✓
191-416

Felonia Tignor et al ✓
210-424
3-26 ✓

Mary A. McClurg ✓
131-495

Edward Shelton & Esther ✓
Edward C. Powell ✓
128-605 ✓
214-255 ✓

Earnest &
Naomi Mc Neal ✓
139-13

262

261

260

259

258

257

256

255

254

H-12

REVISED TO APRIL 9, 1951
13-1953 44-1952

G-13

CLIFFORD ST.
MARK AVE.
MOUND ST.

CLIFFORD ST.