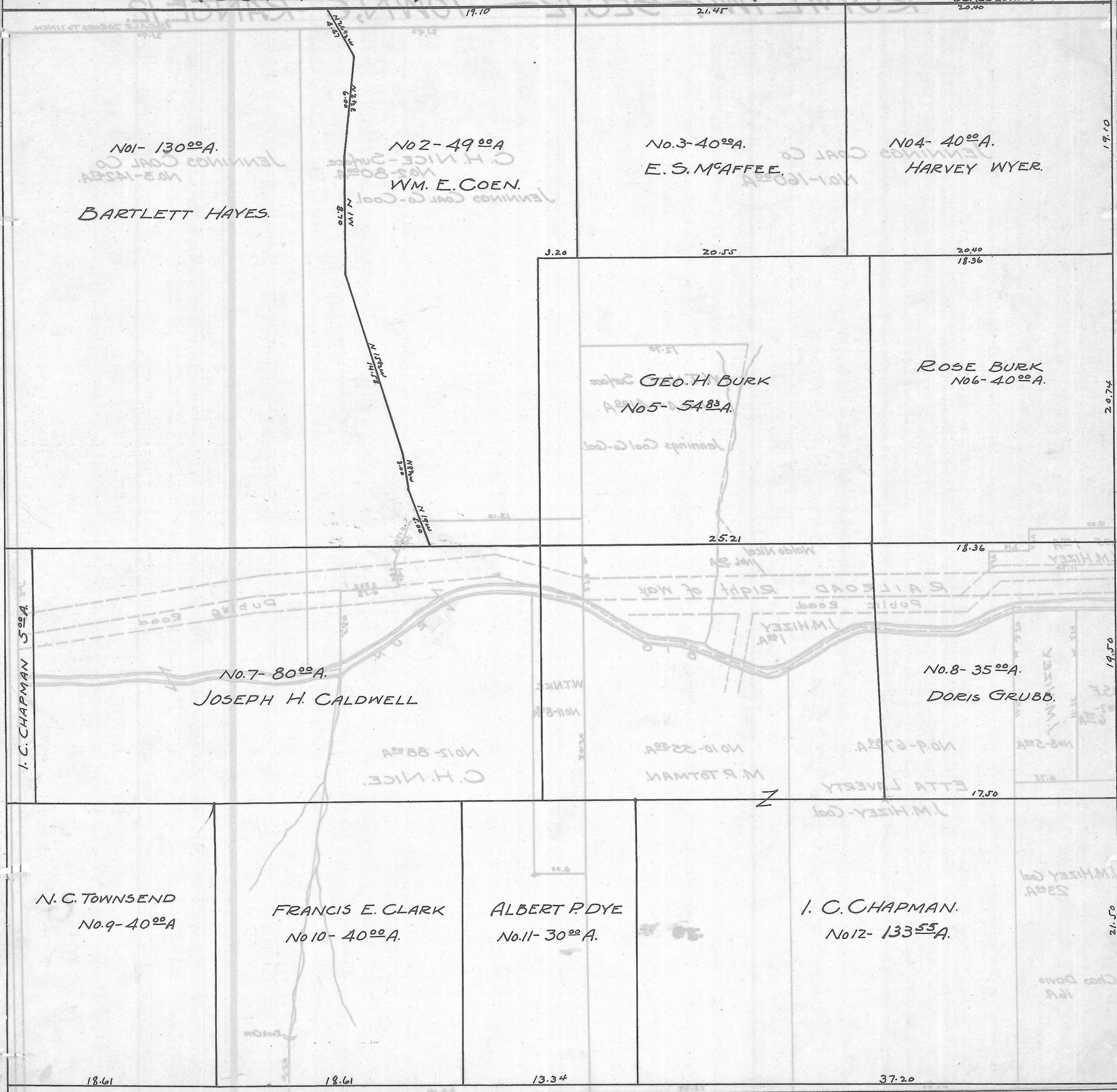


ROME TWP. - SEC. 13 - TOWN, 6 - RANGE, 12.

SCALE 20 RODS TO 1 INCH.



No. 1- 130<sup>00</sup>A.

BARTLETT HAYES.

No. 2- 49<sup>00</sup>A.

WM. E. COEN.

No. 3- 40<sup>00</sup>A.

E. S. McAFFEE.

No. 4- 40<sup>00</sup>A.

HARVEY WYER.

GEO. H. BURK

No. 5- 548<sup>3</sup>A.

ROSE BURK

No. 6- 40<sup>00</sup>A.

No. 7- 80<sup>00</sup>A.

JOSEPH H. CALDWELL

No. 8- 35<sup>00</sup>A.

DORIS GRUBB.

N. C. TOWNSEND

No. 9- 40<sup>00</sup>A.

FRANCIS E. CLARK

No. 10- 40<sup>00</sup>A.

ALBERT P. DYE

No. 11- 30<sup>00</sup>A.

I. C. CHAPMAN.

No. 12- 133<sup>55</sup>A.

18.61

18.61

13.34

37.20

I. C. CHAPMAN 5<sup>00</sup>A.