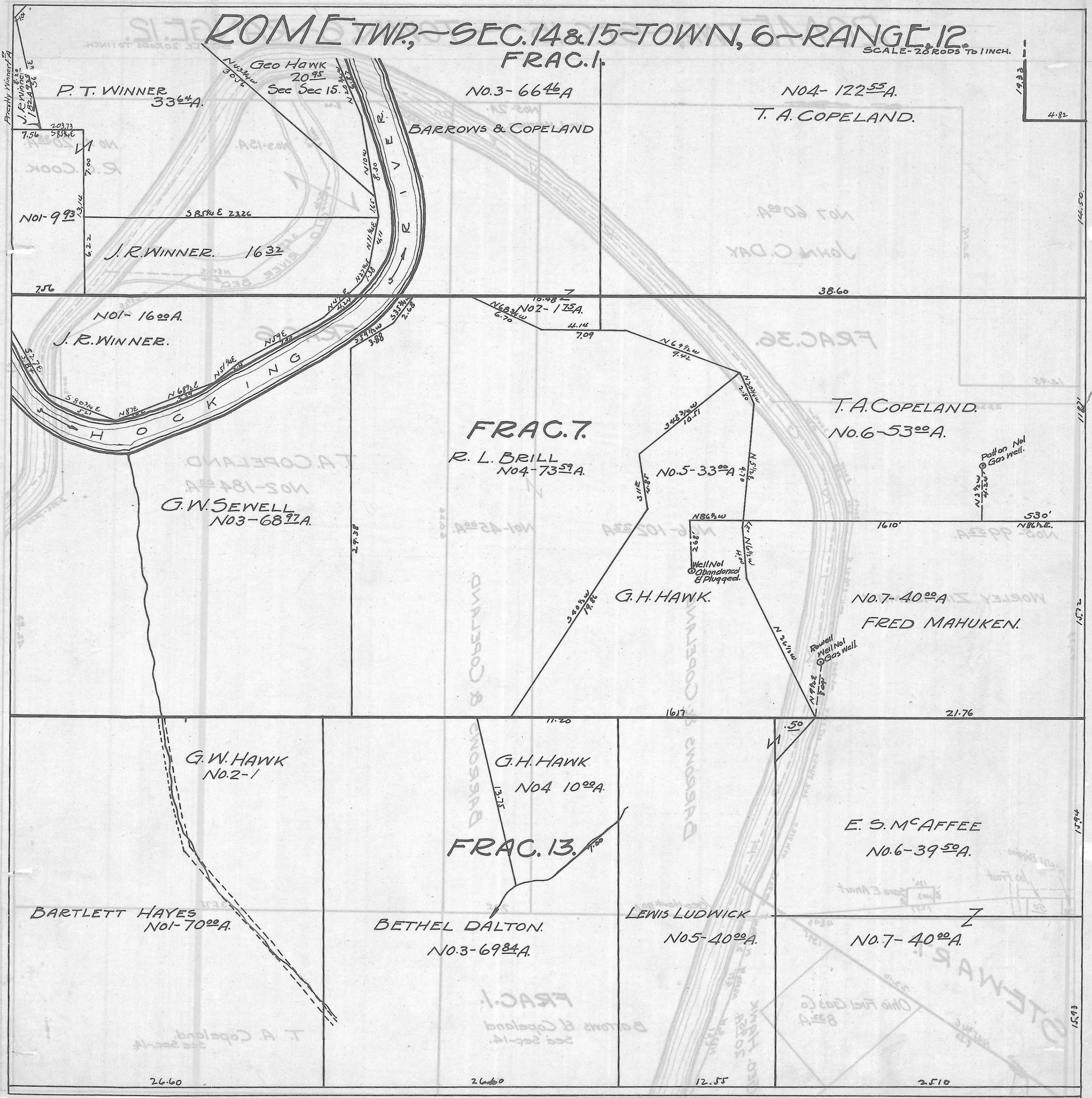


ROME TWP. - SEC. 14 & 15 - TOWN, 6 - RANGE, 12.
FRAC. 1.

SCALE - 20 RODS TO 1 INCH.



P. T. WINNER
336⁴A.

Geo Hawk
20⁹⁵
Sec Sec 15.

NO. 3 - 66⁴A

NO. 4 - 122⁵⁵A.
T. A. COPELAND.

BARROWS & COPELAND

NO. 1 - 9⁹³

J. R. WINNER. 16³²

NO. 1 - 16⁰⁰A.
J. R. WINNER.

FRAC. 7.

R. L. BRILL
NO. 4 - 73⁵⁹A.

NO. 5 - 33⁰⁰A

T. A. COPELAND.
NO. 6 - 53⁰⁰A.

G. W. SEWELL
NO. 3 - 68⁹²A.

G. H. HAWK.

NO. 7 - 40⁰⁰A
FRED MAHUKEN.

G. W. HAWK
NO. 2 - 1

G. H. HAWK
NO. 4 - 10⁰⁰A.

FRAC. 13.

E. S. McAFFEE
NO. 6 - 39⁵⁰A.

BARTLETT HAYES
NO. 1 - 70⁰⁰A.

BETHEL DALTON.
NO. 3 - 69⁸⁴A.

LEWIS LUDWICK
NO. 5 - 40⁰⁰A.

NO. 7 - 40⁰⁰A.

26.60

26.60

12.55

25.10