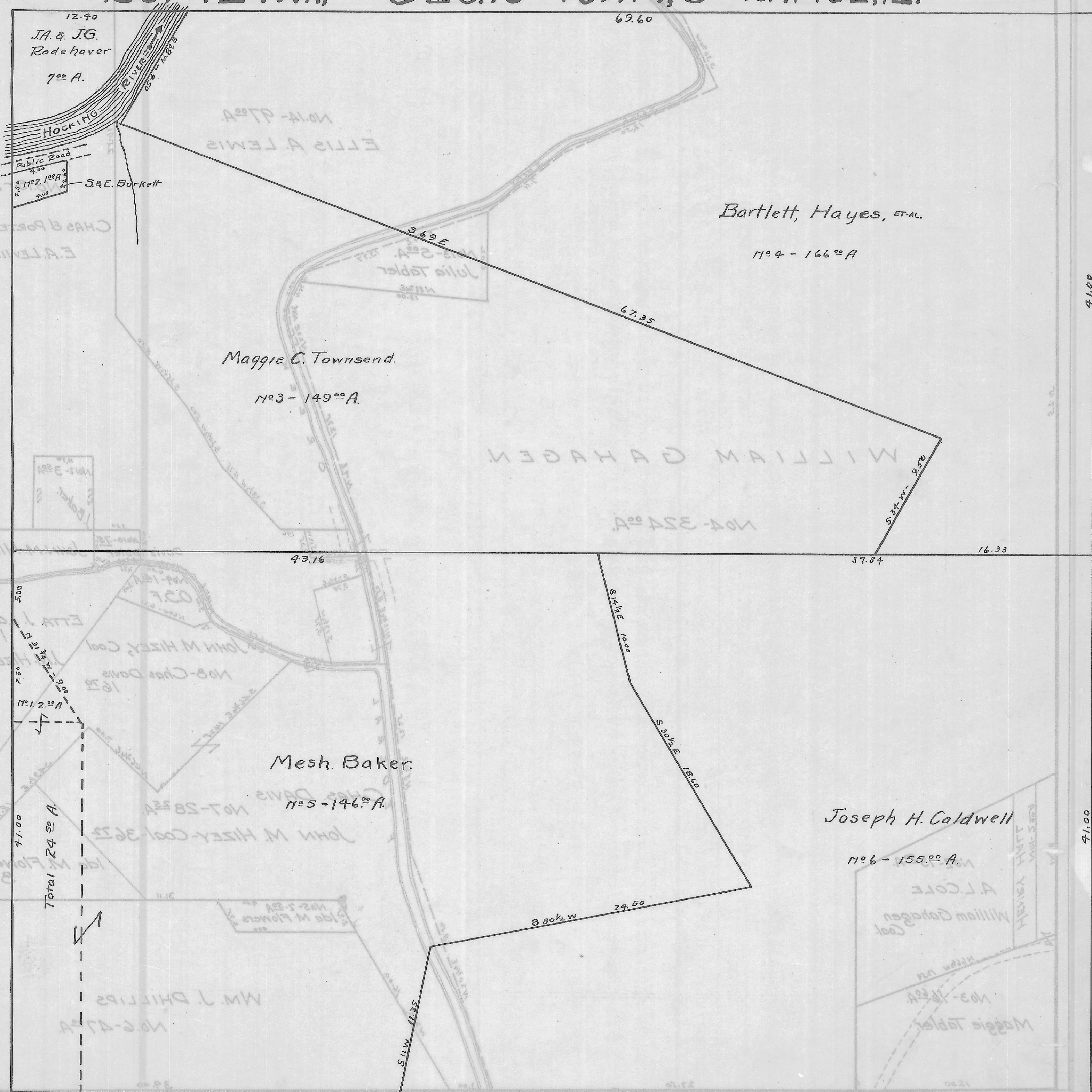


ROME TWP. - SEC. 19 - TOWN, 6 - RANGE, 12.

SCALE 20 RODS TO 1 IN.



12.40
JA. & JG.
Rodehaver
7⁰⁰ A.

69.60

HOCKING RIVER

NO. 14 - 17⁰⁰ A.
ELLIS A. LEWIS

Bartlett, Hayes, ET-AL.

17⁰⁰ 4 - 166⁰⁰ A

Maggie C. Townsend.

17⁰⁰ 3 - 149⁰⁰ A.

WILLIAM GAHAGEN

NO. 4 - 324⁰⁰ A.

43.16

37.84

16.33

Mesh Baker.

17⁰⁰ 5 - 146⁰⁰ A.

S 1/4⁰⁰ E 10.00

S 3/4⁰⁰ E 18.60

Joseph H. Caldwell

17⁰⁰ 6 - 155⁰⁰ A.

S 80¹/₂ W 24.50

Total 24.50 A

71.00

41.00

41.00

S 11¹/₂ W 21.35