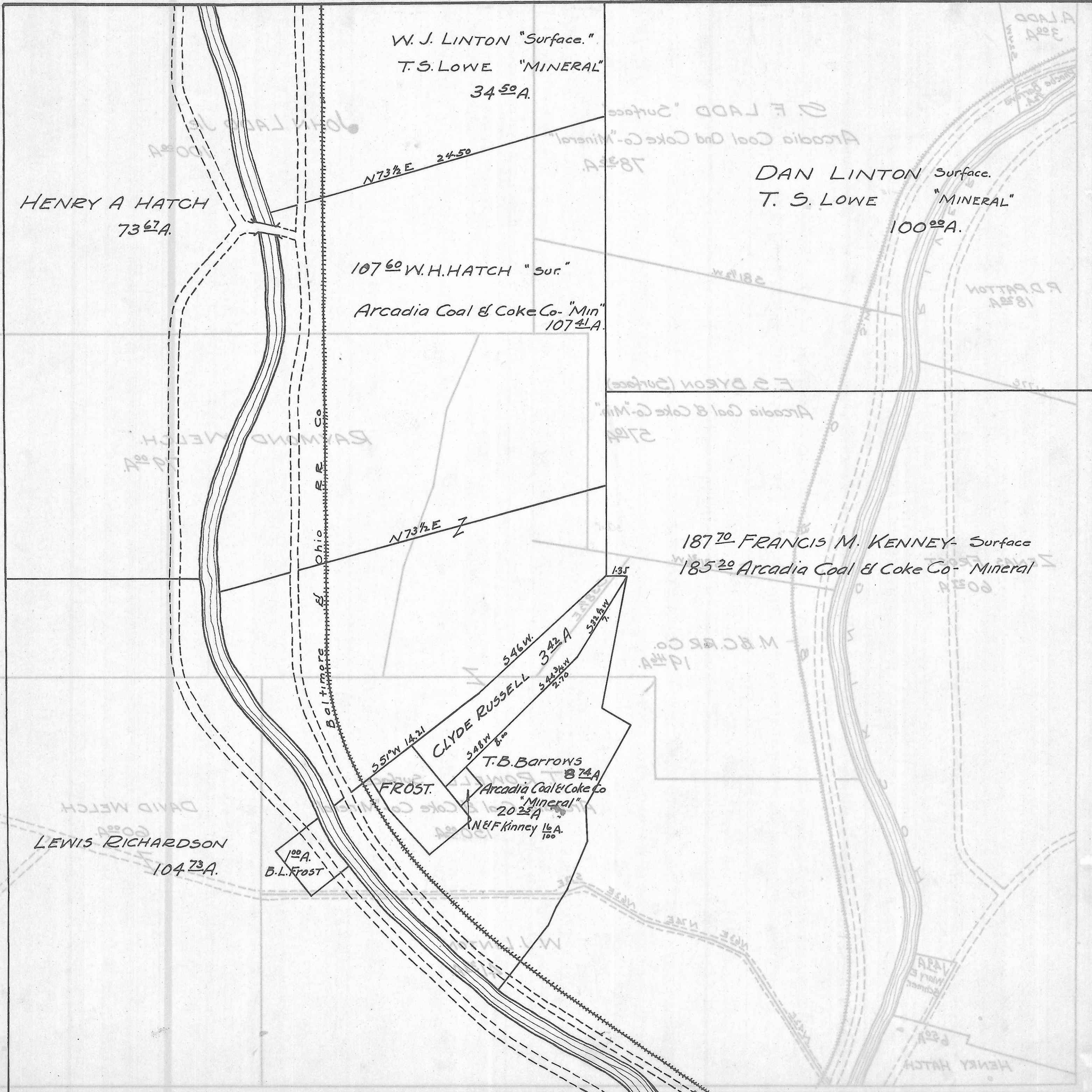


ROME TWP, - SEC. 31 - TOWN, 6 - RANGE, 11.

SCALE - 20 RODS TO 1 INCH.



W. J. LINTON "Surface."
T. S. LOWE "MINERAL"
34⁵⁰A.

HENRY A HATCH
73⁶⁷A.

DAN LINTON Surface.
T. S. LOWE "MINERAL"
100⁰⁰A.

107⁶⁰ W. H. HATCH "Sur."
Arcadia Coal & Coke Co. "Min"
107⁴¹A.

187⁷⁰ FRANCIS M. KENNEY- Surface
185²⁰ Arcadia Coal & Coke Co- Mineral

N73 1/2 E

Baltimore & Ohio R.R. Co.

551°W 14.21
CLYDE RUSSELL 34²²A
348°W 8.00
T. B. Barrows 8⁷⁴A
Arcadia Coal & Coke Co
"Mineral"
20²⁵A
N E F Kinney 1⁶A
100

LEWIS RICHARDSON
104⁷³A.

1⁰⁰A.
B. L. Frost

1.35