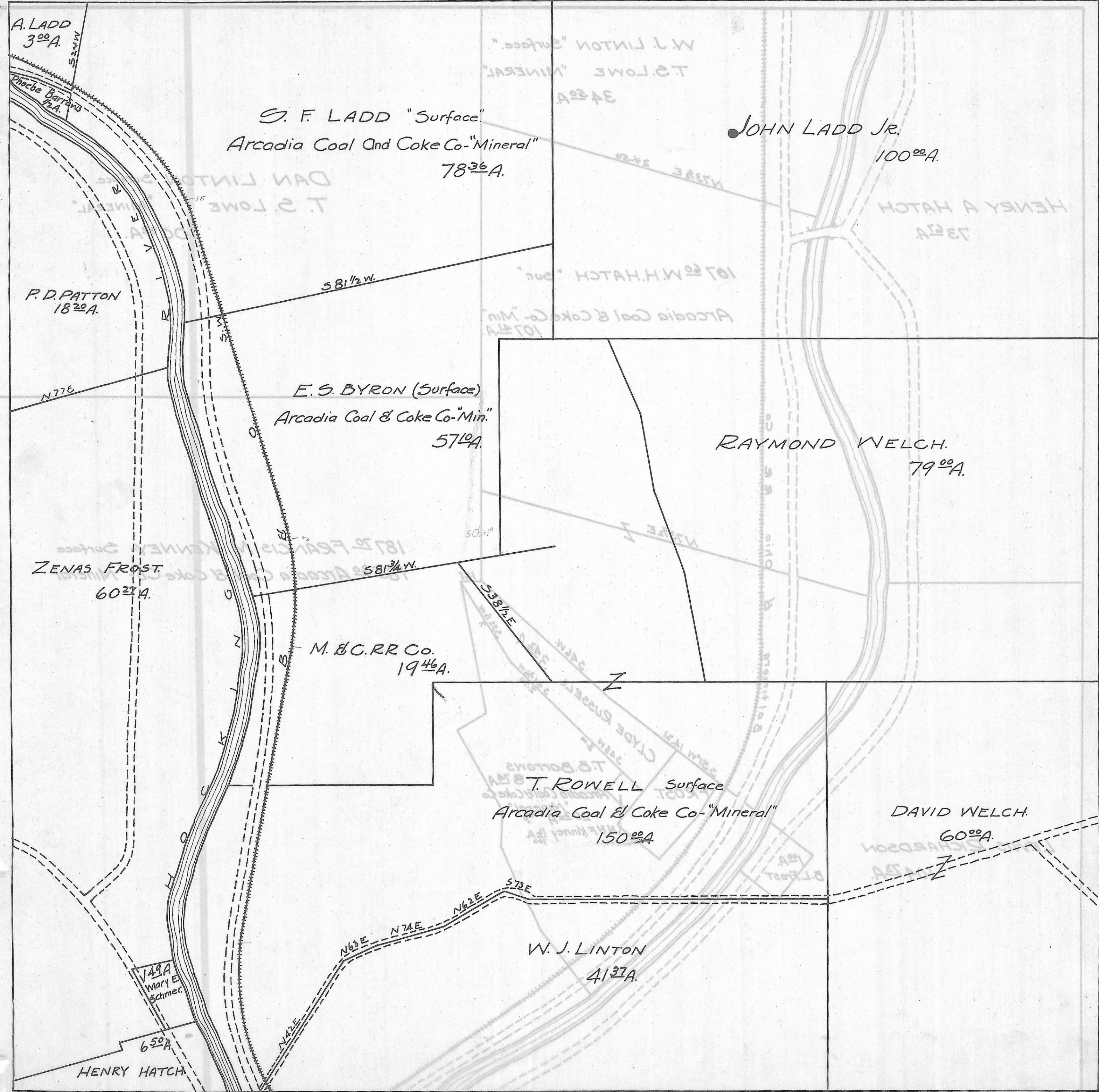


ROME TWP., SEC. 32 - TOWN, 6 - RANGE, 11.

SCALE 20 RODS TO 1 INCH.



A. LADD
3⁰⁰A.

S. F. LADD "Surface"
Arcadia Coal And Coke Co-"Mineral"
78³⁶A.

JOHN LADD JR.
100⁰⁰A.

P. D. PATTON
18²⁰A.

E. S. BYRON (Surface)
Arcadia Coal & Coke Co-"Min."
57⁰⁰A.

RAYMOND WELCH.
79⁰⁰A.

ZENAS FROST.
60²⁸A.

M. & C. RR Co.
19⁴⁶A.

T. ROWELL Surface
Arcadia Coal & Coke Co-"Mineral"
150⁰⁰A.

DAVID WELCH.
60⁰⁰A.

W. J. LINTON
41³⁷A.

149⁰⁰A
Mary E. Schmer.

6⁵⁰A
HENRY HATCH