

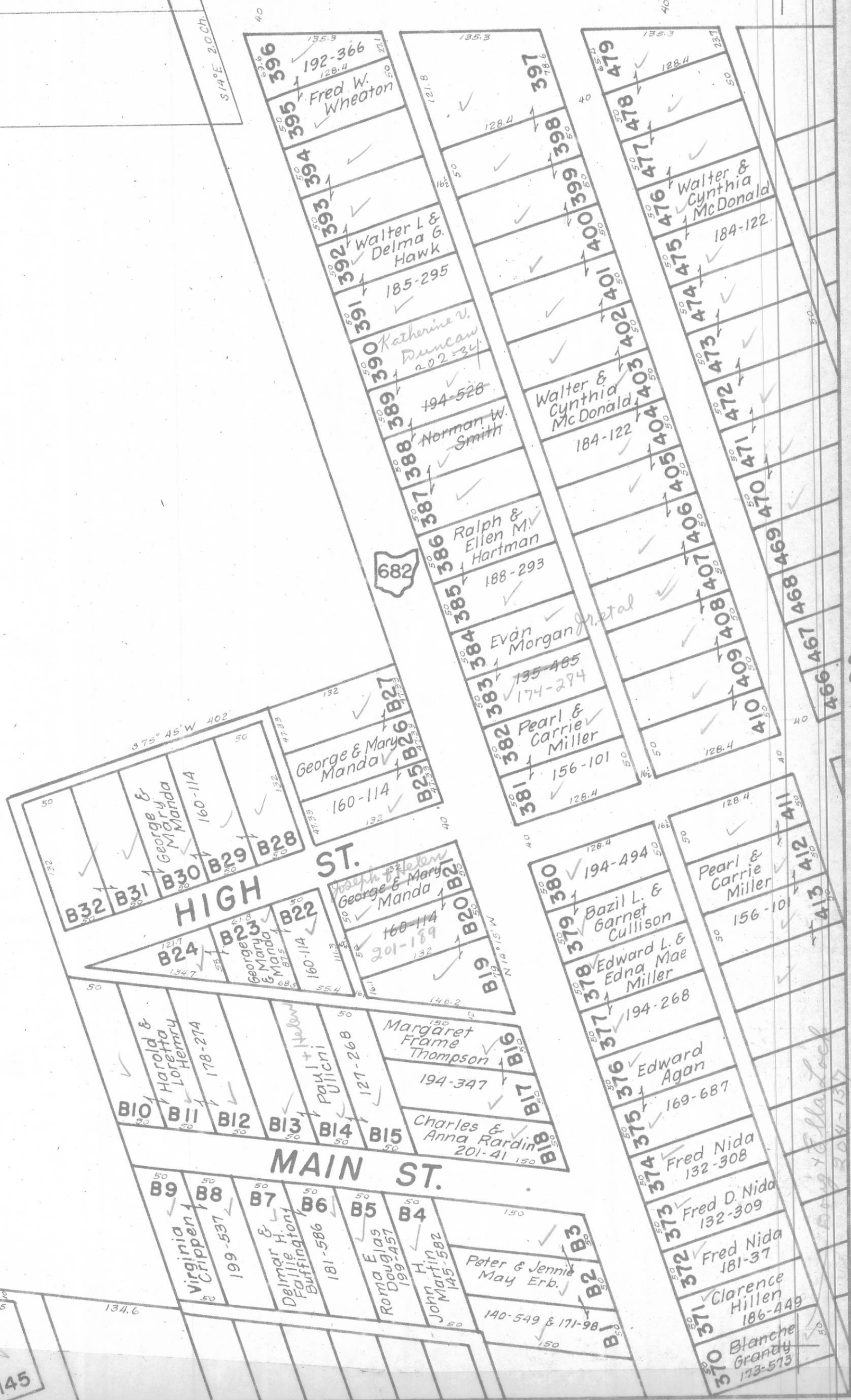
DOVER TOWNSHIP SEC. 19

*Ethel Midcalf*  
202-236  
0.63 Ac. ✓

*Beatrice & James Rutter*  
199-113 & 169-560  
1.37 Ac. ✓

14' R/W. S 86° E  
N 86° W  
S 14° E 20 Ch.

*Hugh Finney* ✓



*Edward A. Cottingham* ✓