

TRIMBLE TWP. - FRAC. 30 - TOWN. 11 - RANGE, 14.

SCALE - 20 RODS = 1 IN.

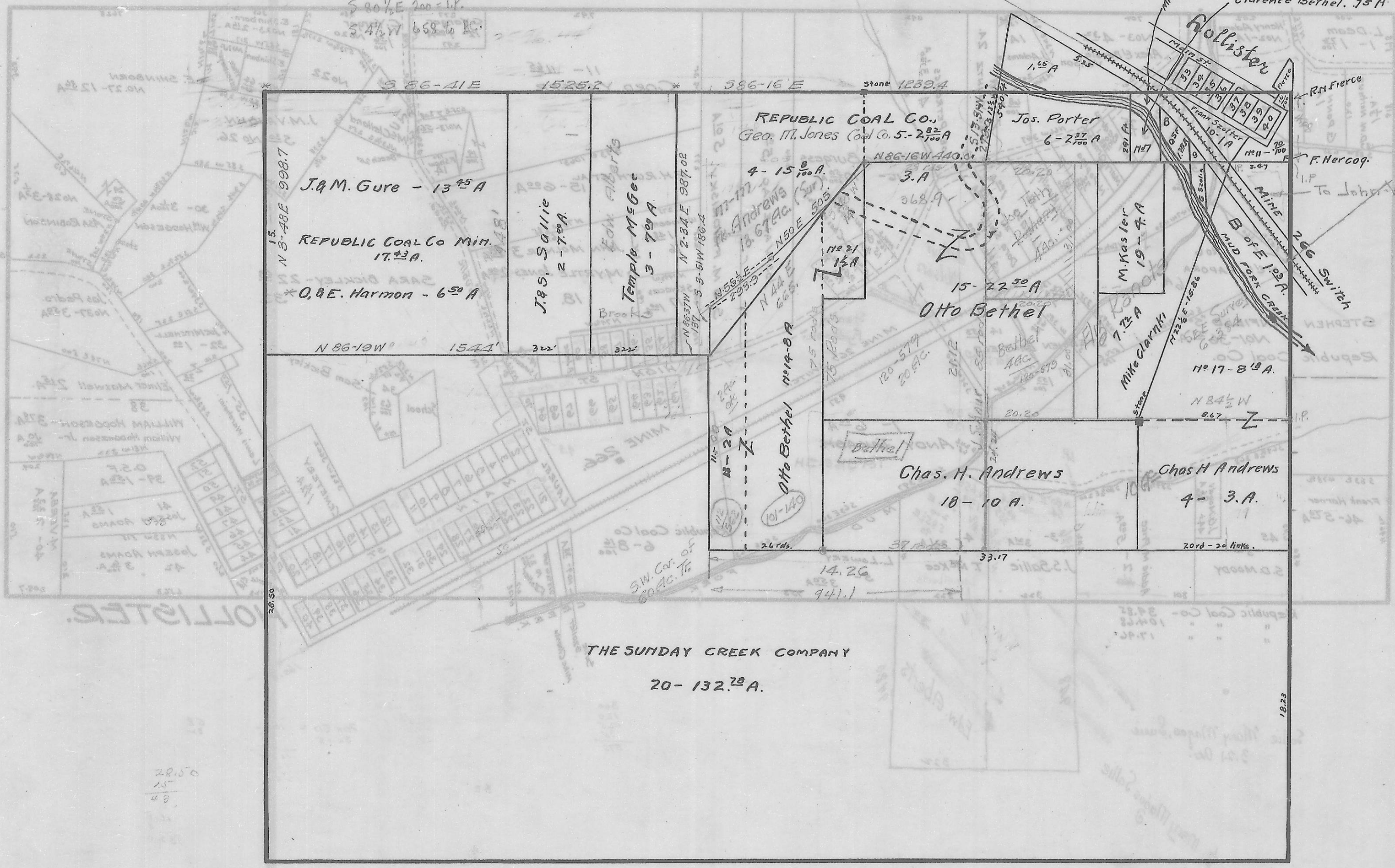
John Gyure
to 151-185 Aug 23, 1929 - 75 ⁵⁹/₁₀₀
J.R. Campbell

To
- Thos Griffiths
157-406 Apr. 7-1934

BC. at point in the south line of Tr. 18 1378' west from
a stone in the middle of the south line of Tr. 18

S 4 1/2 W 948
N 85-25 W 801
N 4 1/2 E 948 = S. line Tr. 18
N 4 1/2 E 608
S 67 1/2 E 117
S 89 1/2 E 177
S 80 1/2 E 200 = 1 P.
S 4 1/2 W 658 to BC.

Ex. Joe Mason 4A.
O. Harmon 6
W. Moody 1
J. Moody 1



REPUBLIC COAL Co., Min., - 104. ⁶⁸/_A.

Silas Moody
to -122/517
O.E. Harmon
BC. at State Rd. 3 Gr. in Tr. 30
West an 1 P.
N. to Road
Along Rd to BC.