

TRIMBLE TWP., - FRAC. 3, - SEC. 9 - TOWN, 11 - RANGE, 14. SCALE 200DS = 1 IN.

Louis Banks et al
4.85 ac. - Sub. #9

Wm. J. Sproull
Sub. 8 - 75 ac.

139-620

Geo. Davis

to June 11, 1923

J.B. Frazier

to Mar. 7, 1940

175-418

Wm. J. Sproull

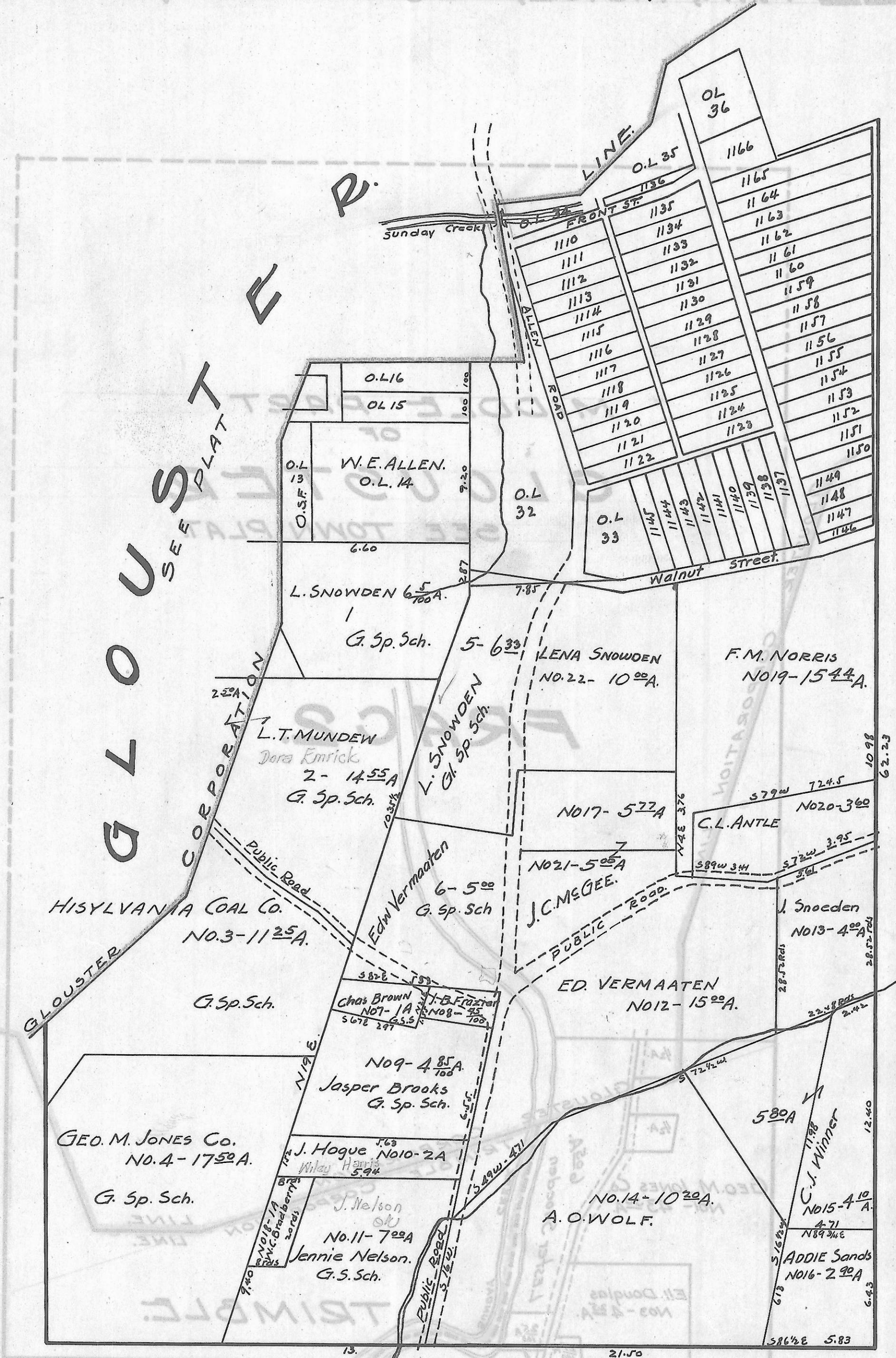
Bessie M. Sproull

Mortgage - 83-377

to James A. Burton - June 13, 1940

1000 @ 10 per mo.

not released



LEWIS & PALMER 47.43.
GEO. M. JONES Co 111.60.
M.E. KIMMEL TRUSTEE 87.00.