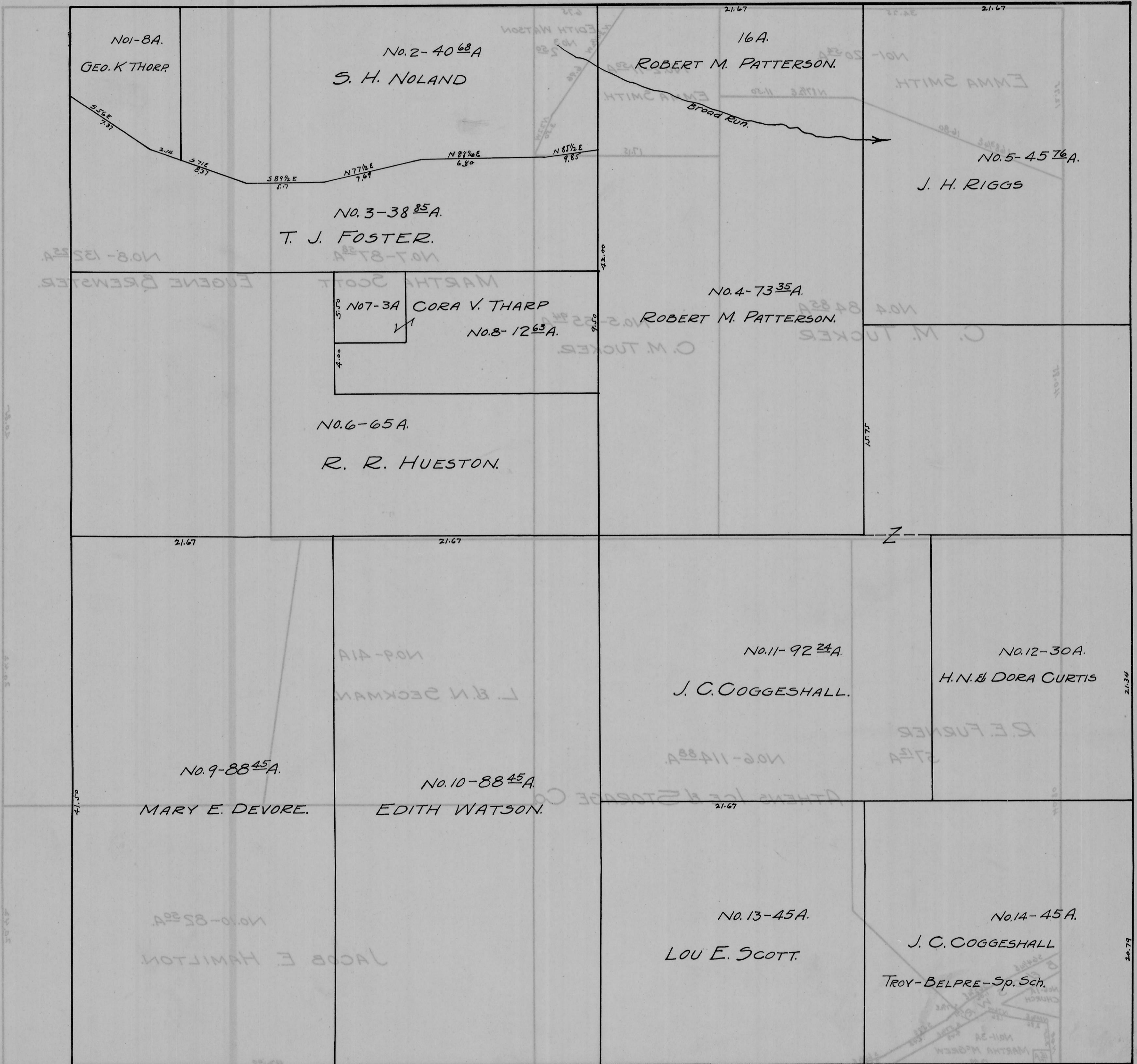


TROY TWP. — SEC. 6 — TOWN 5 — RANGE 11.

Scale 20 Rods to 1 Inch



No. 1-8A.
GEO. K THORP.

No. 2-40.68A
S. H. NOLAND

16A.
ROBERT M. PATTERSON.

No. 5-45.76A.
J. H. RIGGS

No. 3-38.85A.
T. J. FOSTER.

No. 7-3A CORA V. THARP
No. 8-12.63A.

No. 4-73.35A.
ROBERT M. PATTERSON.

No. 6-65A.
R. R. HUESTON.

No. 9-88.45A.
MARY E. DEVORE.

No. 10-88.45A.
EDITH WATSON.

No. 11-92.24A.
J. C. COGGESHALL.

No. 12-30A.
H. N. & DORA CURTIS

No. 13-45A.
LOU E. SCOTT.

No. 14-45A.
J. C. COGGESHALL
Troy-BELPRE-Sp. Sch.