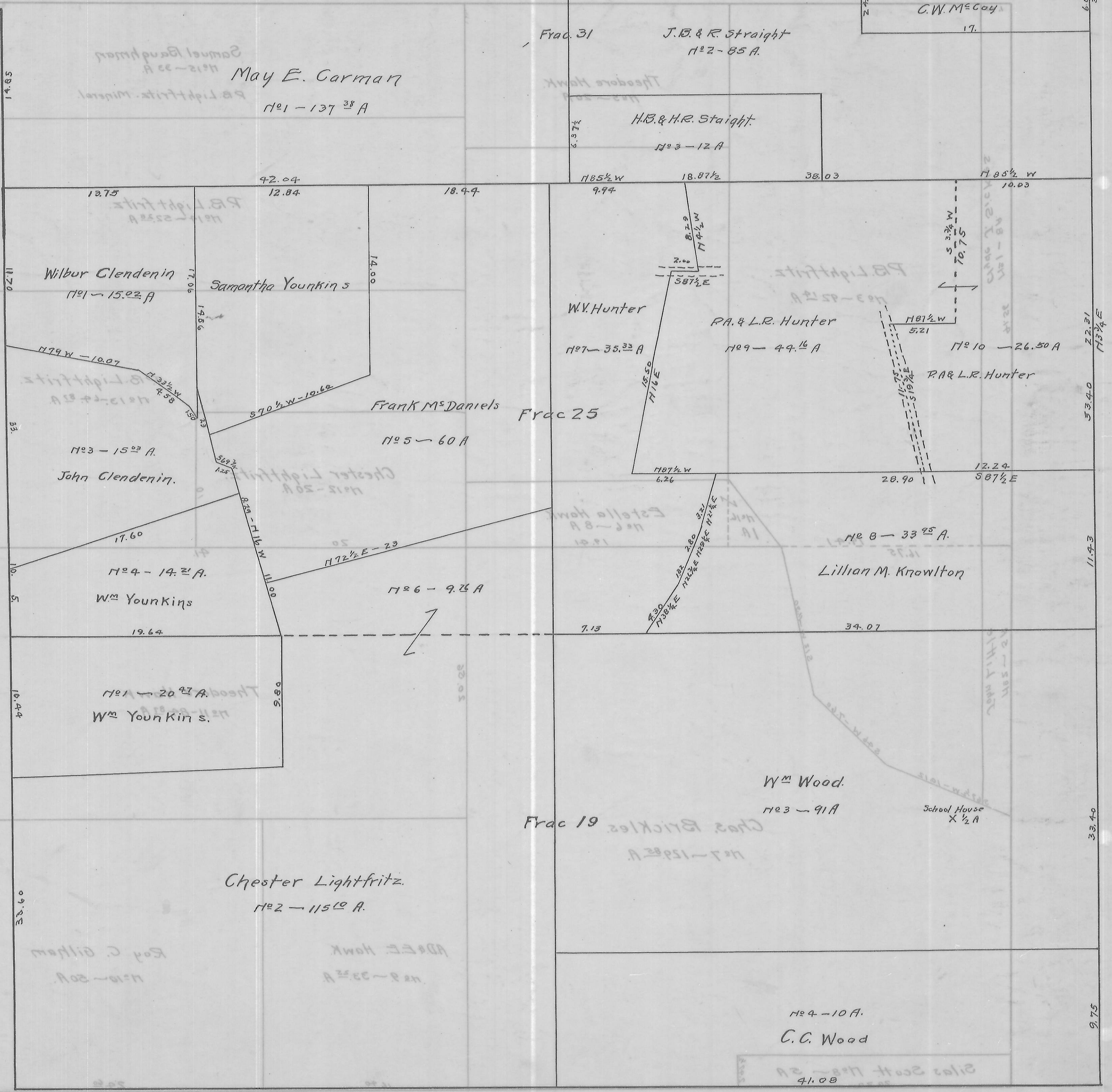


WATERLOO TWP., SEC. 20 - TOWN, 11 - RANGE, 15. SCALE 20 RODS = 1 IN.

1725 - 20 A
C.W. McCoy
17.



May E. Carman
1701 - 137³⁸ A

Frac 31
J.B. & R. Straight
1702 - 85 A.

H.B. & H.R. Straight
1703 - 12 A

Wilbur Clendenin
1701 - 15.02 A

Samantha Youngkins

W.V. Hunter
1707 - 35.33 A

P.A. & L.R. Hunter
1709 - 49.16 A

1710 - 26.50 A

Frank M. Daniels
1705 - 60 A

Frac 25

John Clendenin
1703 - 15.03 A

W.M. Youngkins
1704 - 14.21 A

1706 - 9.74 A

Lillian M. Knowlton
1708 - 33.75 A

W.M. Youngkins
1701 - 20.91 A

Frac 19
W.M. Wood
1703 - 91 A

School House
X 1/2 A

Chester Lightfritz
1702 - 115.00 A

C.C. Wood
1704 - 10 A.

41.08