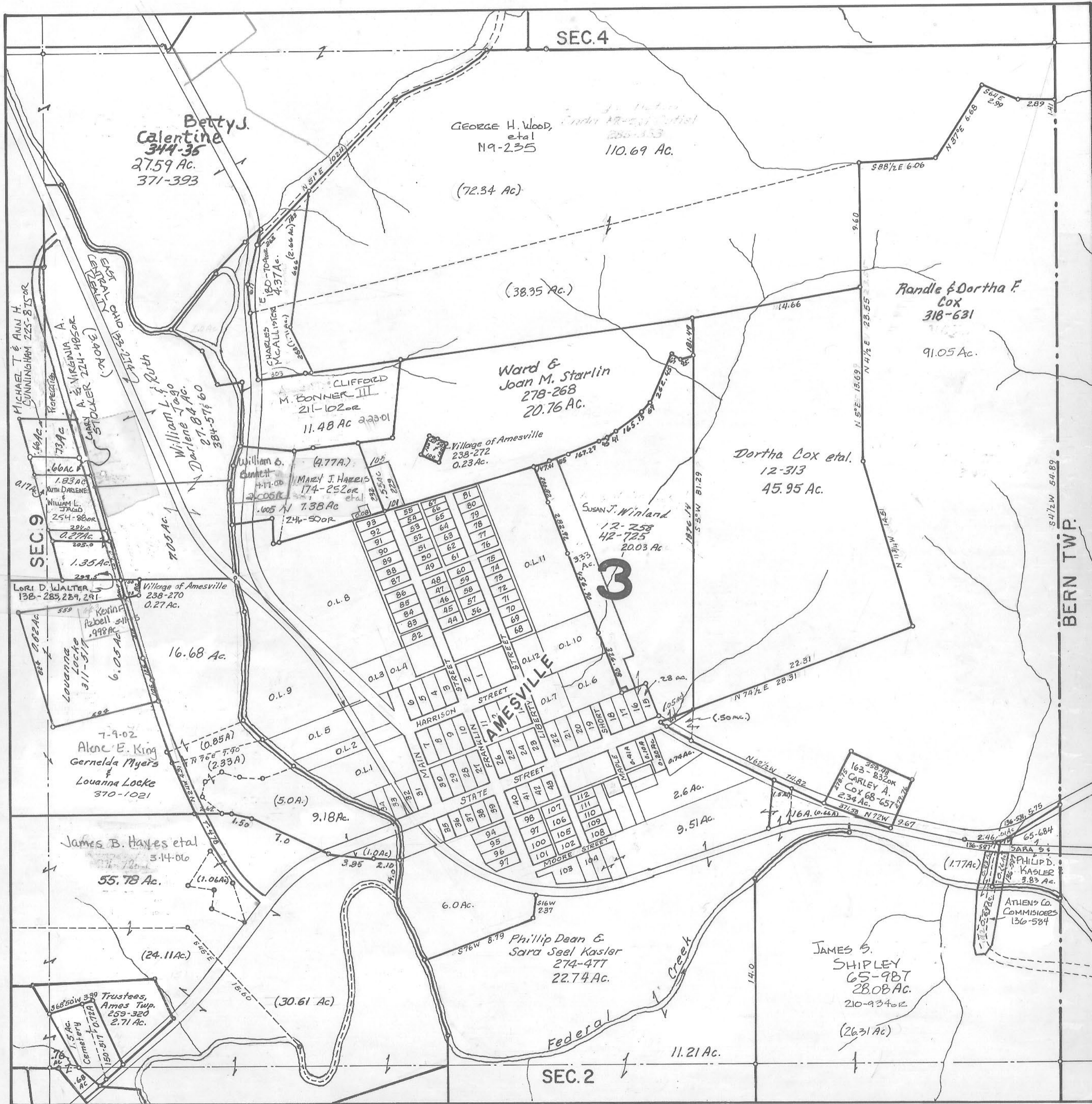


ATHENS COUNTY AUDITOR TAX PLAT
Approx. Scale 1" = 400' or 6 Chains

SEC. 3
Ames Twp.
T6-R13



Betty J. Calentine
344-35
27.59 Ac.
371-393

GEORGE H. Wood, et al
N9-235
110.69 Ac.
(72.34 Ac.)

Randle & Dortha F. Cox
318-631
91.05 Ac.

Ward & Joan M. Starlin
278-268
20.76 Ac.

Dortha Cox et al.
12-313
45.95 Ac.

Susan J. Winland
12-258
42-725
20.03 Ac.

Alene E. King
Gernelde Myers
& Louanna Locke
370-1021

James B. Hayes et al
3-14-06
55.78 Ac.

Phillip Dean & Sara Seel Kasler
274-477
22.74 Ac.

JAMES S. SHIPLEY
65-987
28.08 Ac.
210-93402
(26.31 Ac.)

Trustees, Ames Twp.
259-320
2.71 Ac.

SEC. 9

SEC. 4

SEC. 2

BERN TWP.

Revised to