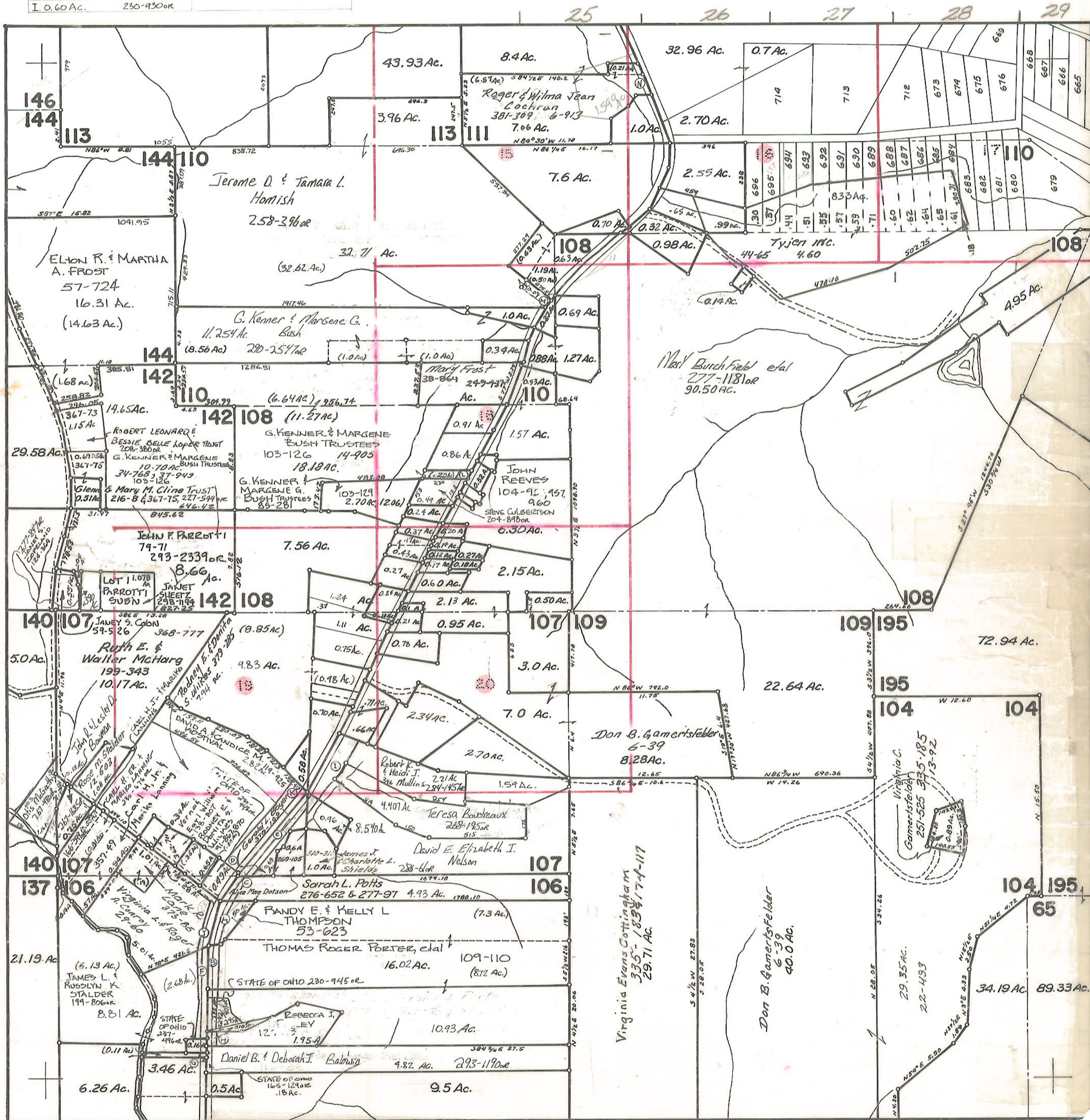


STATE OF OHIO TRACTS			
A. 0.20 Ac.	233-483 OR	J. 0.45 Ac.	233-489 OR
B. 0.42 Ac.	233-486 OR	K. 0.32 Ac.	233-627 OR
C. 0.07 Ac.	231-543 OR	L. 0.07 Ac.	235-224 OR
E. 0.45 Ac.	231-537 OR	N. 0.14 Ac.	247-385 OR
F. 0.53 Ac.	241-745 OR		
G. 0.02 Ac.	241-748 OR		
H. 0.10 Ac.	239-758 OR		
I. 0.60 Ac.	250-930 OR		

ATHENS COUNTY AUDITOR TAX PLAT
Approx. Scale 1" = 400' or 6 Chains

SEC. 23
Athens Twp.
T9 - R14



- 7- 0.53
- 8- 0.07
- 9- 0.93
- 10- 0.45
- 11- 0.59
- 12- 281 (32nd)
- 13- 45 (33rd)
- 14- 20 (34th)
- 15- 15 (39th)