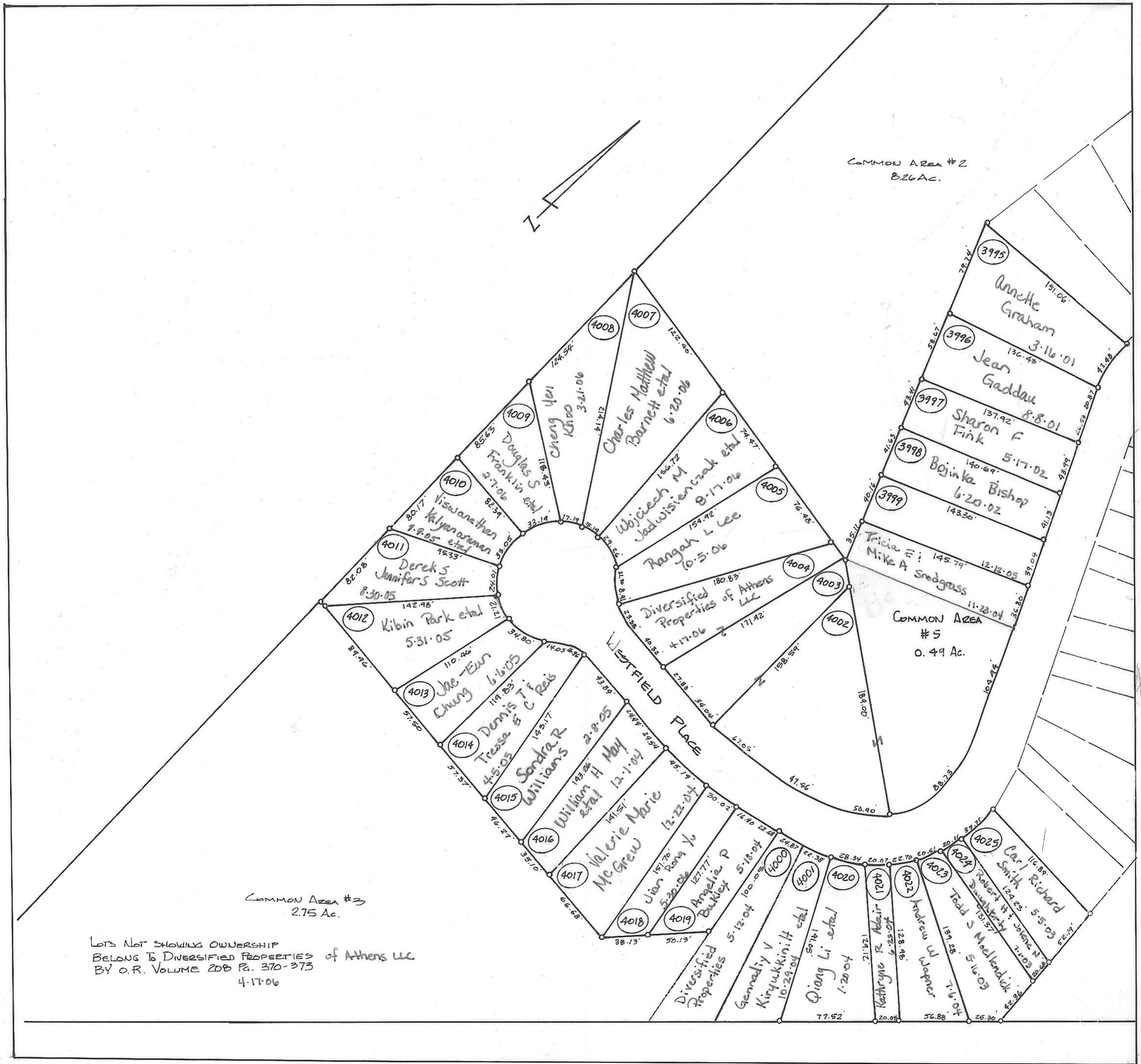


ATHENS COUNTY AUDITOR TAX PLAT

SCALE 1"=60'



COMMON AREA #2
8.26 AC.

COMMON AREA
#5
0.49 AC.

COMMON AREA #3
2.75 AC.

LOTS NOT SHOWING OWNERSHIP
BELONG TO DIVERSIFIED PROPERTIES of Athens LLC
BY O.R. VOLUME 200 Pgs. 370-373
4-17-06