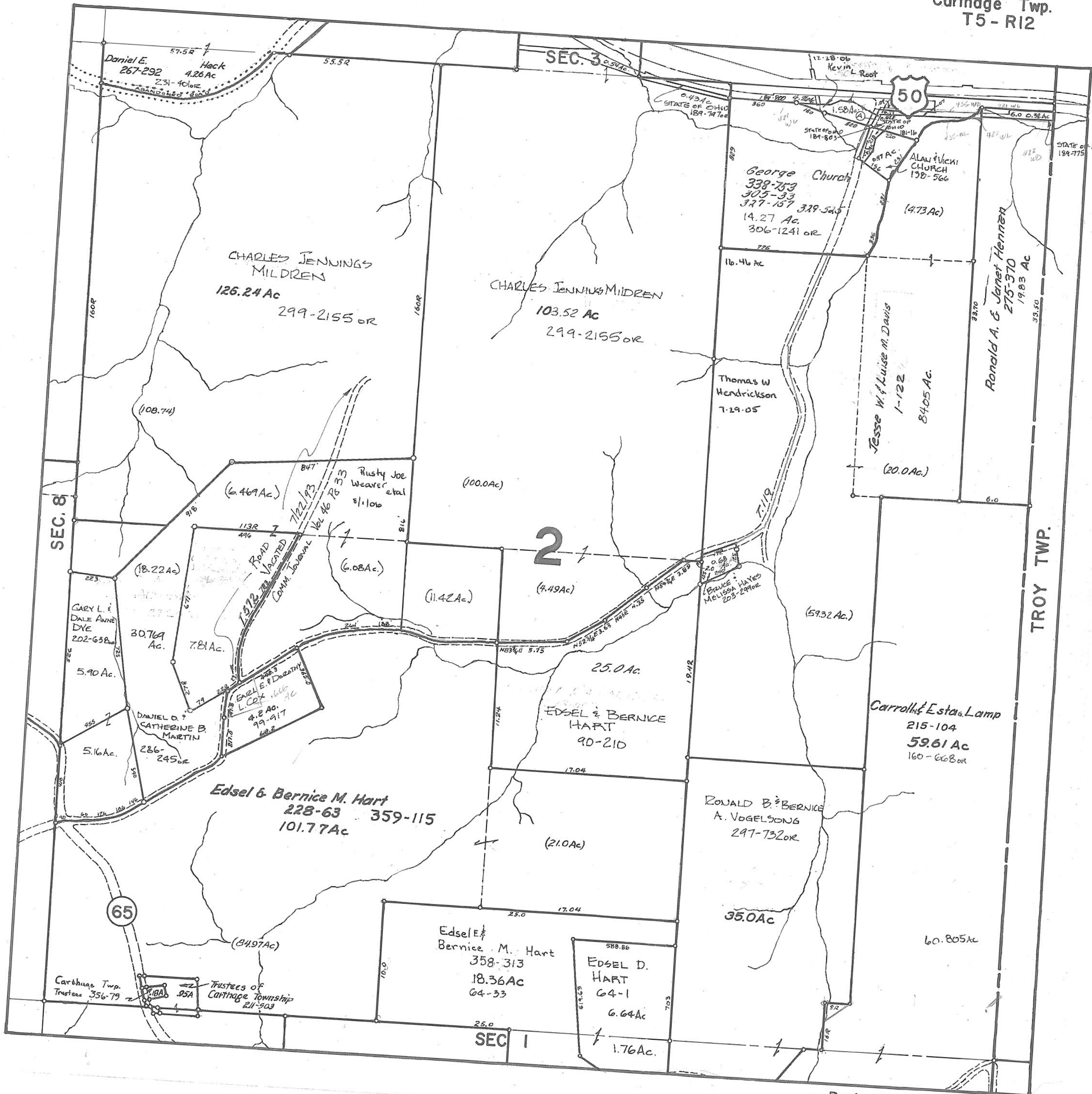


ATHENS COUNTY AUDITOR TAX PLAT  
Approx. Scale 1"=400' or 6 Chains

STATE OF OHIO 0.63Ac. 213-300or

**SEC. 2**  
Carthage Twp.  
T5-R12



Daniel E. Hack  
267-292 4.26 Ac  
231-401or

CHARLES JENNINGS MILDREN  
126.24 Ac  
299-2155 or

CHARLES JENNINGS MILDREN  
103.52 Ac  
299-2155 or

George Church  
338-759  
305-33  
377-157 339-545  
14.27 Ac  
306-1241 or

ALAN V. VICHI  
CHURCH  
130-566  
(4.73 Ac)

Ronald A. & Janet Hennessey  
275-370  
19.83 Ac

Jesse W. & Luise M. Davis  
1-122  
84.05 Ac.  
(20.0 Ac.)

Thomas W. Hendrickson  
7-29-05

(108.74)

Rusty Joe Weaver et al  
8/110a  
(6.08 Ac.)

(100.0 Ac)

2

(11.42 Ac.)

(4.49 Ac)

BRUCE & MELISSA HAYES  
203-291or

(59.32 Ac.)

SEC. 8

CARY L. & DALE ANNE DYE  
202-638or  
5.90 Ac.

(18.22 Ac.)  
30.769 Ac.

EARLE E. & DOROTHY L. COX  
4.8 Ac.  
99-917  
618.2

DANIEL D. & CATHERINE B. MARTIN  
286-245or

5.16 Ac.

Edsel & Bernice M. Hart  
228-63 359-115  
101.77 Ac

EDSEL & BERNICE HART  
90-210

(21.0 Ac)

RONALD B. & BERNICE A. VOGELSONG  
297-732or

35.0 Ac

Carroll & Estelle Lamp  
215-104  
59.61 Ac  
160-668or

60.805 Ac

65

Carthage Twp. Trustees  
356-79

Trustees of Carthage Township  
211-503

Edsel & Bernice M. Hart  
358-313  
18.36 Ac  
64-33

EDSEL D. HART  
64-1  
6.64 Ac  
1.76 Ac.

SEC. 1

TROY TWP.