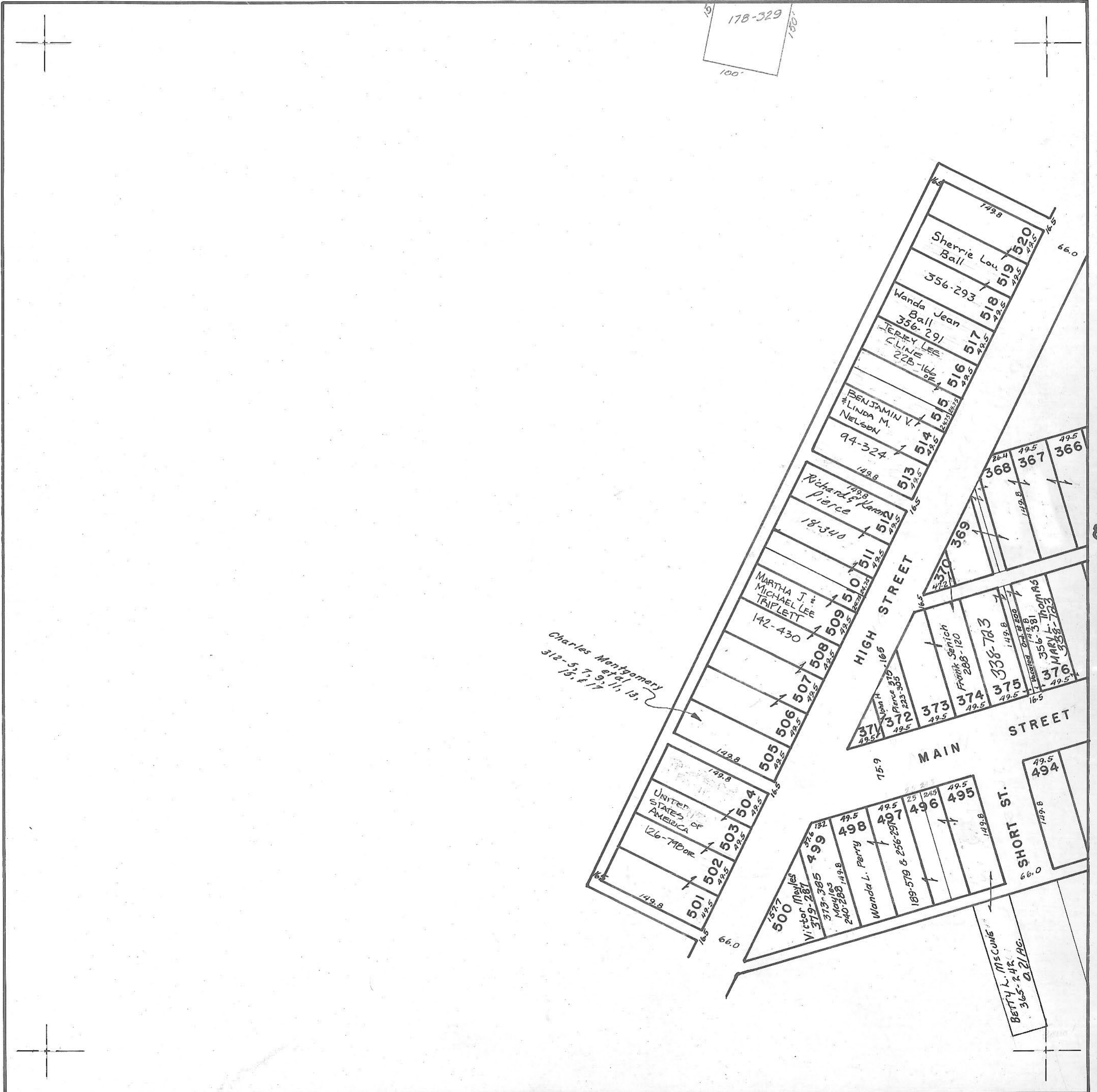


ATHENS COUNTY AUDITOR TAX PLAT
Scale 1"=100'

CHAUNCEY 7
NE. Q of SE. Q SEC. 26
Dover Twp.
TION-RI4W

100'
150'
.35 Ac.
178-329
100'



*Charles Montgomery
312-5, 7, 9, 11, 13,
15, & 17*