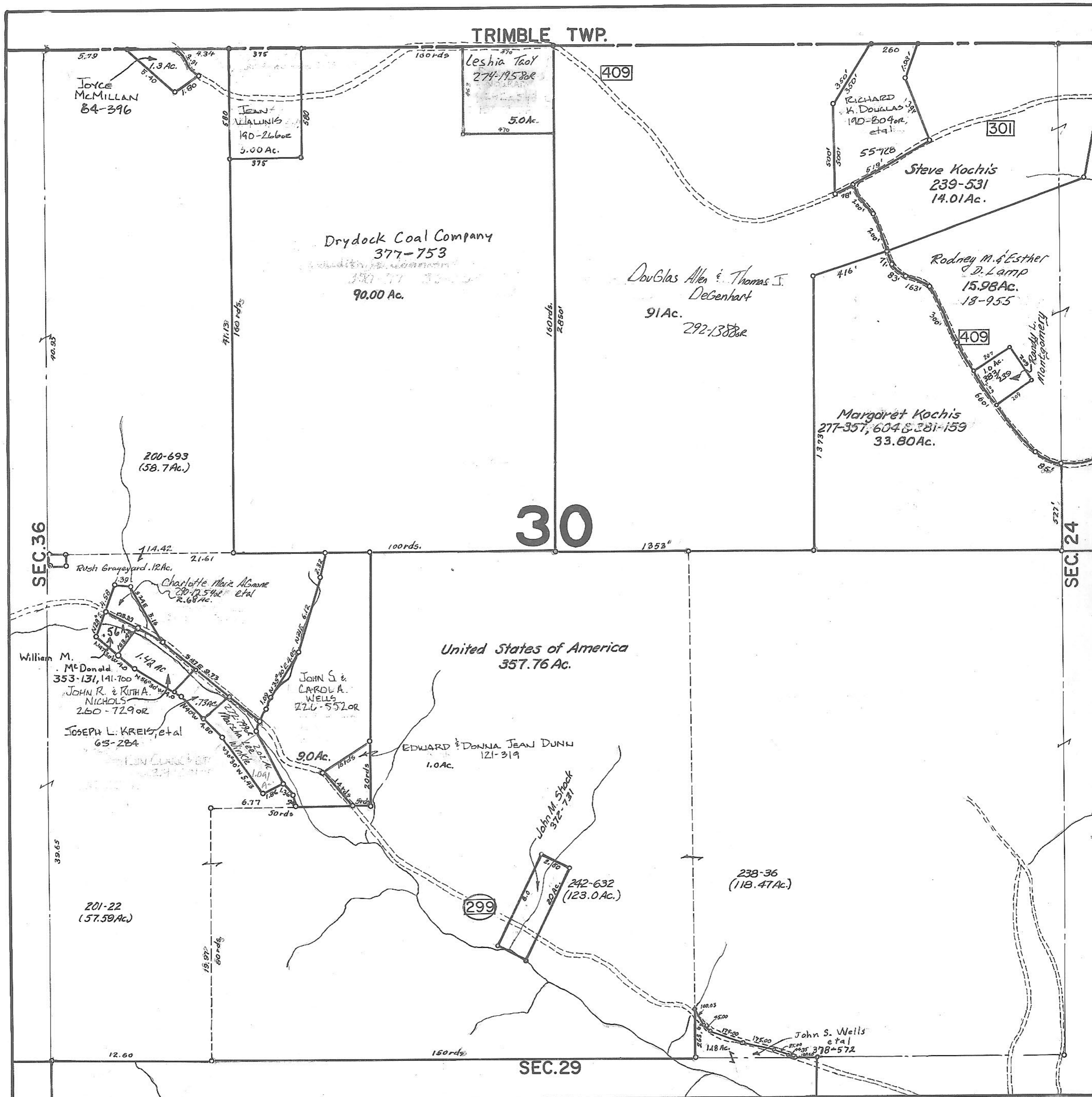


ATHENS COUNTY AUDITOR TAX PLAT  
Approx. Scale 1"=400' or 6 Chains

SEC. 30  
Dover Twp.  
T10-R14



Joyce  
McMillan  
84-396

Jean  
Walunas  
190-2660e  
3.00 Ac.

Leshia Tool  
274-19580e  
5.0 Ac.

RICHARD  
K. DOUGLAS  
190-8040e  
et al.

Steve Koch's  
239-531  
14.01 Ac.

Drydock Coal Company  
377-753  
90.00 Ac.

Douglas Allen & Thomas J.  
DeGehart  
91 Ac.  
292-1388e

Rodney M. & Esther  
D. Lamp  
15.98 Ac.  
18-955

Margaret Koch's  
277-357, 604 & 281-159  
33.80 Ac.

200-693  
(58.7 Ac.)

30

William M.  
McDonald  
353-131, 141-700  
1.42 Ac.

JOHN S. &  
CAROL A.  
WELLS  
276-5520r

United States of America  
357.76 Ac.

JOSEPH L. KREIS, et al  
65-284

EDWARD & DONNA JEAN DUNN  
1.0 Ac.  
121-319

201-22  
(57.59 Ac.)

John M. Shook  
372-731  
20 Ac.  
242-632  
(123.0 Ac.)

238-36  
(118.47 Ac.)

John S. Wells  
et al  
378-572  
1.18 Ac.

SEC. 29