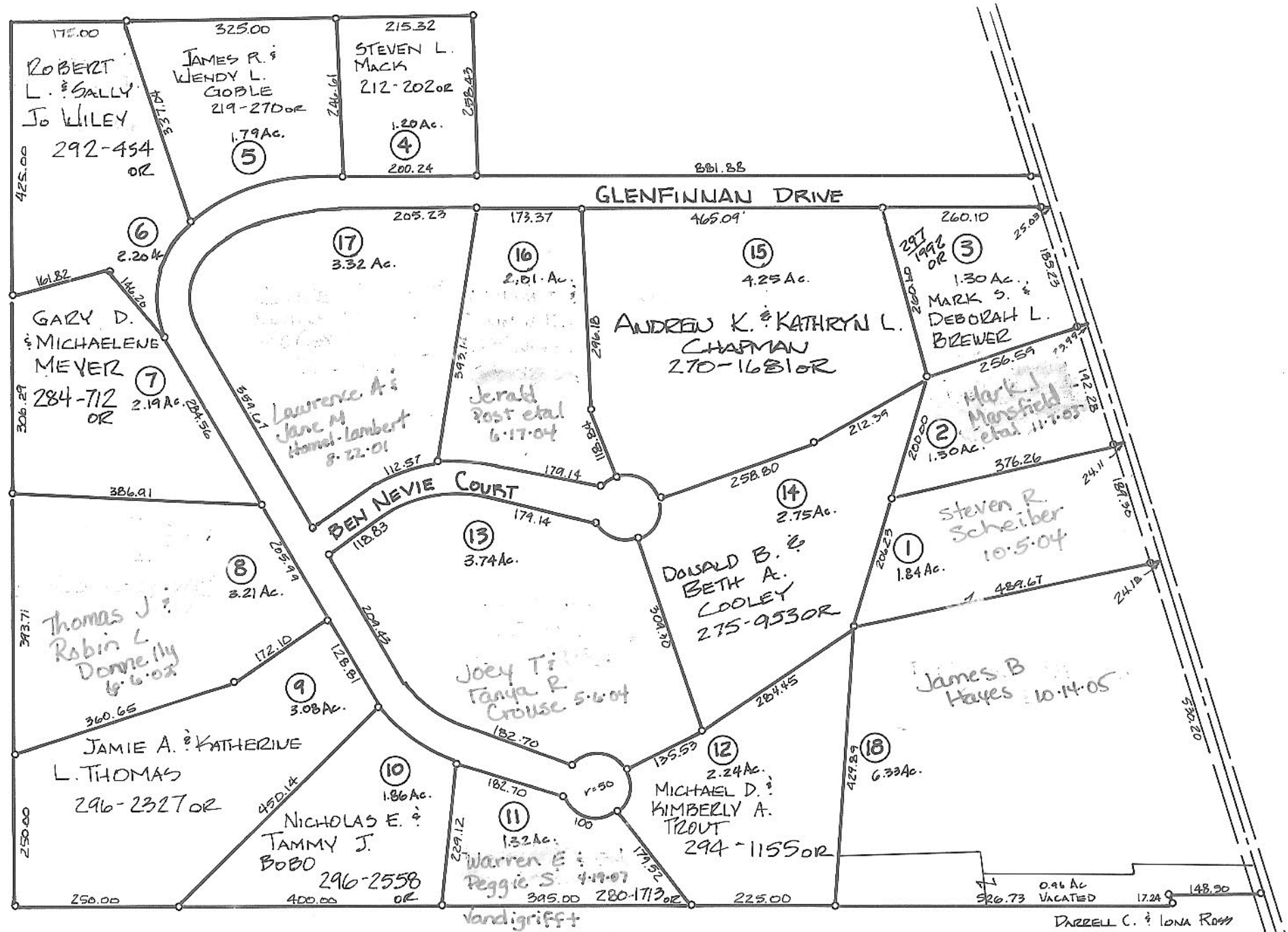


ATHENS COUNTY AUDITOR TAX PLAT
SCALE 1"=200'

SCOTTISH HEIGHTS
ESTATES

SEC 17
LEE TWP.
T10 R 15



ALL LOTS NOT SHOWING OWNERSHIP
ARE THE PROPERTY OF ATHENS COUNTY BUILDERS INC.
DEED REF 167-233 OR
PLAT BOOK 10 PAGE 126

5.69 Ac. 12/W - 220-891 OR