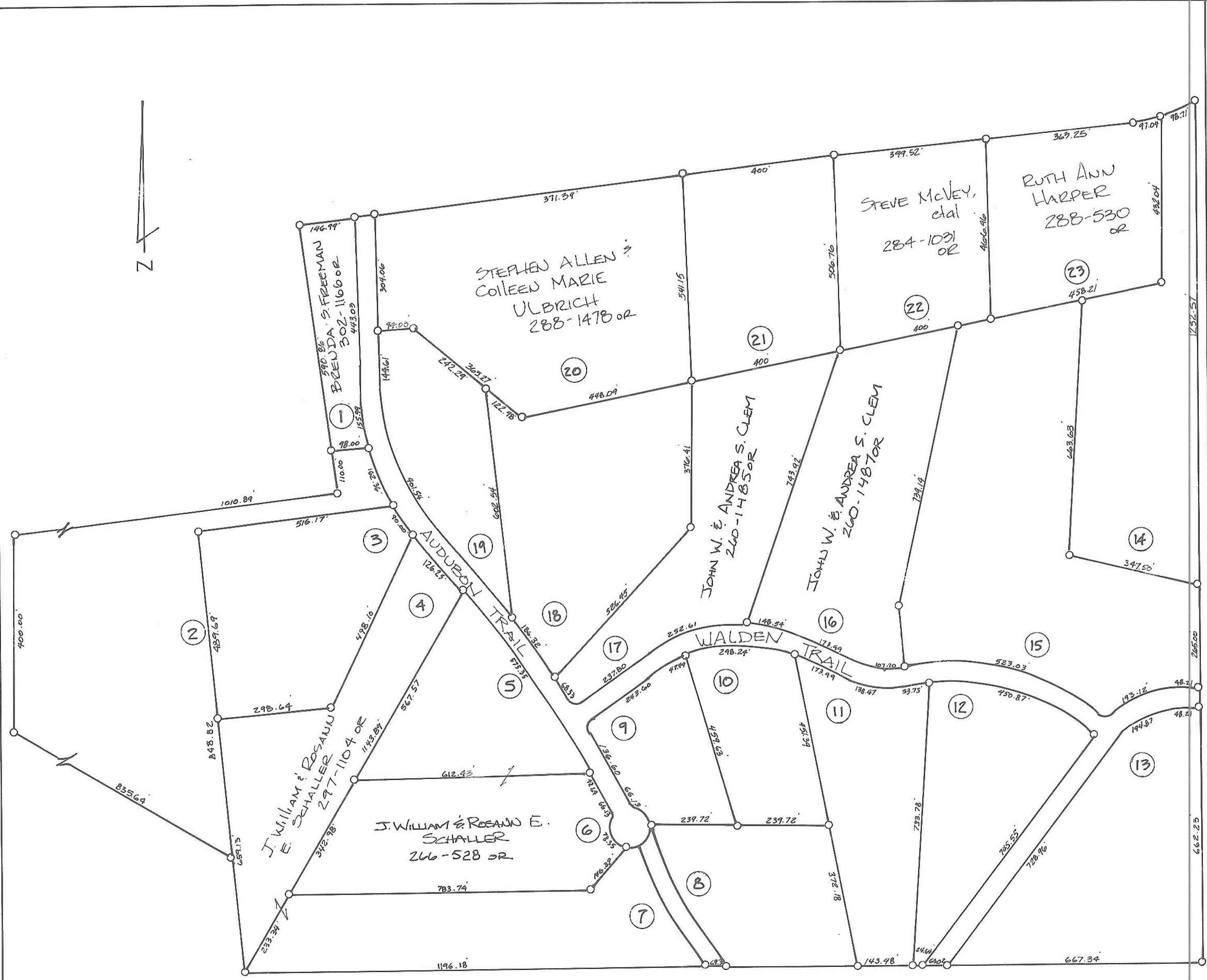


ATHENS COUNTY AUDITOR TAX PLAT

SCALE 1"=200'



J. William & Rosann E. Schaller  
 297-1104 OR  
 1143-89

STEPHEN ALLEN &  
 COLLEEN MARIE  
 ULBRICH  
 288-1478 OR

STEVE McVEY,  
 et al  
 284-1031  
 OR

RUTH ANN  
 HARPER  
 288-530  
 OR

JOHN W. & ANDREA S. CLEM  
 260-1485 OR

JOHN W. & ANDREA S. CLEM  
 260-1487 OR

NOTE: LOTS NOT SHOWING OWNERSHIP  
 BELONG TO PAUL F. & GEEI PLATZ  
 BY O.R. VOLUME 227 PAGE 286