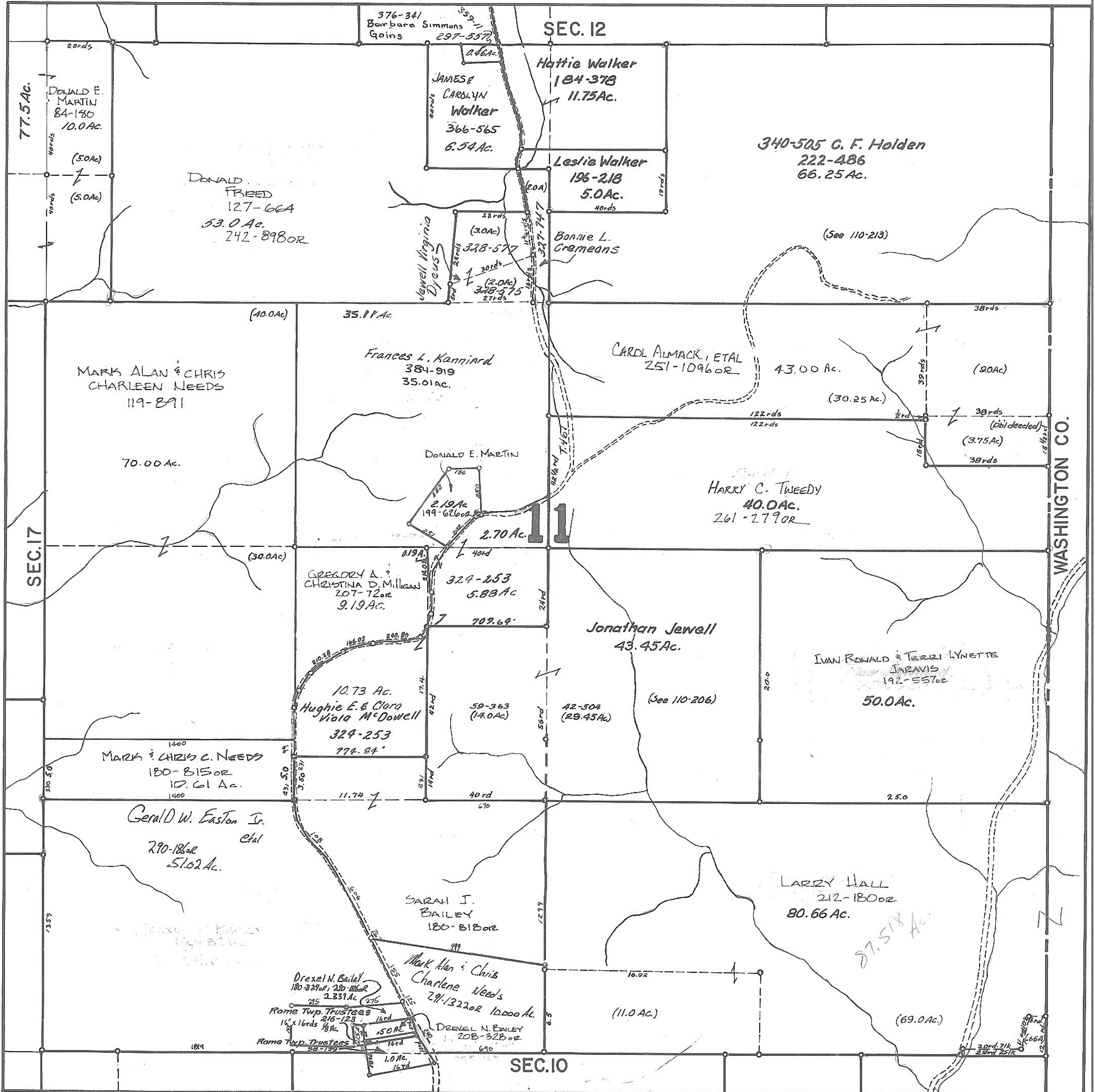


ATHENS COUNTY AUDITOR TAX PLAT  
Approx. Scale 1" = 400' or 6 Chains

SEC. 11  
Rome Twp.  
T6 - R12



77.5 Ac.

SEC. 12

Hattie Walker  
184-378  
11.75 Ac.

340-505 C. F. Holden  
222-486  
66.25 Ac.

DONALD FREED  
127-66A  
53.0 Ac.  
242-898OR

JAMES & CAROLYN Walker  
366-565  
6.54 Ac.

Leslie Walker  
196-218  
5.0 Ac.

Bonnie L. Cremeans

376-341 Barbara Simmons Goins  
297-557

Jewell Virginia Dycus

Frances L. Kanniard  
384-919  
35.01 Ac.

CARDL ALMACK, ETAL  
251-1096OR

MARK ALAN & CHRIS CHARLEEN NEEDS  
119-891

HARRY C. TWEEDY  
40.0 Ac.  
261-279OR

SEC. 17

DONALD E. MARTIN

GREGORY A. & CHRISTINA D. MILLIGAN  
207-72OR  
9.19 Ac.

324-253  
5.88 Ac.

Jonathan Jewell  
43.45 Ac.

IVAN RONALD & TERIZI LYNETTE JARAVIS  
192-557OR  
50.0 Ac.

Hughie E. & Clara Viola McDowell  
324-253  
774.84'

MARK & CHRIS C. NEEDS  
180-B15OR  
10.61 Ac.

Gerald W. Easton Jr. et al  
290-186OR  
51.62 Ac.

SARAH J. BAILEY  
186-818OR

LARRY HALL  
212-180OR  
80.66 Ac.

Drexel N. Bailey  
180-229OR, 210-186OR  
2.331 Ac.

Mark Alan & Chris Charlene Needs  
291-1322OR  
10.00 Ac.

Rome Twp. Trustees  
216-123  
1.0 Ac.

DREXEL N. BAILEY  
208-328OR

SEC. 10

WASHINGTON CO.

Revised to