

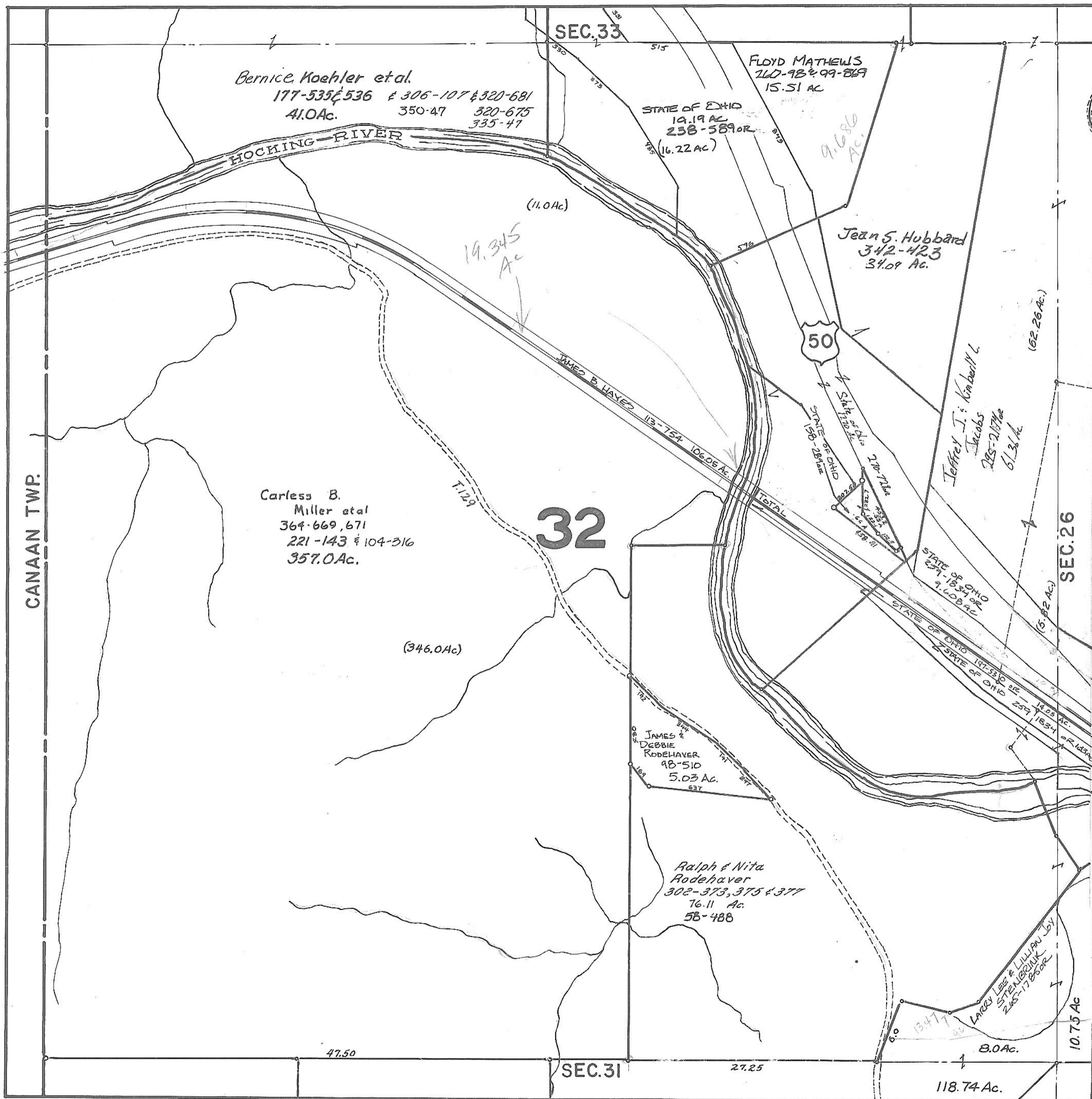
ATHENS COUNTY AUDITOR TAX PLAT

Approx. Scale 1"=400' or 6 Chains

SEC. 32

Rome Twp.

T6-R12



Bernice Koehler et al.
177-535 & 536 & 306-107 & 320-681
41.0Ac. 350-47 320-675
335-47

FLOYD MATHEWS
210-98 & 99-869
15.51 AC

STATE OF OHIO
19.19 AC
238-589 OR
(16.22 AC)

Jean S. Hubbard
342-423
34.09 Ac.

Carless B.
Miller et al
364-669, 671
221-143 & 104-316
357.0Ac.

32

JAMES &
DEBBIE
RODEHAVER
98-510
5.03 AC.

Ralph & Nita
Rodehaver
302-373, 375 & 377
76.11 Ac.
58-488

LARRY LEE & LILLIAN JOY
STENGBRINK
245-1785 OR

118.74 Ac.

Revised to