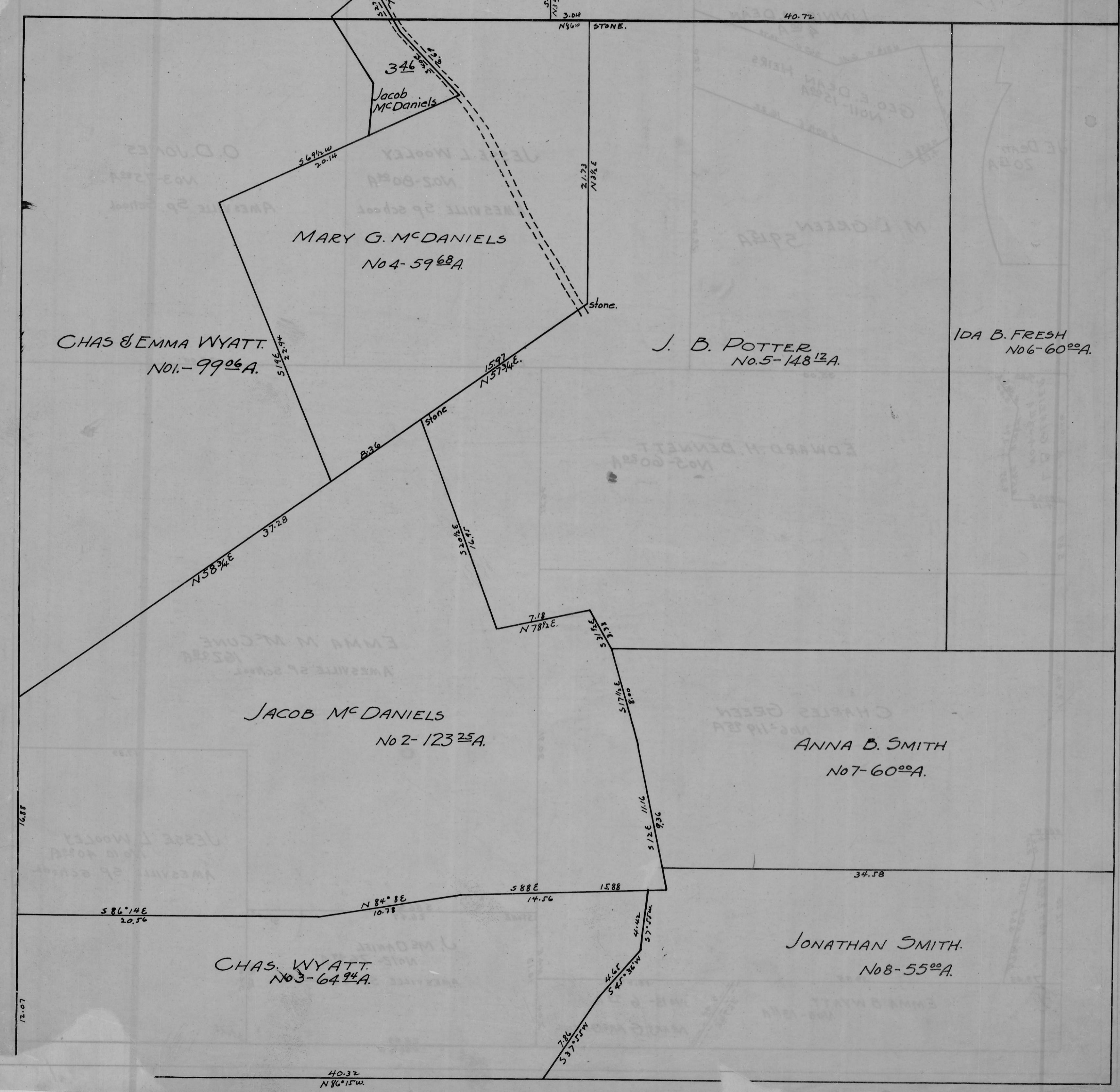


AMES TWP. - SEC. 1 - TOWN, 6 - RANGE, 15

SCALE 20 RODS TO 1 INCH.



16.88
12.07

40.32
N86°15'W

AMES TWP. - SEC. 1 - TOWN, 6 - RANGE, 15
SCALE 20 RODS TO 1 INCH.
No 13-6⁷²A
STONE
3.04
N86°W
40.72
STONE.
346
Jacob
McDaniels
569¹²W
70.14
2.173
N7¹/₂E
STONE.
M. G. McDANIELS
No 4-59⁶⁸A
CHAS & EMMA WYATT.
No 1-99⁰⁶A
519E
22.94
836
stone
15.87
N57³/₄E
J. B. POTTER
No 5-148¹²A
IDA B. FRESH
No 6-60⁰⁰A
7-18
N78¹/₂E
517¹/₂E
8.00
ANNA B. SMITH
No 7-60⁰⁰A
512E
11.16
936
34.58
15.88
588E
14.56
N84°8E
10.78
586°14E
20.56
12.07
CHAS. WYATT.
No 3-64⁹⁴A
4.65
S45°36'W
44.62
57.57W
7.86
537°55'W
40.32
N86°15'W