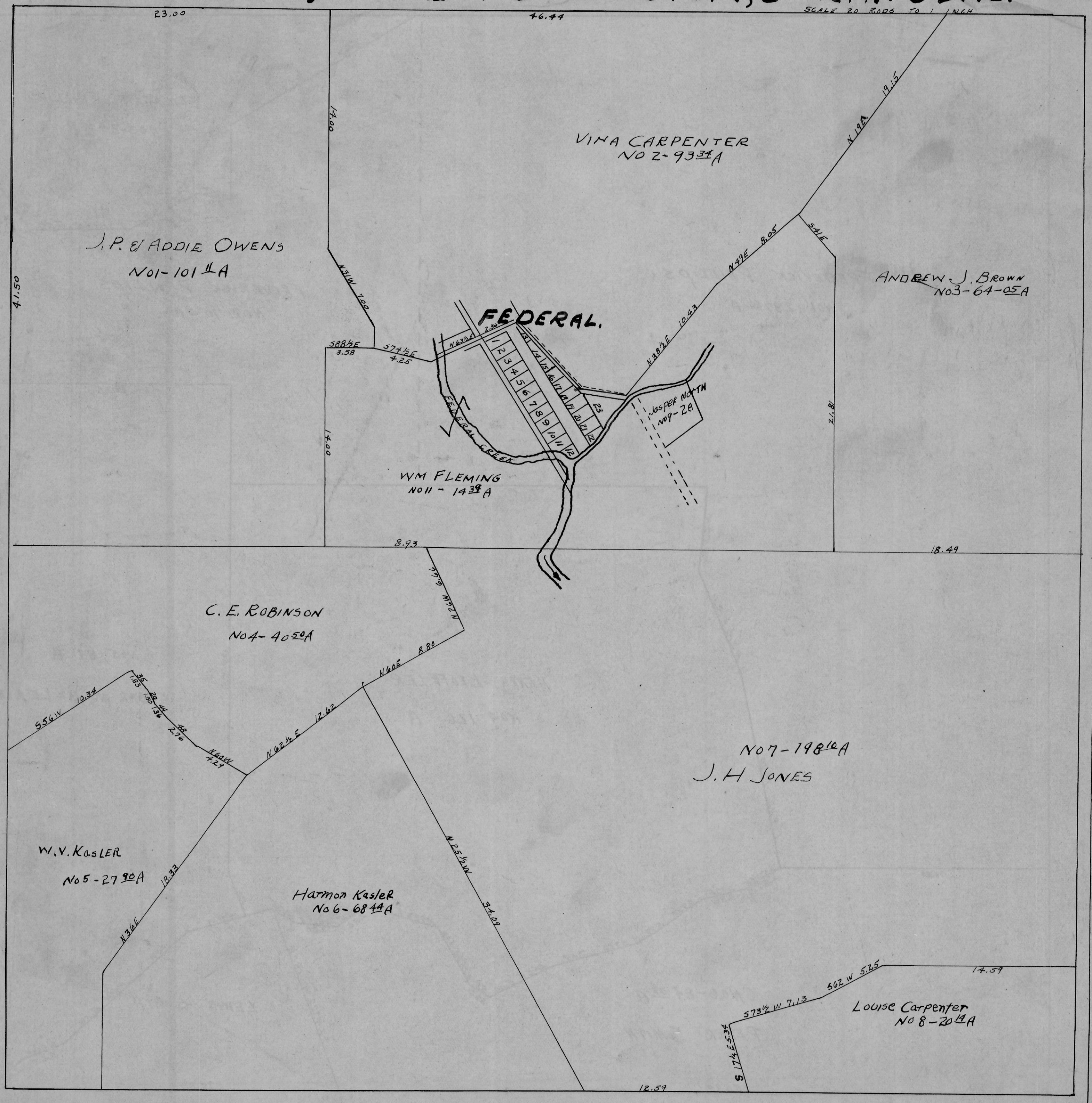


AMES TWP. — SEC. 18 — TOWN, 6 — RANGE. 13.

E.A.

SCALE 20 RODS TO 1 INCH



J.P. & ADDIE OWENS  
NO 1-101 1/2 A

VINA CARPENTER  
NO 2-93 3/4 A

ANDREW J. BROWN  
NO 3-64-05 A

FEDERAL.

WM FLEMING  
NO 11-14 3/8 A

JOSPER NORTH  
NO 7-2 A

C. E. ROBINSON  
NO 4-40 5/8 A

NO 7-198 1/2 A  
J. H. JONES

W. V. KASLER  
NO 5-27 9/10 A

HARMON KASLER  
NO 6-68 1/4 A

LOUISE CARPENTER  
NO 8-20 1/2 A