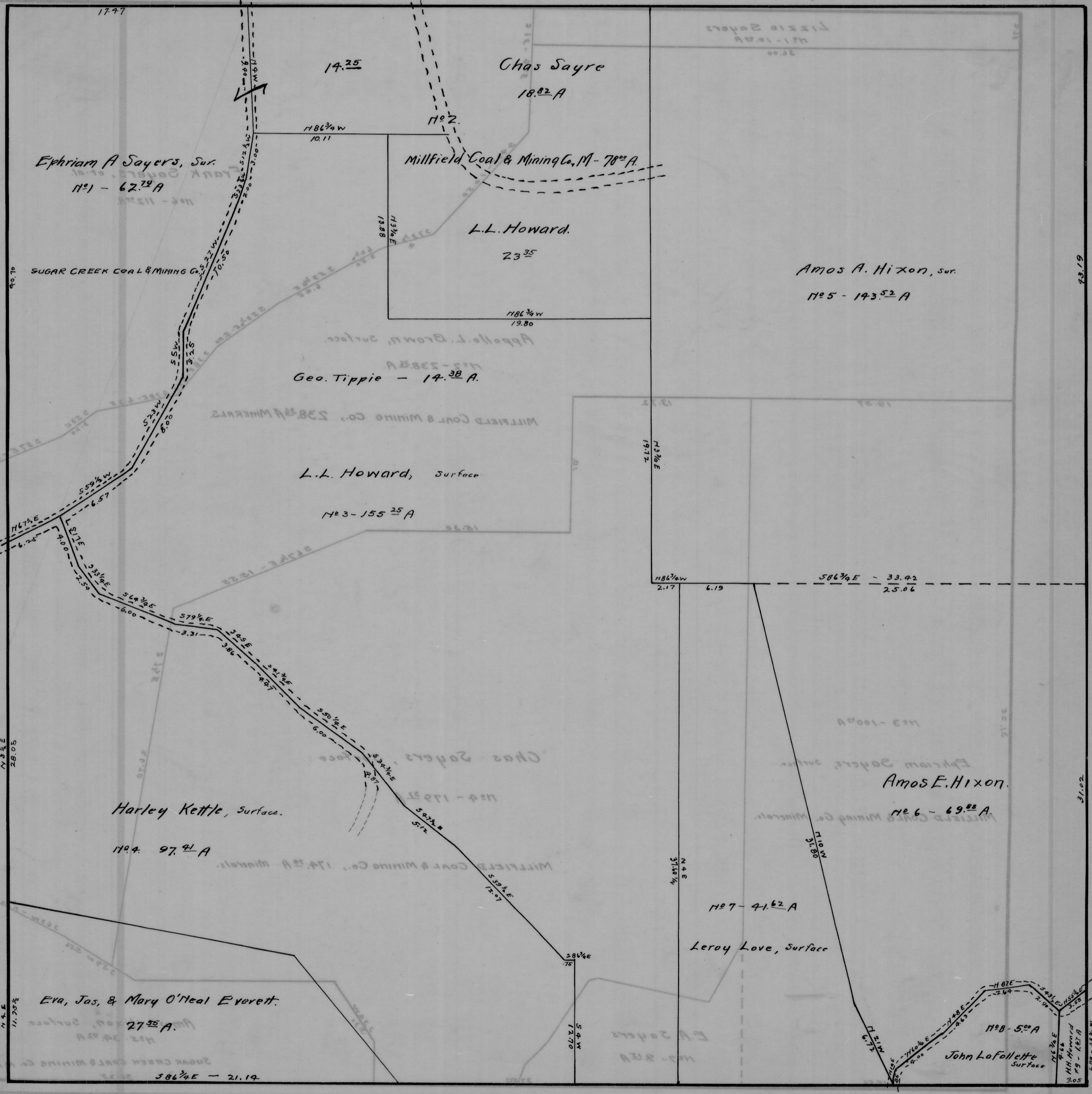


AMES TWP. — SEC. 34 — TOWN, 6 — RANGE, 13.

SCALE - 20 RODS = 1 IN.



Ephriam A. Sayers, Sur.
No. 1 - 62.79 A

Chas. Sayre
18.82 A

Millfield Coal & Mining Co., M - 78.00 A

L.L. Howard.
23.35

Amos A. Hixon, Sur.
No. 5 - 143.52 A

Geo. Tippie - 14.38 A

L.L. Howard, Surface
No. 3 - 155.25 A

Harley Kettle, Surface.
No. 4 - 97.41 A

Eva, Jas. & Mary O'Neal Everett.
27.55 A

No. 7 - 41.62 A

Leroy Love, Surface

No. 8 - 5.00 A
John LaFollette
Surface

93.19

31.02

3.05