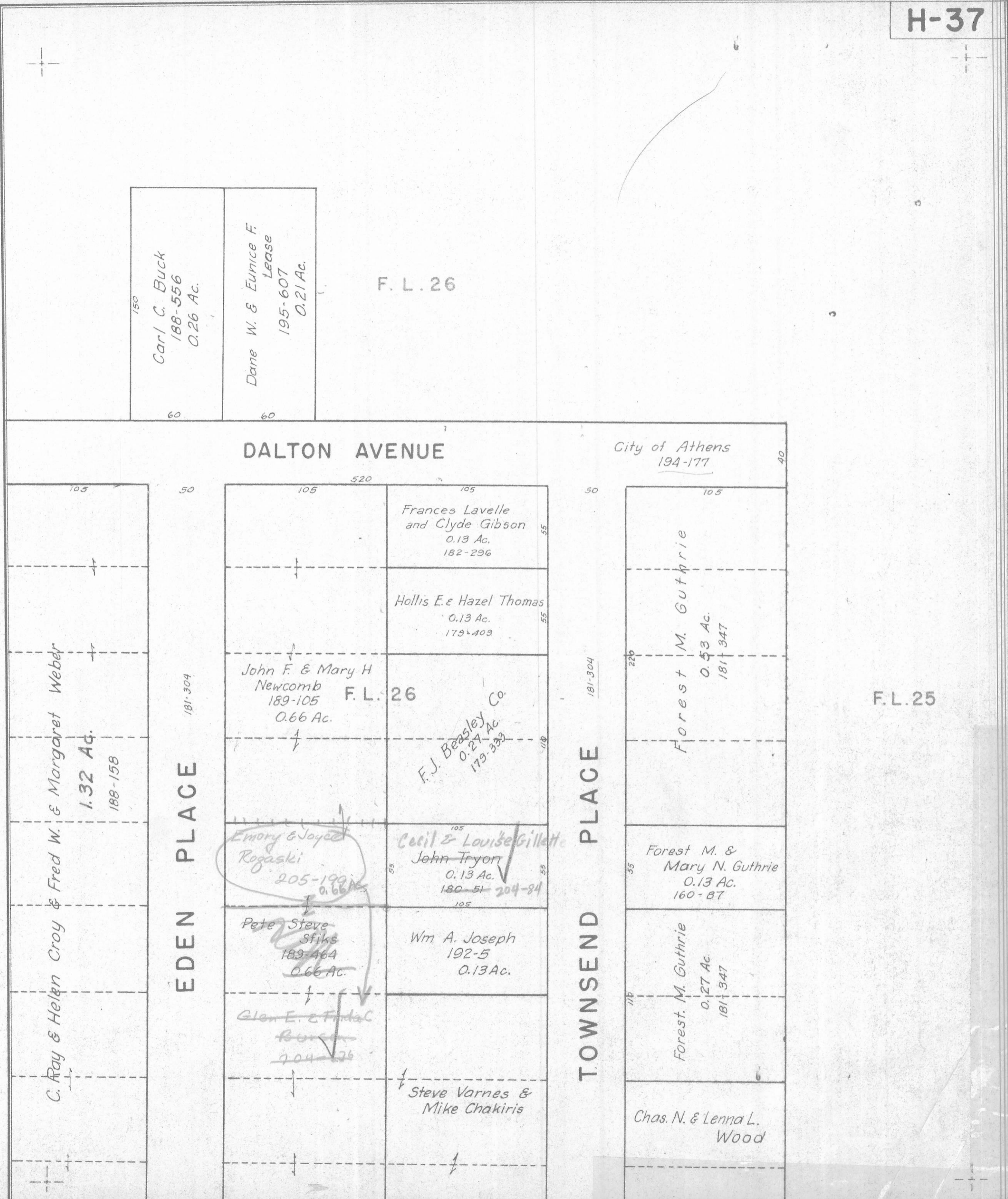


H-37



150
 Carl C. Buck
 188-556
 0.26 Ac.
 60

Dane W. & Eunice F.
 Lease
 195-607
 0.21 Ac.
 60

F. L. 26

DALTON AVENUE

City of Athens
194-177

105
 50
 181-304
 EDEN PLACE
 105
 50
 181-304
 C. Ray & Helen Croy & Fred W. & Margaret Weber
 1.32 Ac.
 188-158

105 520 105
 Frances Lavelle and Clyde Gibson
 0.13 Ac.
 182-296

Hollis E. & Hazel Thomas
 0.13 Ac.
 179-409

John F. & Mary H. Newcomb
 189-105
 0.66 Ac.
 F. L. 26

F. J. Beasley Co.
 0.27 Ac.
 179-333

Emory & Joyced Rogaski
 205-190
 0.66 Ac.

Cecil & Louise Gillett
 John Tryon
 0.13 Ac.
 180-51-204-84

Pete Steve Sfikis
 189-464
 0.66 Ac.

Wm A. Joseph
 192-5
 0.13 Ac.

Glen E. & Fida C. Burch
 204-176

Steve Varnes & Mike Chakiris

50
 181-304
 TOWNSEND PLACE
 50
 181-304
 105
 40
 Forest M. Guthrie
 0.53 Ac.
 181-347

226
 Forest M. & Mary N. Guthrie
 0.13 Ac.
 160-87

55
 Forest M. Guthrie
 0.27 Ac.
 181-347

776
 Chas. N. & Lenna L. Wood

F. L. 25