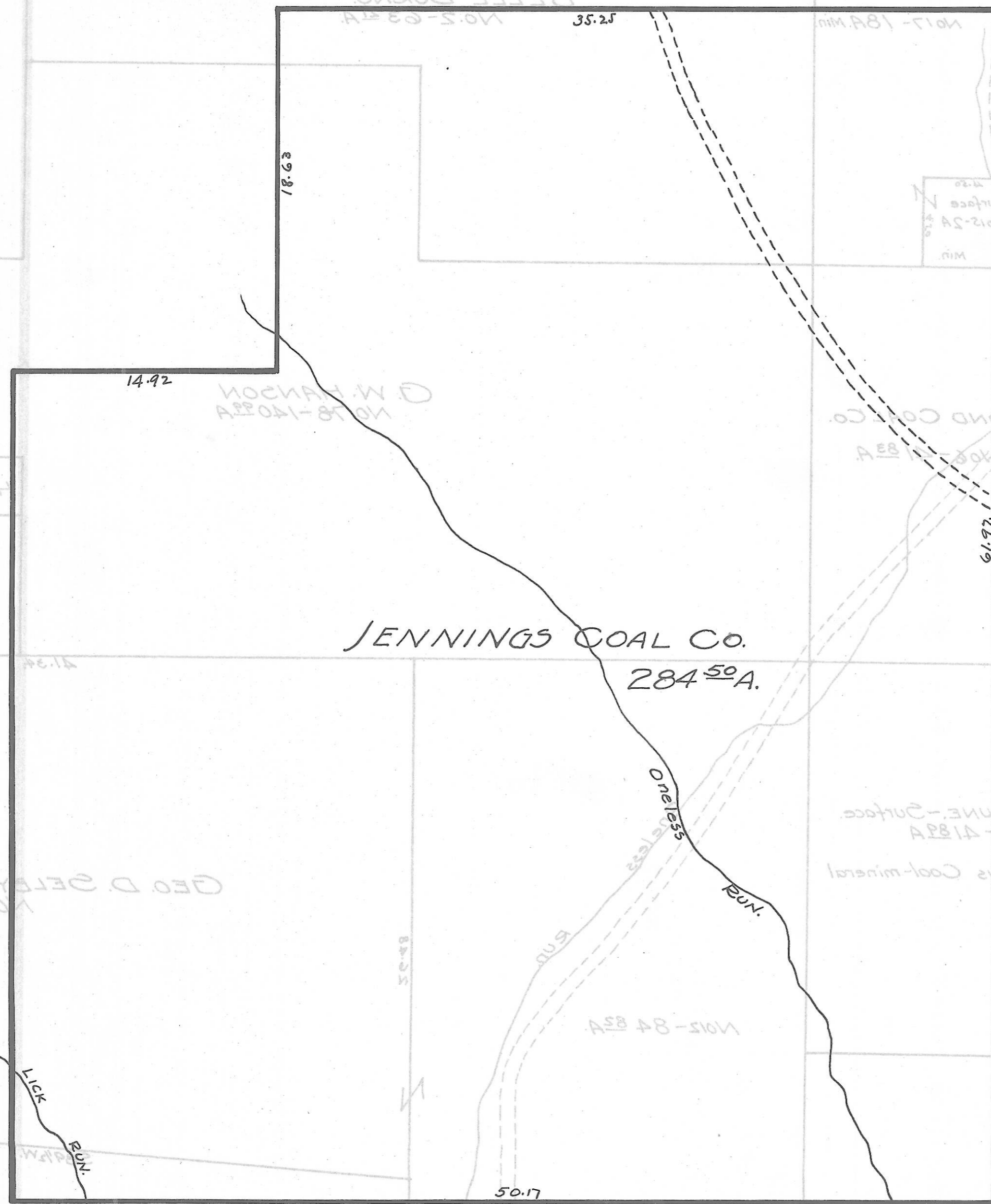


BERN TWP. - FRAC. 36 - SEC. 15 & 21 - TOWN, 7 - RANGE, 12.



JENNINGS COAL CO.
284⁵⁰ A.

Oreless Run

Lick Run

GEO. A. HARRIS
No. 2-42 48A

G. W. HANSON
No. 78-140 22A

THE BLACK DIAMOND COAL CO.
No. 85-85A

JOS. SHARR
No. 1-20 22A

H. CROSTON
322 2A

No. 16
7 22A

GEO. D. SELBY
No. 13-106 22A

BLACK DIAMOND COAL CO.
No. 14-62 22A

HOWARD
CROSTON
No. 17-184 Min

JOHN S. McCUNE - Surface
No. 10-41 22A
DIRE & HARRIS Coal-mineral

Surface
No. 12-22
Min

L. A. McCUNE
No. 11-42 22A

FRAC. 23

FRAC. 22
FRAC. 17

FRAC. 17
FRAC. 18

11.05

35.25

14.92

18.63

61.77