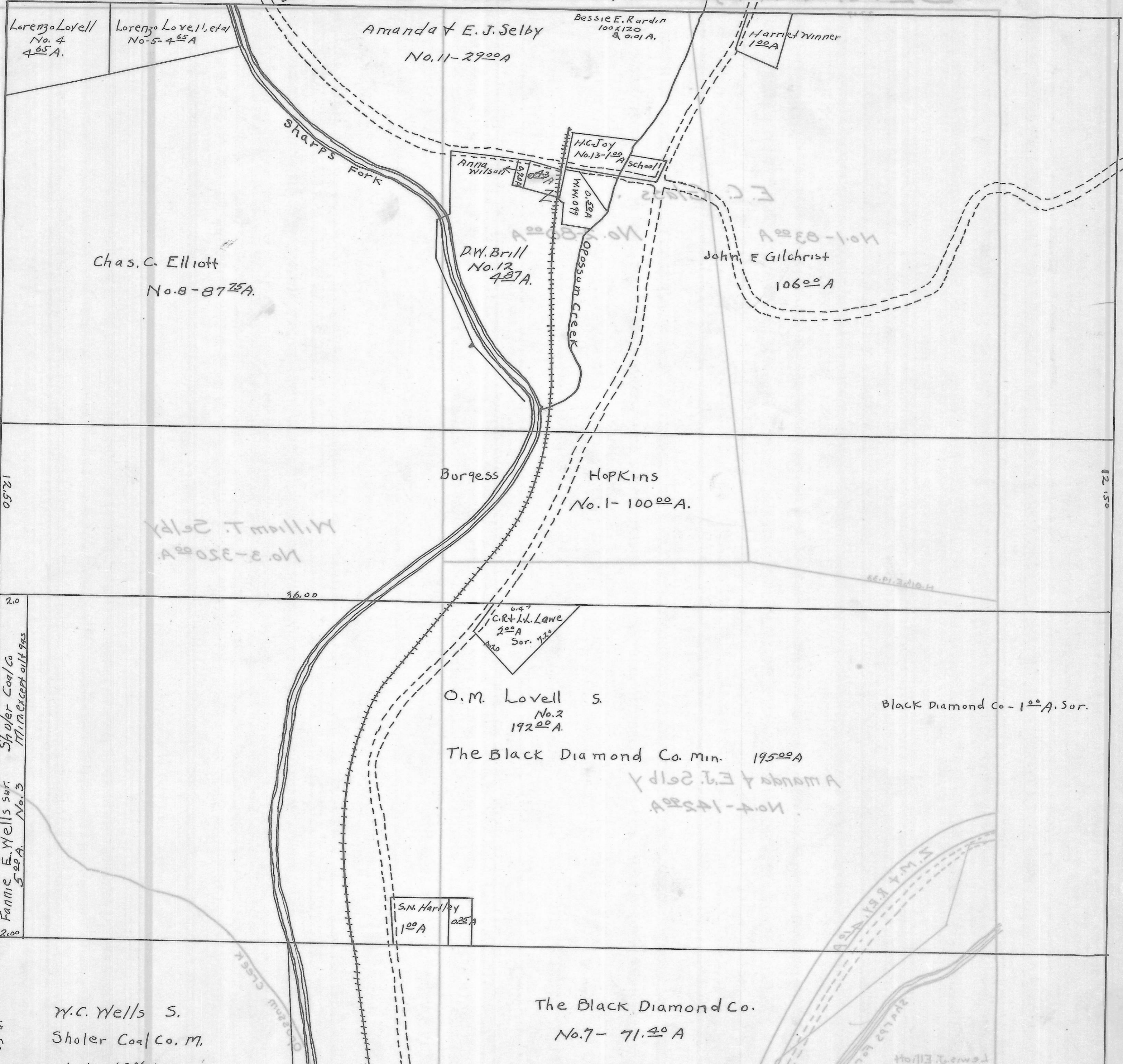


BERN TWP. SEC 29 - TOWN 7 - RANGE 12. 20 ROOS = 11 N.



Lorenzo Lovell
No. 4
4.65 A.

Lorenzo Lovell, et al
No. 5-4.65 A

Amanda & E. J. Selby
No. 11-29.00 A

Bessie E. Rardin
100 x 120
& 0.01 A.

Harriet Winner
1.20 A

Chas. C. Elliott
No. 8-87.25 A.

D.W. Brill
No. 12
4.87 A.

Anna Wilsont
0.23 A

H.C. Joy
No. 13-1.00
School

John E Gilchrist
106.00 A

12.50

12.50

William T. Selby
No. 3-350.00 A

Burgess

Hopkins
No. 1-100.00 A.

2.0

36.00

C. R. L. Lawe
2.00 A
Sor. 7.20

O. M. Lovell S.
No. 2
192.00 A.

Black Diamond Co - 1.00 A. Sor.

The Black Diamond Co. min. 195.00 A

Amanda & E. J. Selby
No. 4-142.00 A

Shuler Coal Co
M.M. except oil & gas

Fannie E. Wells sor.
No. 3
5.00 A.

S.N. Hartley
1.00 A
0.25 A

W.C. Wells S.
Shuler Coal Co. M.

The Black Diamond Co.
No. 7-71.40 A

12.50