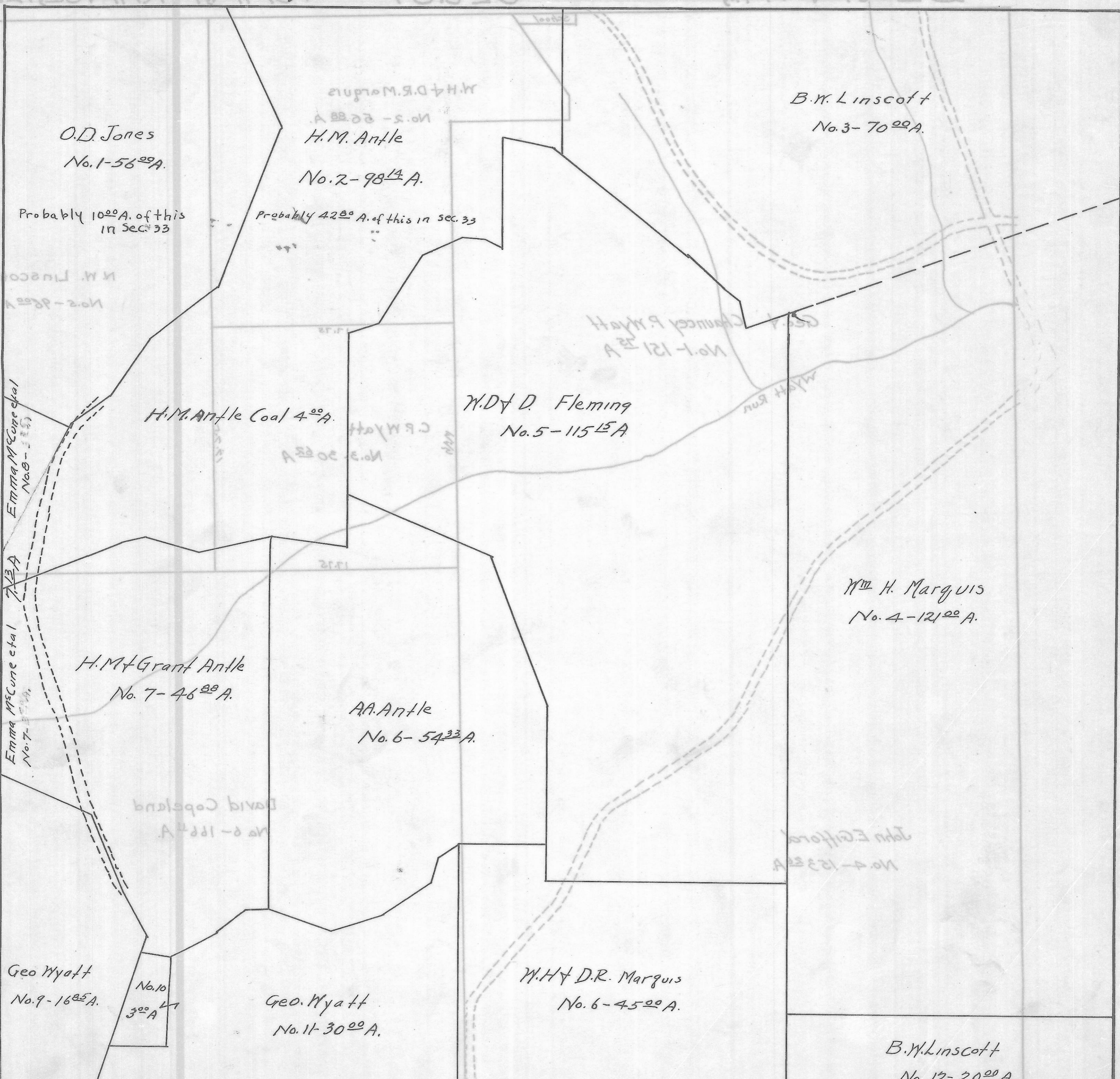


BERN TWP. — SEC. 32 — TOWN, 7-RANGE, 12.

20 Rods = 1/4 in.



O.D. Jones  
No. 1-56<sup>00</sup>A.

Probably 10<sup>00</sup>A. of this  
in Sec. 33

H.M. Antle  
No. 2-98<sup>14</sup>A.

Probably 42<sup>00</sup>A. of this in Sec. 33

B.W. Linscott  
No. 3-70<sup>00</sup>A.

H.M. Antle Coal 4<sup>00</sup>A.

W.D. & D. Fleming  
No. 5-115<sup>15</sup>A.

H.M. & Grant Antle  
No. 7-46<sup>00</sup>A.

AA. Antle  
No. 6-54<sup>33</sup>A.

W.H. Marguis  
No. 4-121<sup>00</sup>A.

Geo Wyatt  
No. 9-16<sup>85</sup>A.

No. 10  
3<sup>00</sup>A.

Geo. Wyatt  
No. 11-30<sup>00</sup>A.

W.H. & D.R. Marguis  
No. 6-45<sup>00</sup>A.

B.W. Linscott  
No. 12-20<sup>00</sup>A.