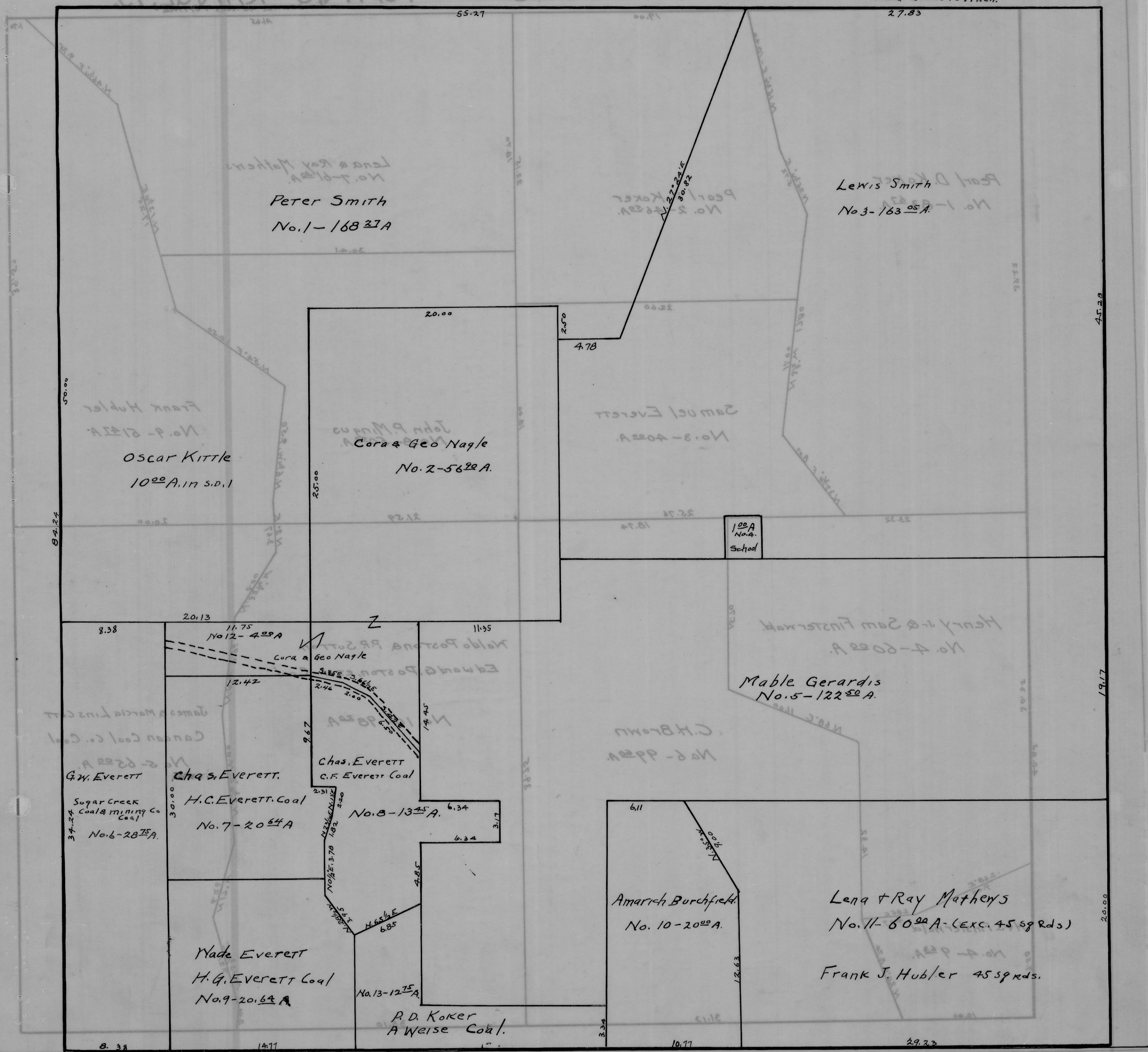


CANAAN TWP. - SEC. 24 - TOWN, 5 - RANGE, 13.

SCALE 20 RODS TO 1 INCH.



Peter Smith
No. 1-168 27 A

Lewis Smith
No. 3-163 05 A

Oscar Kittle
1000 A. in S.D. 1

Cora & Geo Nagle
No. 2-56 90 A

100 A
No. 4
School

Mable Gerardis
No. 5-122 50 A

G.W. EVERETT
Sugar Creek
Coal & Mining Co
Coal
No. 6-20 75 A

Chas. EVERETT
H.C. EVERETT Coal
No. 7-20 64 A

Chas. EVERETT
C.F. EVERETT Coal
No. 8-13 5 A

Wade EVERETT
H.G. EVERETT Coal
No. 9-20 64 A

R.D. Koker
A Weise Coal
No. 13-12 75 A

Amarish Burchfield
No. 10-2000 A

Lena & Ray Mathews
No. 11-60 00 A - (exc. 45 sq rods)

Frank J. Hubler 45 sq rods.