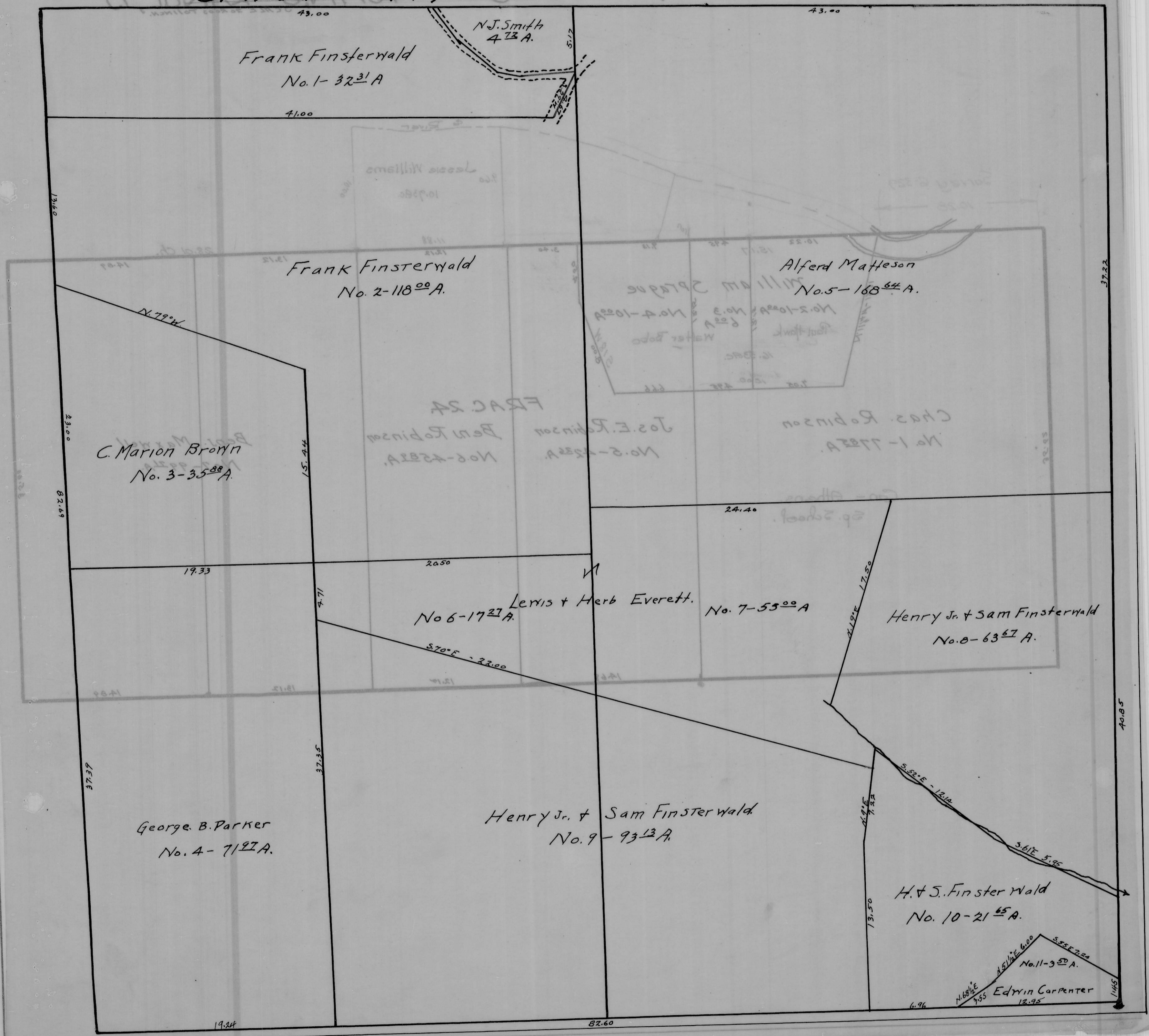


CANAAN TWP, SEC. 29 TOWN, 5 - RANGE, 13.

SCALE 20 FEET TO 1 INCH.



Frank Finsterwald  
No. 1-32<sup>31</sup> A

N.J. Smith  
473 A.

Frank Finsterwald  
No. 2-118<sup>00</sup> A.

Alfred Matteson  
No. 5-168<sup>64</sup> A.

C. Marion Brown  
No. 3-35<sup>88</sup> A.

No. 6-17<sup>27</sup> A.

Lewis & Herb Everett.

No. 7-55<sup>00</sup> A.

Henry Jr. & Sam Finsterwald  
No. 8-63<sup>67</sup> A.

George B. Parker  
No. 4-71<sup>91</sup> A.

Henry Jr. & Sam Finsterwald  
No. 9-93<sup>13</sup> A.

H. & S. Finsterwald  
No. 10-21<sup>65</sup> A.

Edwin Carpenter  
No. 11-3<sup>50</sup> A.