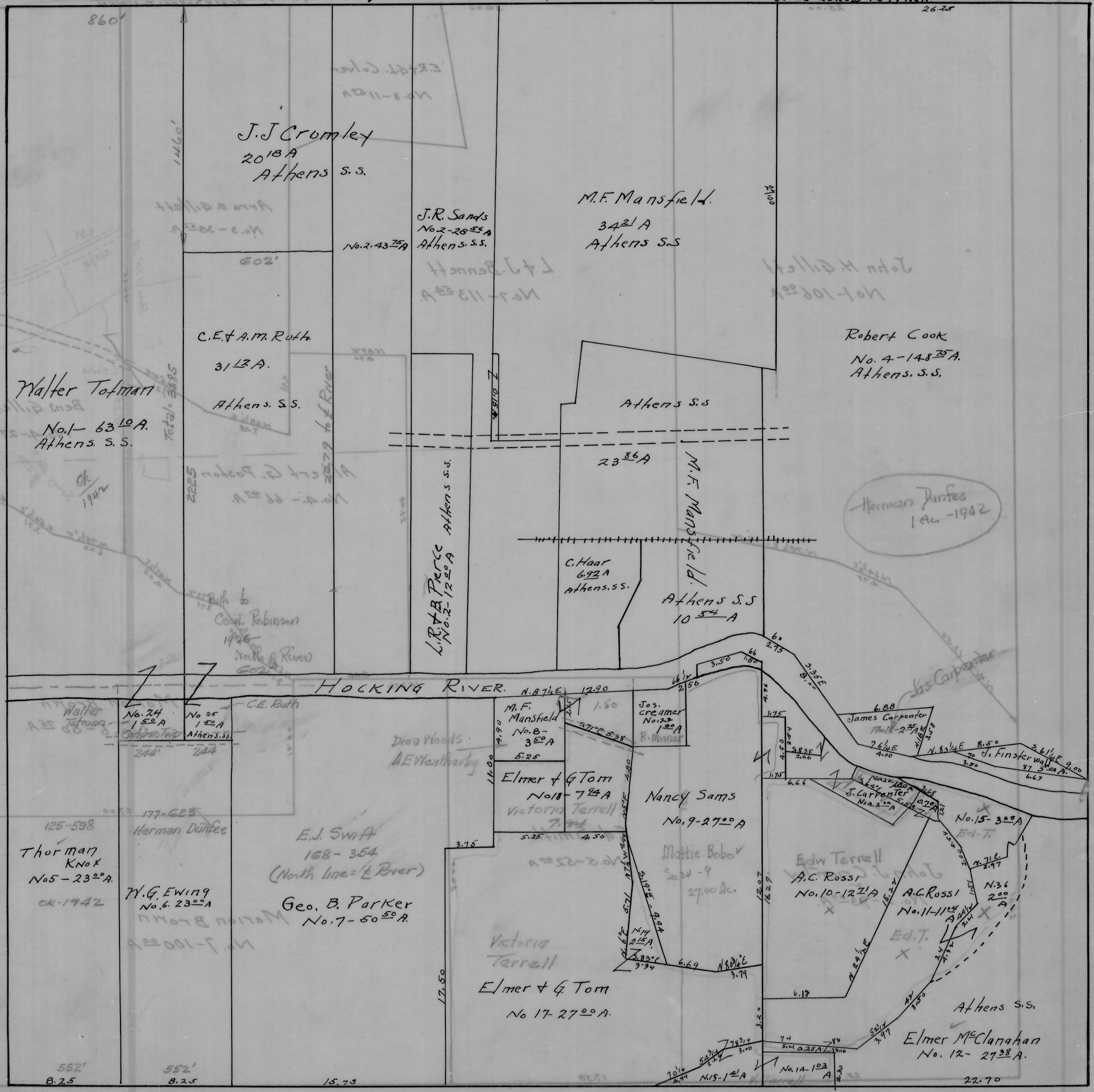


CANAANTWP - SEC. 34 - TOWN, 5 - RANGE 13.

SCALE 20 Feet To 1 Inch



J.J. Cromley  
20<sup>18</sup>A  
Athens S.S.

M.F. Mansfield  
34<sup>21</sup>A  
Athens S.S.

Robert Cook  
No. 4-148<sup>25</sup>A  
Athens S.S.

Walter Tofman  
No. 1-63<sup>10</sup>A  
Athens S.S.

C.E. & A.M. Ruth  
31<sup>13</sup>A  
Athens S.S.

J.R. Sands  
No. 2-28<sup>55</sup>A  
Athens S.S.

L.R. & B. Pierce  
No. 2-12<sup>20</sup>A  
Athens S.S.

Herman Dunfee  
1<sup>AL</sup>-1942

HOCKING RIVER.

No. 24  
1<sup>50</sup>A  
Athens S.S.

Thornton  
Knox  
No. 5-23<sup>00</sup>A  
OK-1942

W.G. Ewing  
No. 6-23<sup>00</sup>A

E.J. Swift  
168-354  
(North line = E River)

Geo. B. Parker  
No. 7-50<sup>50</sup>A

M.F. Mansfield  
No. 8-3<sup>50</sup>A  
5.25

Elmer & G. Tom  
No. 18-7<sup>25</sup>A  
Victoria Terrell

Elmer & G. Tom  
No. 17-27<sup>00</sup>A

Jos. Creamer  
No. 23-1<sup>00</sup>A  
R. Munsar

Nancy Sams  
No. 9-27<sup>00</sup>A

Mattie Bobo  
No. 34-9  
27.00 Ac.

Edw. Terrell  
A.C. Rossi  
No. 10-12<sup>11</sup>A

A.C. Rossi  
No. 11-11<sup>15</sup>A  
Ed. T.

Elmer McClanahan  
No. 12-27<sup>38</sup>A