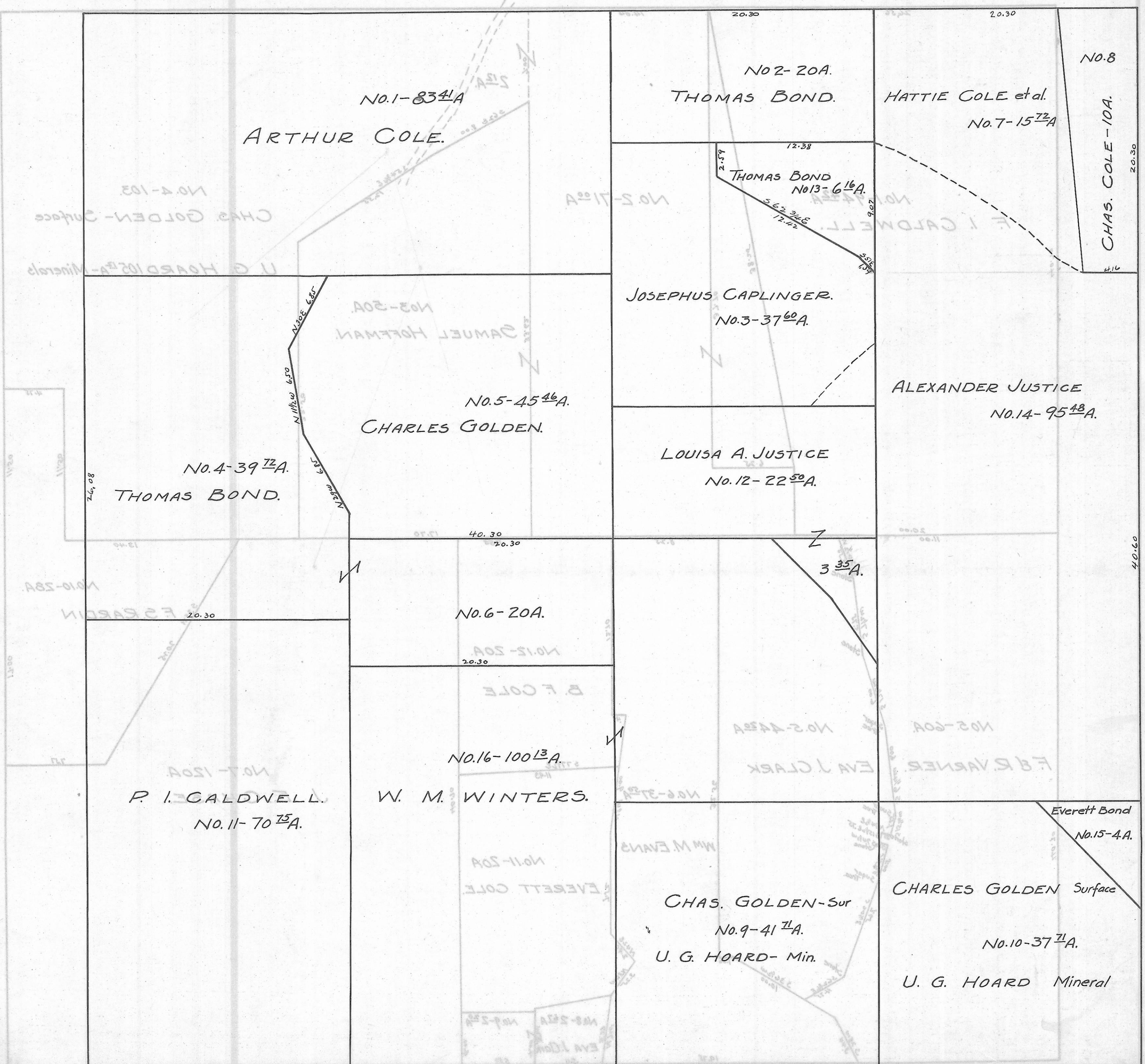


CARTHAGE TWP. — SEC. 4 — TOWN 5 — RANGE 12.

Scale 20 Rods To 1 Inch



NO. 1-834A  
ARTHUR COLE.

NO. 2-20A.  
THOMAS BOND.

HATTIE COLE et al.  
No. 7-15<sup>72</sup>A

NO. 8

CHAS. COLE - 10A.

THOMAS BOND  
No. 13-6<sup>16</sup>A.

JOSEPHUS CAPLINGER.  
No. 3-37<sup>60</sup>A.

ALEXANDER JUSTICE  
No. 14-95<sup>48</sup>A.

NO. 5-45<sup>46</sup>A.  
CHARLES GOLDEN.

LOUISA A. JUSTICE  
No. 12-22<sup>50</sup>A.

NO. 4-39<sup>72</sup>A.  
THOMAS BOND.

3<sup>35</sup>A.

NO. 6-20A.

NO. 16-1001<sup>3</sup>A.

W. M. WINTERS.

P. I. CALDWELL.  
No. 11-70<sup>75</sup>A.

Everett Bond  
No. 15-4A.

CHAS. GOLDEN - Sur  
No. 9-41<sup>74</sup>A.  
U. G. HOARD - Min.

CHARLES GOLDEN Surface  
No. 10-37<sup>74</sup>A.

U. G. HOARD Mineral