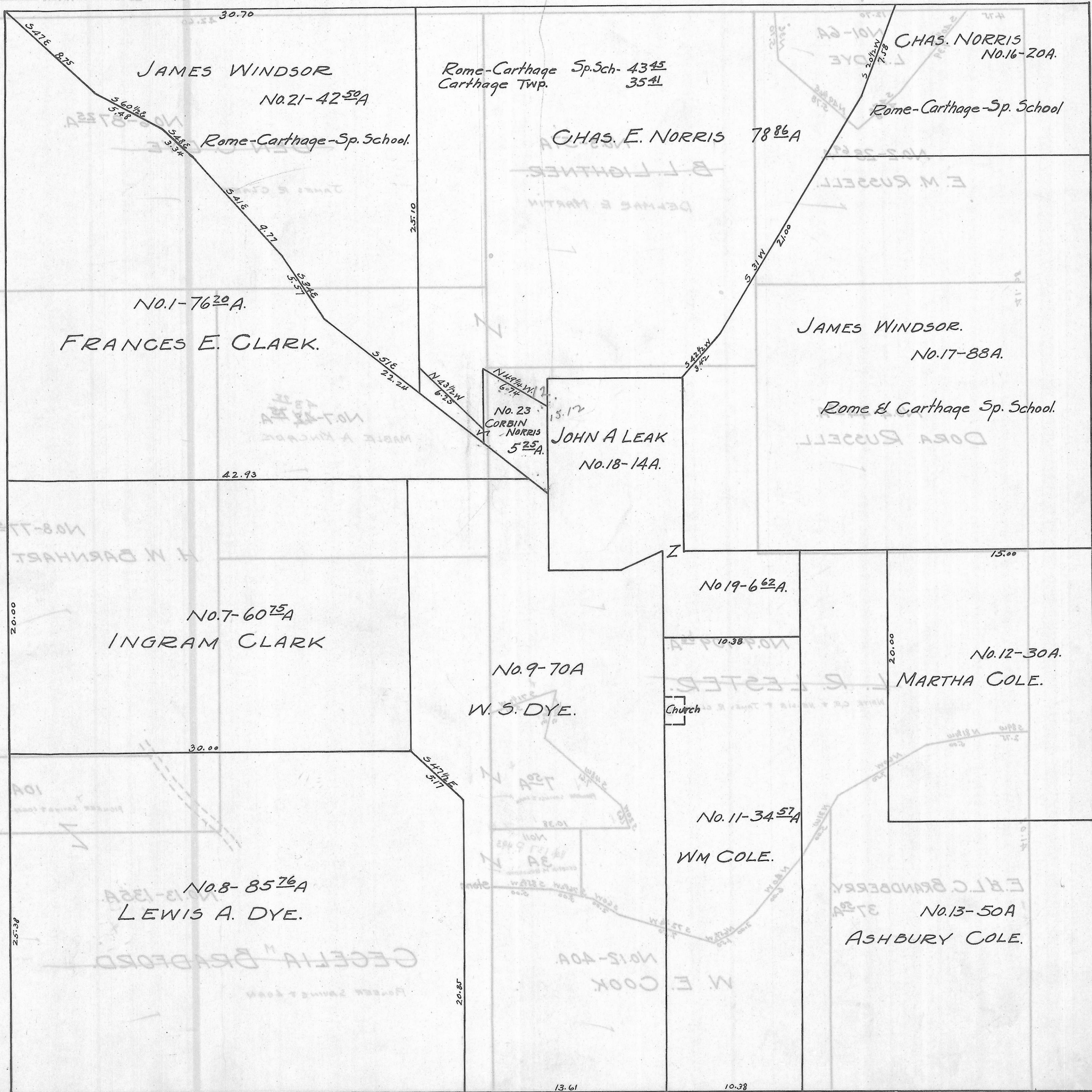


CARTHAGE TWP. SEC. 12 TOWN 5 RANGE 12.

Scale 20 Rods To 1 Inch



JAMES WINDSOR
No. 21-42⁵⁰A

Rome-Carthage Sp. Sch. 4345
Carthage Twp. 3541

CHAS. NORRIS
No. 16-20A.

Rome-Carthage-Sp. School.

CHAS. E. NORRIS 7886A

Rome-Carthage-Sp. School

No. 1-76²⁰A.

FRANCES E. CLARK.

JAMES WINDSOR.
No. 17-88A.

No. 23
CORBIN
NORRIS
525A.

JOHN A LEAK
No. 18-14A.

Rome & Carthage Sp. School.

No. 7-60⁷⁵A
INGRAM CLARK

No. 19-6⁶²A.

No. 9-70A
W. S. DYE.

Church

No. 12-30A.
MARTHA COLE.

No. 8-85⁷⁶A
LEWIS A. DYE.

No. 11-34⁵⁷A
WM COLE.

No. 13-50A
ASHBURY COLE.

13.61

10.38