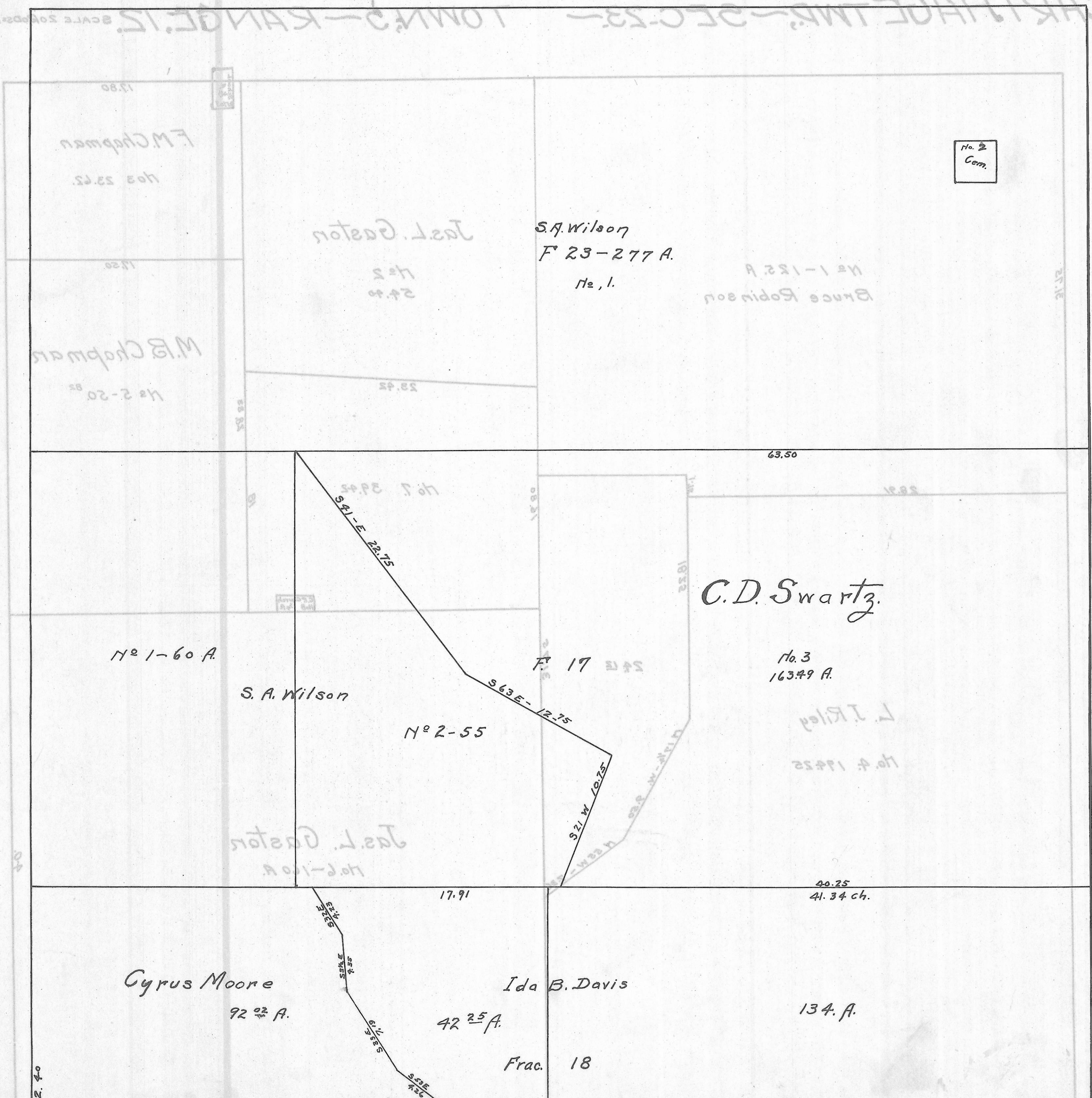


CARTHAGE TWP., Frac. 12, 18, 23. SEC. 21 & 22 - TOWN 5 - RANGE 12

SCALE 20 RODS = 1 in.



No. 2
Cem.

S.A. Wilson
F 23-277 A.
No. 1.

No. 1-125 A
Bruce Robinson

F.M. Chapman
Nos 23 & 24

M.B. Chapman
No 2-20

J.L. Gaston
No 2
24.40

C.D. Swartz

No. 3
163.49 A.

No. 1-60 A
S. A. Wilson

No. 2-55

F 17

J.L. Gaston
No. 1-100 A

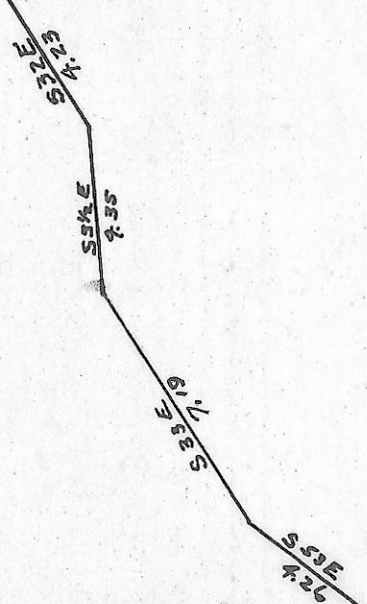
Ida B. Davis

42 25 A.

Frac. 18

Cyrus Moore
92 02 A.

134. A.



32.40