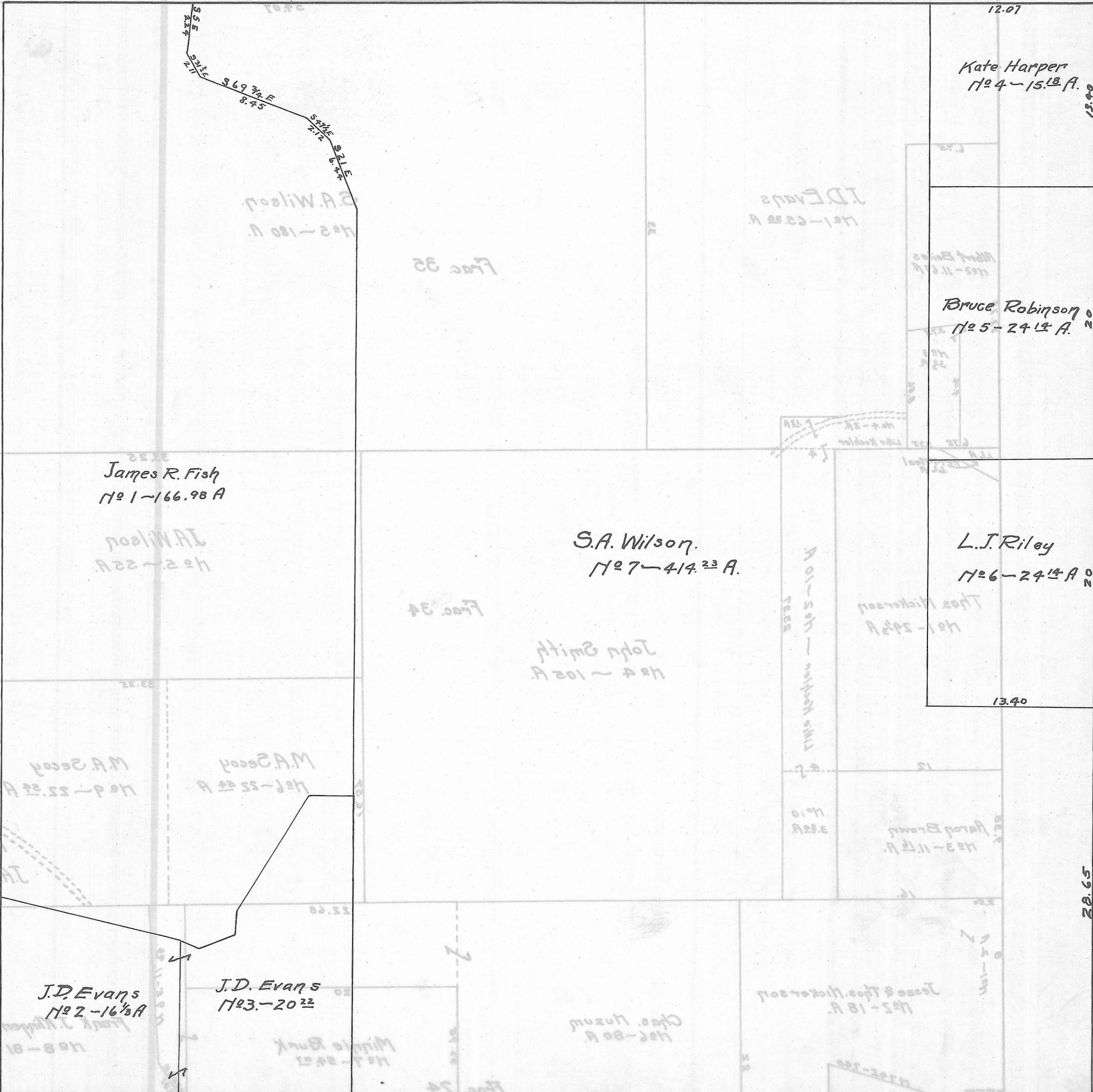


CARTHAGE TWP. - SEC. 29. - TOWN, 5 - RANGE, 12. SCALE - 20 RODS = 1 IN.



Kate Harper
No. 4 - 15.18 A.

Bruce Robinson
No. 5 - 24.14 A.

James R. Fish
No. 1 - 166.98 A.

S.A. Wilson.
No. 7 - 414.23 A.

L.J. Riley
No. 6 - 24.14 A.

J.D. Evans
No. 2 - 16 1/2 A.

J.D. Evans
No. 3 - 20.22 A.

Jesse & Thos. Hickersoy
No. 18 A.

12.07

13.40

13.40

20

20

20.65