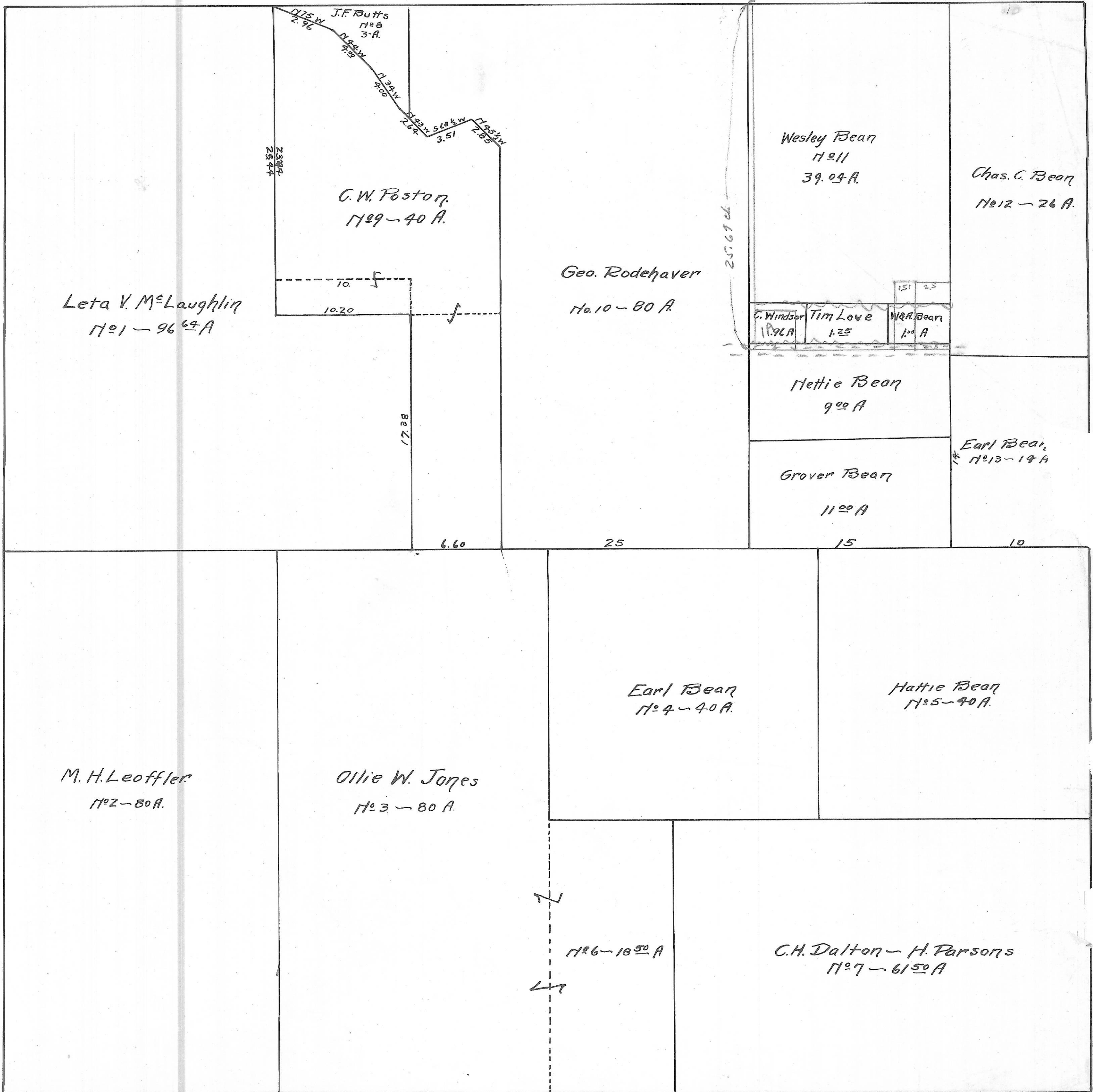


CARTHAGE TWP. - SEC. 36. - TOWN, 5 - RANGE, 12

SCALE 20 RODS = 1 IN.



Leta V. McLaughlin  
No. 1 - 96.64 A

J.F. Butts  
No. 8  
3-A  
N 75° W 2.76  
N 85° W 7.32  
N 24° W 4.00  
S 123° 56' 30" W 2.64  
S 68° 30' W 3.51  
N 65° 24' W 2.85

C.W. Poston  
No. 8 - 40 A

Geo. Rodehaver  
No. 10 - 80 A

Wesley Bear  
No. 11  
39.04 A

Chas. C. Bear  
No. 12 - 26 A

C. Windsor No. 96 A	Tim Love 1.25	W.R. Bear 1.00 A
------------------------	------------------	---------------------

Nettie Bear  
9.00 A

Grover Bear  
11.00 A

Earl Bear  
No. 13 - 14 A

Earl Bear  
No. 4 - 40 A

Mattie Bear  
No. 5 - 40 A

M. H. Leoffler  
No. 2 - 80 A

Ollie W. Jones  
No. 3 - 80 A

No. 6 - 18.50 A

C.H. Dalton - H. Parsons  
No. 7 - 61.50 A