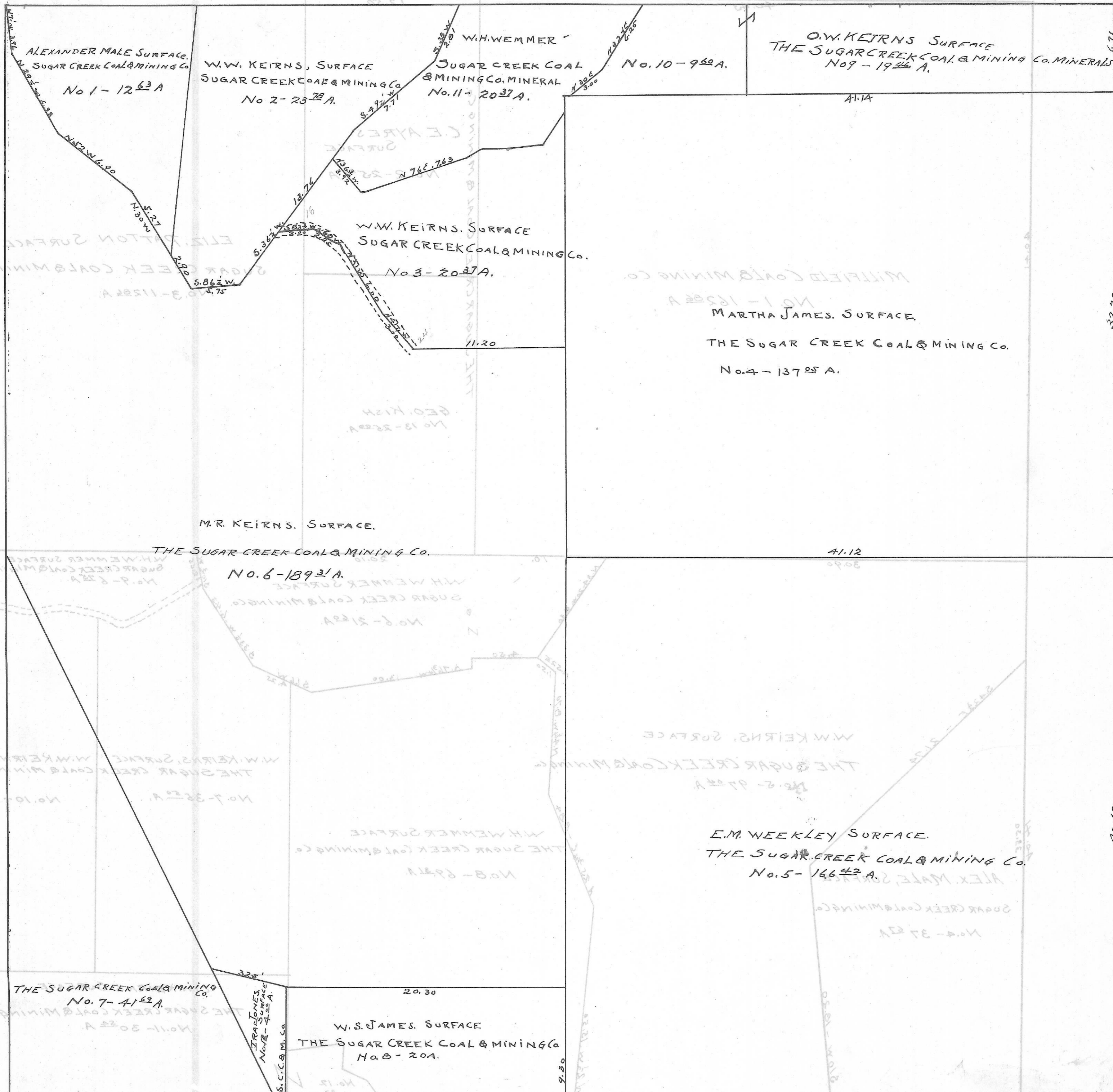


DOVER TWP. - SEC. 3 - TOWN, 10 - RANGE, 14. 20 Rod = 1 in



ALEXANDER MALE SURFACE.
SUGAR CREEK COAL & MINING Co.
No 1 - 12⁶³ A

W.W. KEIRNS, SURFACE
SUGAR CREEK COAL & MINING Co.
No 2 - 23⁷⁰ A.

W.H. WEMMER
SUGAR CREEK COAL & MINING Co. MINERAL
No. 11 - 20³⁷ A.

O.W. KEIRNS SURFACE
THE SUGAR CREEK COAL & MINING Co. MINERALS
No 9 - 19⁴⁶ A.

W.W. KEIRNS. SURFACE
SUGAR CREEK COAL & MINING Co.
No 3 - 20³⁷ A.

MARTHA JAMES. SURFACE.
THE SUGAR CREEK COAL & MINING Co.
No. 4 - 137⁰⁵ A.

M.R. KEIRNS. SURFACE.
THE SUGAR CREEK COAL & MINING Co.
No. 6 - 189³¹ A.

E.M. WEEKLEY SURFACE.
THE SUGAR CREEK COAL & MINING Co.
No. 5 - 166⁴² A.

THE SUGAR CREEK COAL & MINING Co.
No. 7 - 41⁶² A.

W.S. JAMES. SURFACE
THE SUGAR CREEK COAL & MINING Co.
No. 8 - 20A.

IRRA JAMES
SURFACE
No. 8 - 20A