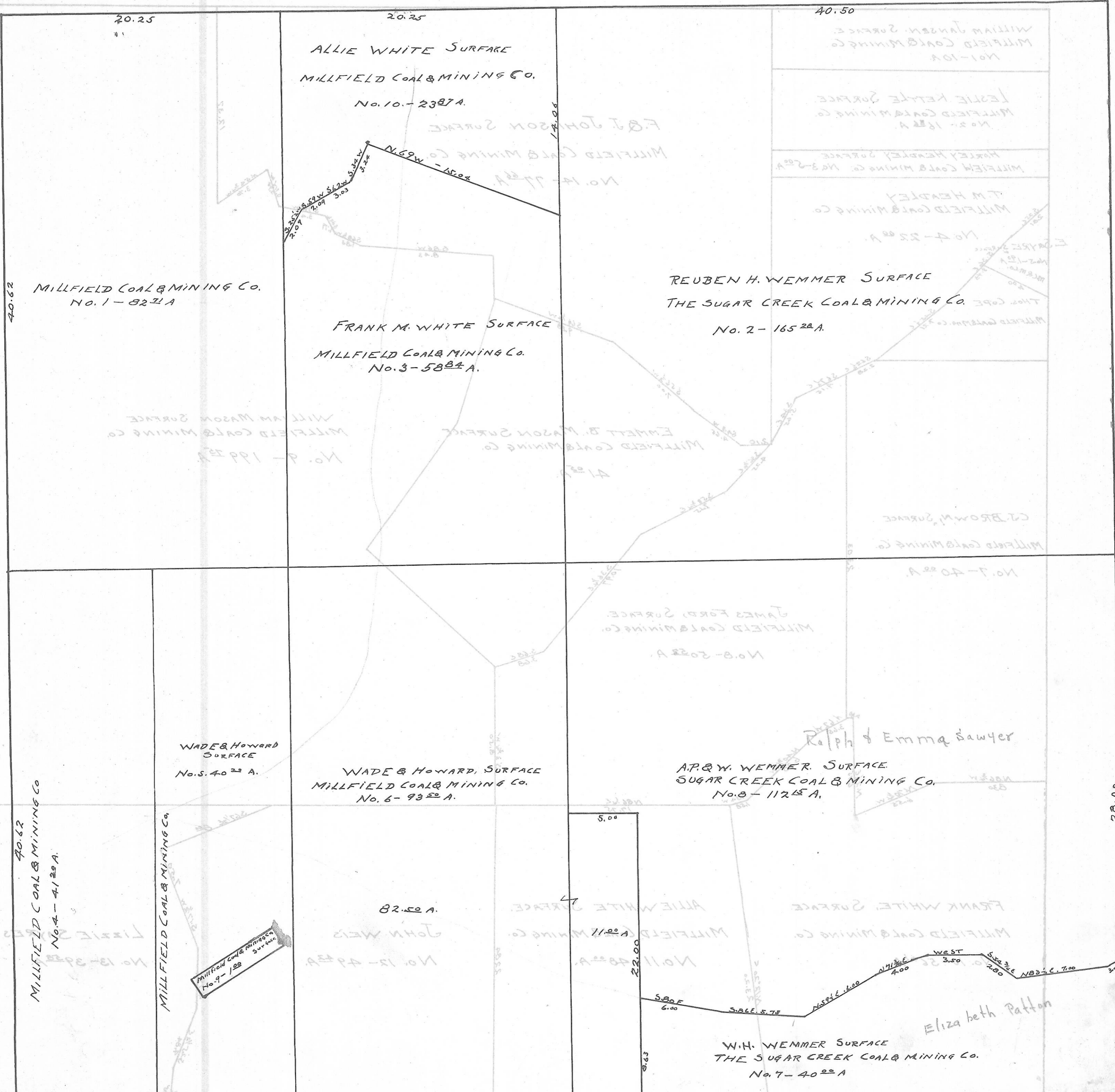


DOVER TWP. ~ SEC. 5 ~ TOWN, 10 - RANGE, 14.

20 Rods = 1" N



MILLFIELD COAL & MINING CO. SURFACE No. 9 - 1222 A.

Eliza beth Patton

W.H. WEMMER SURFACE THE SUGAR CREEK COAL & MINING CO. No. 7 - 4022 A.

AP & W. WEMMER SURFACE SUGAR CREEK COAL & MINING CO. No. 8 - 11225 A.

WADE & HOWARD SURFACE MILLFIELD COAL & MINING CO. No. 6 - 9322 A.

WADE & HOWARD SURFACE No. 5 - 4022 A.

REUBEN H. WEMMER SURFACE THE SUGAR CREEK COAL & MINING CO. No. 2 - 16528 A.

FRANK M. WHITE SURFACE MILLFIELD COAL & MINING CO. No. 3 - 5884 A.

MILLFIELD COAL & MINING CO. No. 1 - 8222 A.

ALLIE WHITE SURFACE MILLFIELD COAL & MINING CO. No. 10 - 2387 A.